

PLAN PREPARATION
DESIGNER MR, RW



DISTRICT	COUNTY	TOWNSHIP	BOROUGH	ROUTE	SECTION	TOTAL SHEETS
6-0	MONTGOMERY	ABINGTON				16

TRAFFIC PLANNING AND DESIGN, INC.
DRAWINGS
FOR
CONSTRUCTION
OF

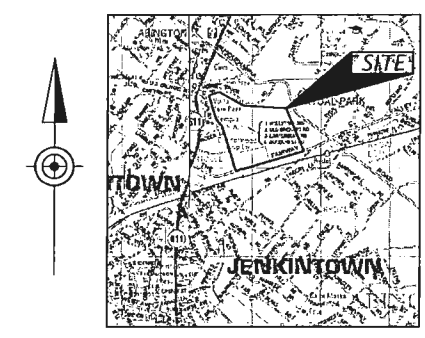
REDSTONE AT BAEDERWOOD

TPD JOB # LJBR.00020

IN MONTGOMERY COUNTY

FROM STA 104+50.00 TO STA 120+00.00 LENGTH 1550 FT 0.2936 MI

TITLE SHEET	SHEET 1
EXISTING CONDITIONS PLAN	SHEET 2
GENERAL NOTES	SHEET 3
PROPOSED CONDITIONS PLAN	SHEET 4
CONSTRUCTION PLAN	SHEETS 5-6
GEOMETRY PLAN	SHEETS 7-8
ELEVATION AND DRAINAGE PLAN	SHEETS 9-10
PAVEMENT MARKING AND SIGNING PLAN	SHEETS 11-12
PAVEMENT MARKING STANDARDS	SHEETS 13-14
TRAFFIC CONTROL STANDARDS	SHEETS 15-16
ALSO INCLUDED:	
ADA RAMP PLANS	12 SHEETS
TRAFFIC SIGNAL PLANS	3 SHEETS



Copyright ADC The Map People
Permitted Use No 21009261

LOCATION MAP

0 2000 4000 FEET



PENNSYLVANIA ACT 287 (1974) AS AMENDED BY ACT 121 (2008) REQUIRES NOTIFICATION BY EXCAVATORS, DESIGNERS, OR ANY PERSON PREPARING TO DISTURB THE EARTH'S SURFACE ANYWHERE IN THE COMMONWEALTH.
PA ONE-CALL SERIAL #20193222869 & #20193222906 HAVE BEEN ASSIGNED TO THIS PROJECT ON 11/18/19.
ENTRIES FROM ACT 121 LIST UPDATED BY ENGINEER.

PREPARED BY:
TRAFFIC PLANNING &
DESIGN, INC.
2500 E. HIGH STREET
SUITE 650
POTTSTOWN, PA 19464

Sean Stanton

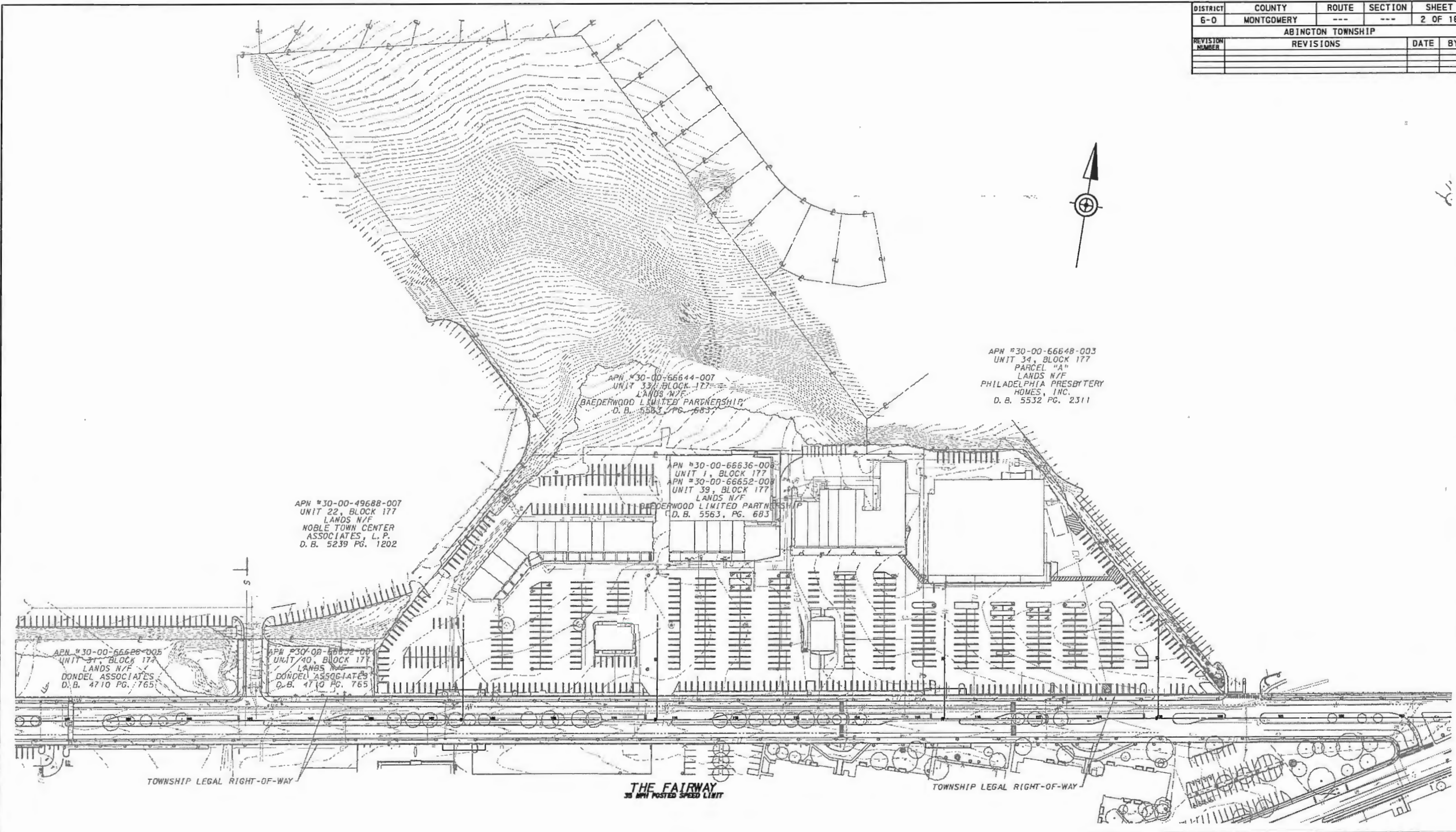
12/19/19

REVISION NUMBER	REVISIONS	DATE	BY

DATE

J:\LJBR\00020 (Redstone at Baederwood)\CAD\DWG\DWG\11118 sheet1.dgn
 12/18/2019 5:52:55 PM 1125
 pro.ljt

DISTRICT	COUNTY	ROUTE	SECTION	SHEET
6-0	MONTGOMERY	---	---	2 OF 16
ABINGTON TOWNSHIP				
REVISION NUMBER	REVISIONS	DATE	BY	



J:\JAN\00020 - Resubmittal of Baederwood CADDP for the 1st 1001-001
 12/18/2019 4:57:52 PM 11.74.2335 PG.11

0 75 150 FEET

SEAN ANDREW STANTON
ENGINEER
No. 00778
PENNSYLVANIA

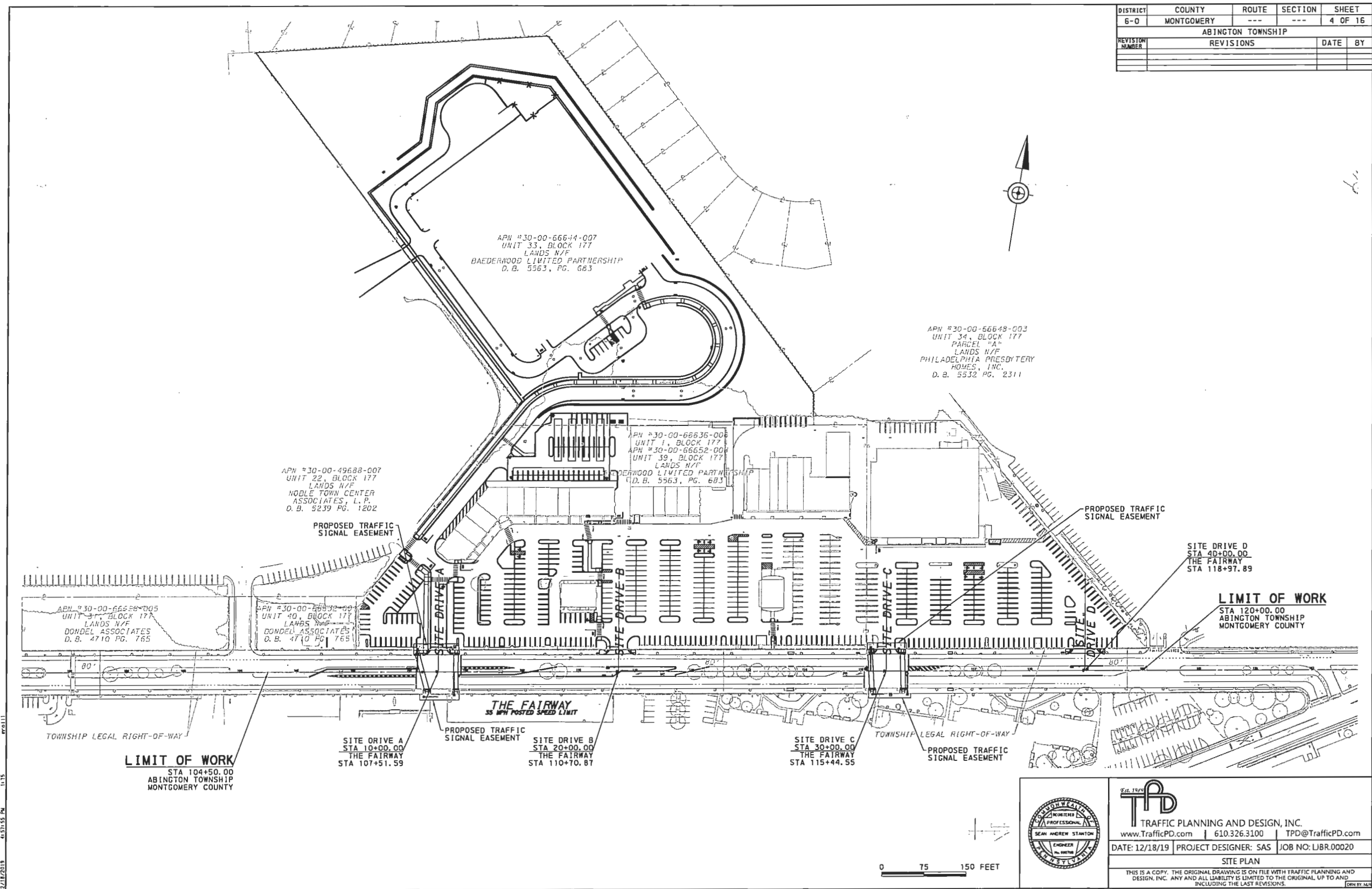
TPD
TRAFFIC PLANNING AND DESIGN, INC.
www.TrafficPD.com | 610.326.3100 | TPD@TrafficPD.com

DATE: 12/18/19 PROJECT DESIGNER: SAS JOB NO: LBR.00020

EXISTING PLAN

THIS IS A COPY. THE ORIGINAL DRAWING IS ON FILE WITH TRAFFIC PLANNING AND DESIGN, INC. ANY AND ALL LIABILITY IS LIMITED TO THE ORIGINAL, UP TO AND INCLUDING THE LAST REVISIONS. (REV. BY: SAS)

DISTRICT	COUNTY	ROUTE	SECTION	SHEET
6-0	MONTGOMERY	---	---	4 OF 16
ABINGTON TOWNSHIP				
REVISION NUMBER	REVISIONS	DATE	BY	



J:\ALM\00020\Fairstone_01_Baederwood\CAD\TPD\rev31.tbl.dwg
 12/18/2019 4:57:55 PM 11.15
 PROJ11

TPD
TRAFFIC PLANNING AND DESIGN, INC.
www.TrafficPD.com | 610.326.3100 | TPD@TrafficPD.com

DATE: 12/18/19 PROJECT DESIGNER: SAS JOB NO: LBR.00020

SITE PLAN

THIS IS A COPY. THE ORIGINAL DRAWING IS ON FILE WITH TRAFFIC PLANNING AND DESIGN, INC. ANY AND ALL LIABILITY IS LIMITED TO THE ORIGINAL UP TO AND INCLUDING THE LAST REVISIONS.