

Abington Township

Montgomery County, Pennsylvania

Zoning

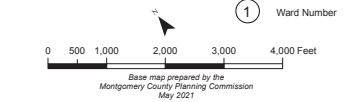
- RC Recreation/Conservation
- R1 Low Density Residential
- R2 Low-Medium Density Residential
- R3 Medium Density Residential
- R4 High Density Residential
- AO Apartment Office
- SNR Senior Neighborhood Residential
- BC Business Center
- BC Noble Triangle
- MS-H Main Street High Intensity Density
- MS-L Main Street Low Intensity Density
- MS-VC Village Center
- CS Community Service
- SI-G Suburban Industrial Glenside
- SI-W Suburban Industrial Willow Grove

Zoning boundaries as of April 6, 2022

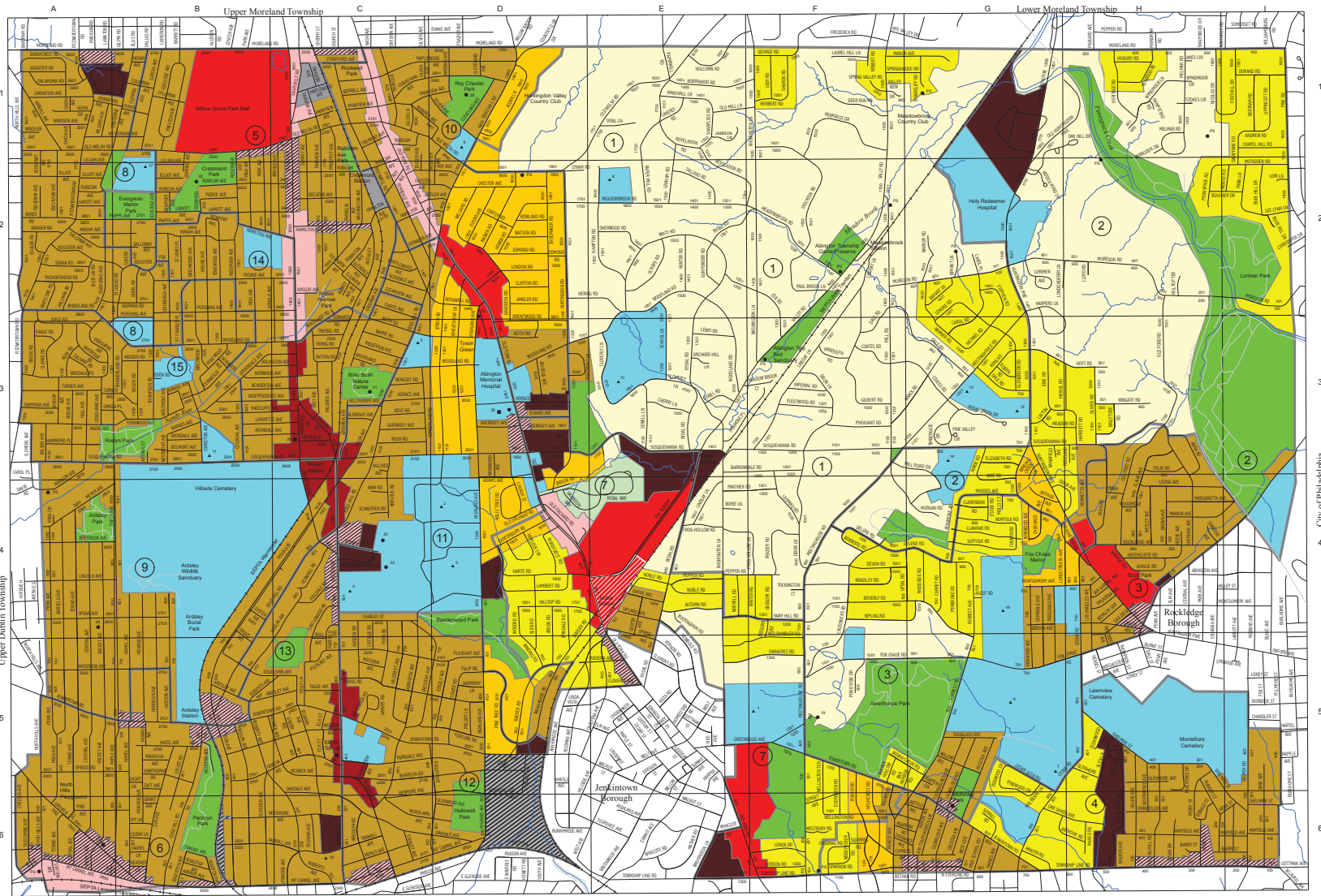
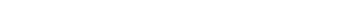
- #### Schools & Colleges
1. Abington Friends School (Private)
 2. Abington Junior High School
 3. Abington Senior High School
 4. Copper Bench Elementary School
 5. Highland Elementary School
 6. Manor College
 7. McKinley Elementary School
 8. Meadowbrook School (Private)
 9. Overlook Elementary School
 10. Penn State Abington
 11. Roslyn Elementary School
 12. Rydal Elementary School East
 13. Rydal Elementary School West
 14. St Hilary of Poitiers School (Private)
 15. St Joseph the Protector (Private)
 16. St Basil Academy (Private)
 17. Willow Hill Elementary School

- #### Public Buildings
18. Abington Township Administration & Police Office
 19. Avertorpe Manor
 20. Ardsley Community Center
 21. Briar Bush Nature Center
 22. Crestmont Park Shelter
 23. Fire Training Facility & Police Annex
 24. Public Works Yard & Garage
 25. Roy Chester Park "The Barn"
 - PS. Sewage Pumping Stations (various locations)

- #### Fire Stations
26. Abington Fire Co D3
 27. Edge Hill Fire Co A6
 28. McKinley Fire Co G6
 29. Roslyn Fire Co C3
 30. Weldon Fire Co C5



Base map prepared by the Montgomery County Planning Commission May 2021



Springfield Township										Cheltenham Township										Lower Merion Township										Upper Merion Township																																																																																																																																																																																																																																																																																																																																																																																																																																																																																																																																																																																																																																							
A	B	C	D	E	F	G	H	I	J	K	L	M	N	O	P	Q	R	S	T	U	V	W	X	Y	Z	AA	AB	AC	AD	AE	AF	AG	AH	AI	AJ	AK	AL	AM	AN	AO	AP	AQ	AR	AS	AT	AU	AV	AW	AX	AY	AZ	BA	BB	BC	BD	BE	BF	BG	BH	BI	BJ	BK	BL	BM	BN	BO	BP	BQ	BR	BS	BT	BU	BV	BW	BX	BY	BZ	CA	CB	CC	CD	CE	CF	CG	CH	CI	CJ	CK	CL	CM	CN	CO	CP	CQ	CR	CS	CT	CU	CV	CW	CX	CY	CZ	DA	DB	DC	DD	DE	DF	DG	DH	DI	DJ	DK	DL	DM	DN	DO	DP	DQ	DR	DS	DT	DU	DV	DW	DX	DY	DZ	EA	EB	EC	ED	EE	EF	EG	EH	EI	EJ	EK	EL	EM	EN	EO	EP	EQ	ER	ES	ET	EU	EV	EW	EX	EY	EZ	FA	FB	FC	FD	FE	FF	FG	FH	FI	FJ	FK	FL	FM	FN	FO	FP	FQ	FR	FS	FT	FU	FV	FW	FX	FY	FZ	GA	GB	GC	GD	GE	GF	GG	GH	GI	GJ	GK	GL	GM	GN	GO	GP	GQ	GR	GS	GT	GU	GV	GW	GX	GY	GZ	HA	HB	HC	HD	HE	HF	HG	HH	HI	HJ	HK	HL	HM	HN	HO	HP	HQ	HR	HS	HT	HU	HV	HW	HX	HY	HZ	IA	IB	IC	ID	IE	IF	IG	IH	II	IJ	IK	IL	IM	IN	IO	IP	IQ	IR	IS	IT	IU	IV	IW	IX	IY	IZ	JA	JB	JC	JD	JE	JF	JG	JH	JI	IJ	JK	KL	KM	KN	KO	KP	KQ	KR	KS	KT	KU	KV	KW	KX	KY	KZ	LA	LB	LC	LD	LE	LF	LG	LH	LI	LJ	LK	LM	LN	LO	LP	LQ	LR	LS	LT	LU	LV	LW	LX	LY	LZ	MA	MB	MC	MD	ME	MF	MG	MH	MI	MJ	MK	ML	MM	MN	MO	MP	MQ	MR	MS	MT	MU	MV	MW	MX	MY	MZ	NA	NB	NC	ND	NE	NF	NG	NH	NI	NJ	NK	NL	NM	NN	NO	NP	NQ	NR	NS	NT	NU	NV	NW	NX	NY	NZ	OA	OB	OC	OD	OE	OF	OG	OH	OI	OJ	OK	OL	OM	ON	OO	OP	OQ	OR	OS	OT	OU	OV	OW	OX	OY	OZ	PA	PB	PC	PD	PE	PF	PG	PH	PI	PJ	PK	PL	PM	PN	PO	PP	PQ	PR	PS	PT	PU	PV	PW	PX	PY	PZ	QA	QB	QC	QD	QE	QF	QG	QH	QI	QJ	QK	QL	QM	QN	QO	QP	QQ	QR	QS	QT	QU	QV	QW	QX	QY	QZ	RA	RB	RC	RD	RE	RF	RG	RH	RI	RJ	RK	RL	RM	RN	RO	RP	RQ	RR	RS	RT	RU	RV	RW	RX	RY	RZ	SA	SB	SC	SD	SE	SF	SG	SH	SI	SJ	SK	SL	SM	SN	SO	SP	SQ	SR	SS	ST	SU	SV	SW	SX	SY	SZ	TA	TB	TC	TD	TE	TF	TG	TH	TI	TJ	TK	TL	TM	TN	TO	TP	TQ	TR	TS	TU	TV	TW	TX	TY	TZ	UA	UB	UC	UD	UE	UF	UG	UH	UI	UJ	UK	UL	UM	UN	UO	UP	UQ	UR	US	UT	UU	UV	UW	UX	UY	UZ	VA	VB	VC	VD	VE	VF	VG	VH	VI	VJ	VK	VL	VM	VN	VO	VP	VQ	VR	VS	VT	VU	VV	VW	VX	VY	VZ	WA	WB	WC	WD	WE	WF	WG	WH	WI	WJ	WK	WL	WM	WN	WO	WP	WQ	WR	WS	WT	WU	WV	WW	WX	WY	WZ	XA	XB	XC	XD	XE	XF	YG	YH	YI	YJ	YK	YL	YM	YN	YO	YP	YQ	YR	YS	YT	YU	YV	YW	YZ	ZA	ZB	ZC	ZD	ZE	ZF	ZG	ZH	ZI	ZJ	ZK	ZL	ZM	ZN	ZO	ZP	ZQ	ZR	ZS	ZT	ZU	ZV	ZW	ZX	ZY	ZZ

Abington Township

Montgomery County, Pennsylvania

Zoning

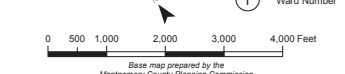
- RC Recreation/Conservation
- R1 Low Density Residential
- R2 Low-Medium Density Residential
- R3 Medium Density Residential
- R4 High Density Residential
- AO Apartment Office
- SNR Senior Neighborhood Residential
- BC Business Center
- BC Noble Triangle
- MS-H Main Street High Intensity Density
- MS-L Main Street Low Intensity Density
- MS-VC Village Center
- CS Community Service
- SI-G Suburban Industrial Glenside
- SI-W Suburban Industrial Willow Grove

Zoning boundaries as of April 6, 2022

- Schools & Colleges
 - 1. Abington Friends School (Private) F5
 - 2. Abington Junior High School D4
 - 3. Abington Senior High School D4
 - 4. Copper Beach Elementary School C4
 - 5. Highland Elementary School C3
 - 6. Manor College G5
 - 7. McKinley Elementary School G5
 - 8. Meadowbrook School (Private) E2
 - 9. Overlook Elementary School D1
 - 10. Penn State Abington E3
 - 11. Roslyn Elementary School G3
 - 12. Rydal Elementary School East G3
 - 13. Rydal Elementary School West G3
 - 14. St Hilary of Poitiers School (Private) G3
 - 15. St Joseph the Protector (Private) C6
 - 16. St East Academy (Private) C6
 - 17. Willow Hill Elementary School B2

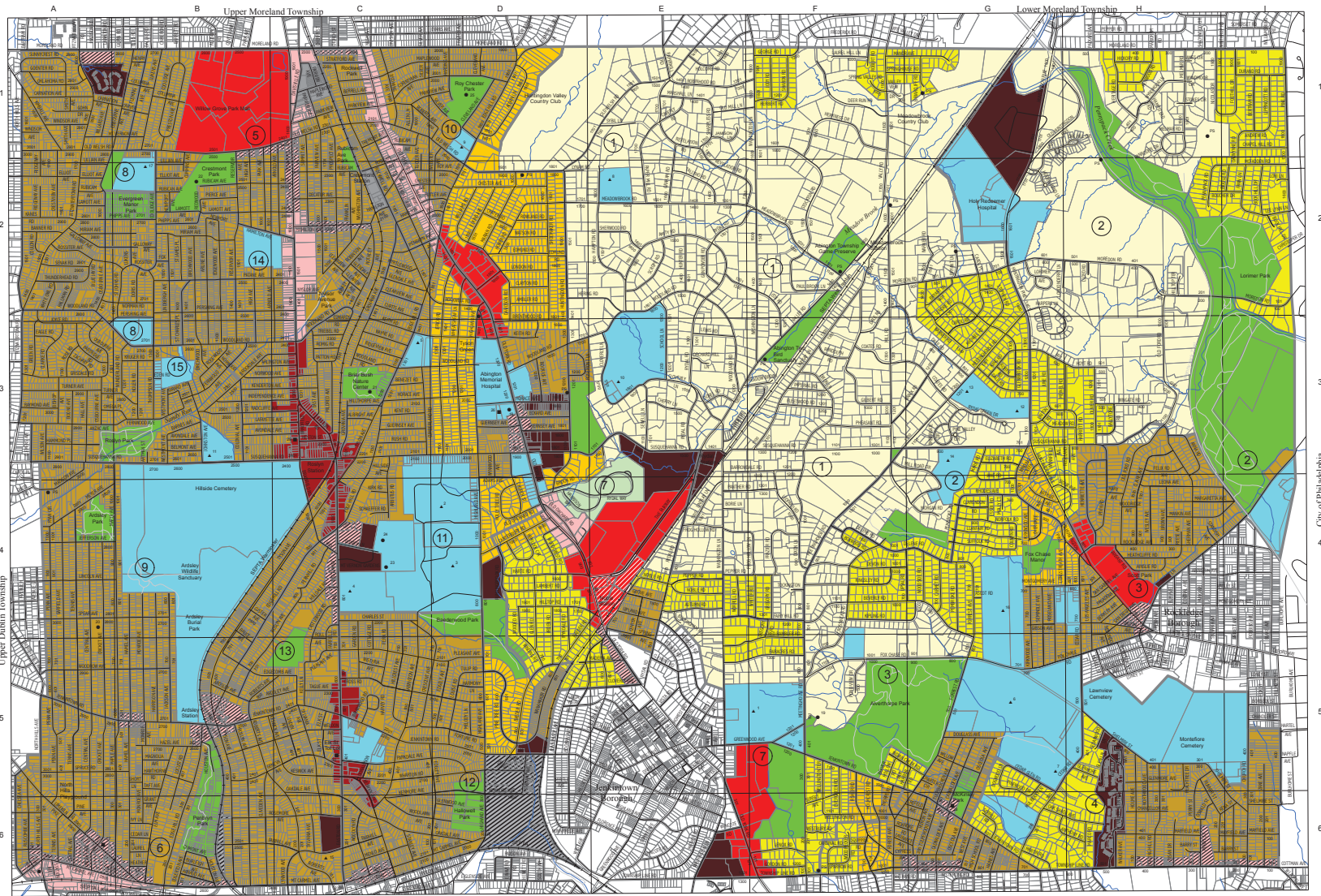
- Public Buildings
 - 18. Abington Township Administration & Police Office D3
 - 19. Avertorpe Manor F5
 - 20. Ardsley Community Center A4
 - 21. Briar Bush Nature Center C3
 - 22. Crestmont Park Shelter B2
 - 23. Fire Training Facility & Police Annex C4
 - 24. Public Works Yard & Garage C4
 - 25. Roy Chester Park "The Barn" D1
 - PS. Sewage Pumping Stations (various locations) D1

- Fire Stations
 - 26. Abington Fire Co D3
 - 27. Edge Hill Fire Co A6
 - 28. McKinley Fire Co G6
 - 29. Roslyn Fire Co C3
 - 30. Weldon Fire Co C5



Scale: 0 500 1,000 2,000 3,000 4,000 Feet

Base map prepared by the Montgomery County Planning Commission May 2021



Springfield Township										Cheltenham Township															
A	B	C	D	E	F	G	H	I	J	K	L	M	N	O	P	Q	R	S	T	U	V	W	X	Y	Z
1	2	3	4	5	6	7	8	9	10	11	12	13	14	15	16	17	18	19	20	21	22	23	24	25	26
Abington Ave	Baldwin Rd	Birkenhead Rd	Brookside Ave	Cherry Ln	Cherry Ln	Cherry Ln	Cherry Ln	Cherry Ln	Cherry Ln	Cherry Ln	Cherry Ln	Cherry Ln	Cherry Ln	Cherry Ln	Cherry Ln	Cherry Ln	Cherry Ln	Cherry Ln	Cherry Ln	Cherry Ln	Cherry Ln	Cherry Ln	Cherry Ln	Cherry Ln	Cherry Ln