

# Environmental Management and Resilience

## Chapter

## Images

Note: the images in this file will be added to the main document when the separate Word and Power Point documents are merged and converted into one InDesign document.

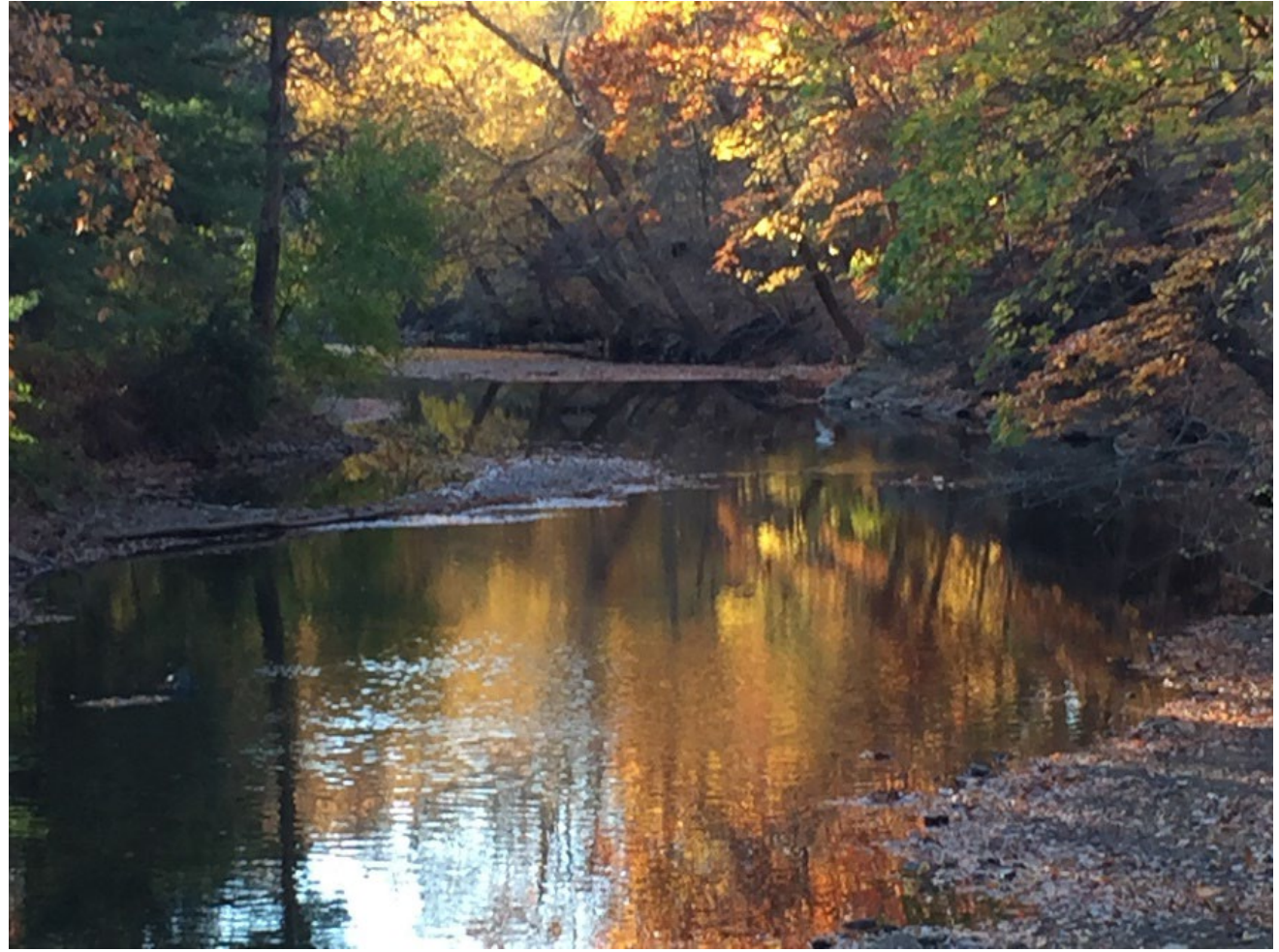


Bat Houses, Ardsley Wildlife Sanctuary

Natural  
Environment  
*Streams and  
Watersheds*



Meadow Brook



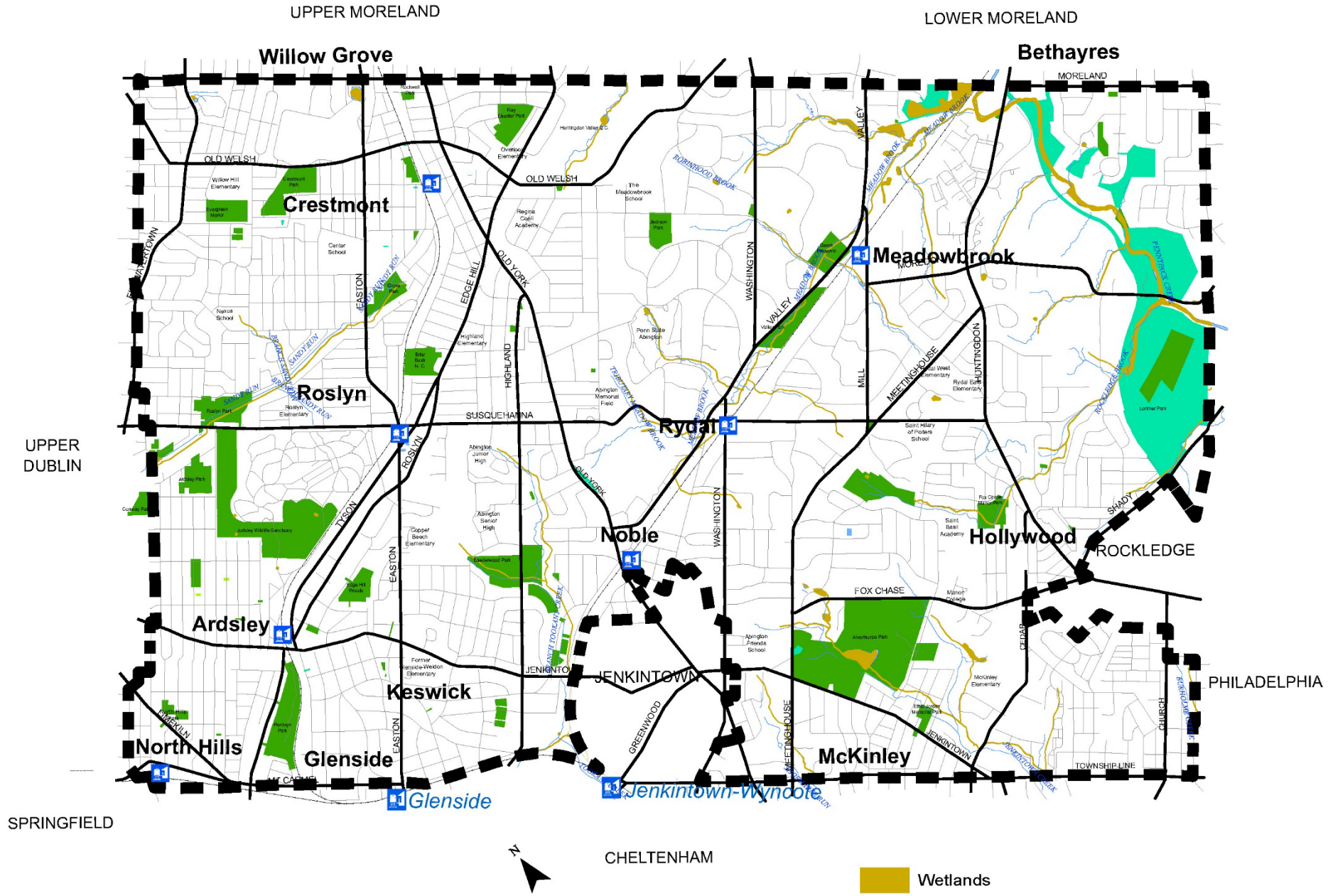
The Pennypack Creek ([Seen Here in Lorimer Park](#)) Drains More Than Half of the Township



# Natural Environment Wetlands

Notes: National Wetlands Inventory: Source: U.S. Department of the Interior, Office of Biological Services for the National Wetlands Inventory.

Note: Wetlands were identified on high altitude aerial photographs based on vegetation, visible hydrology, and geography in accordance with “Classification of Wetlands and Deep-Water Habitats of the United States” Cowardin, et al, 1977.



Natural  
Environment  
*Wetlands*

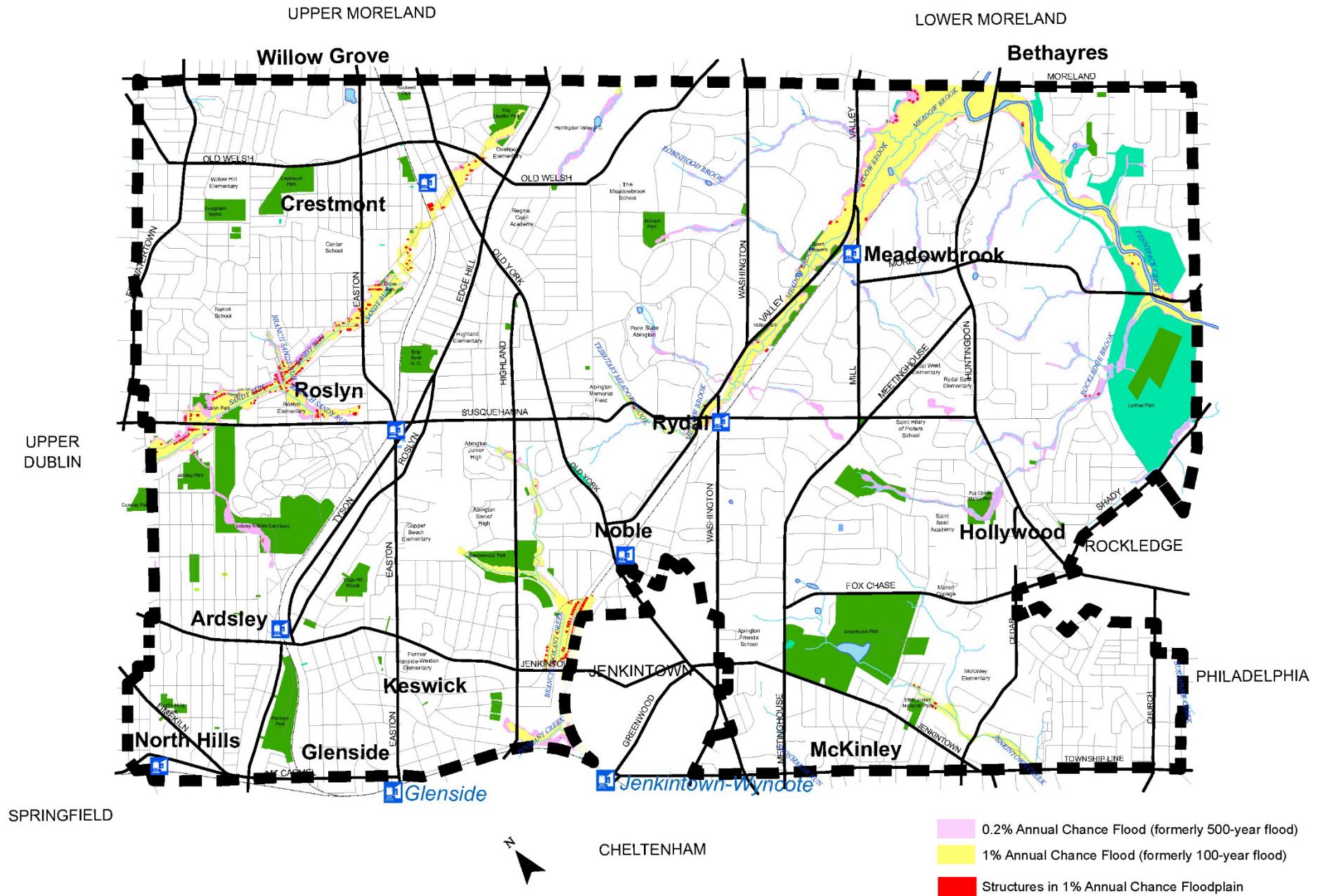


Wetland, Ardsley Wildlife Sanctuary

# Natural Environment Floodplains

Source: Federal Emergency Management Agency, Federal Insurance Administration, Flood Insurance Study for Abington.

Note: This map indicates the approximate location of floodplains in Abington Township. Accurate location may require field survey.



# Natural Environment

## *Riparian Corridors*



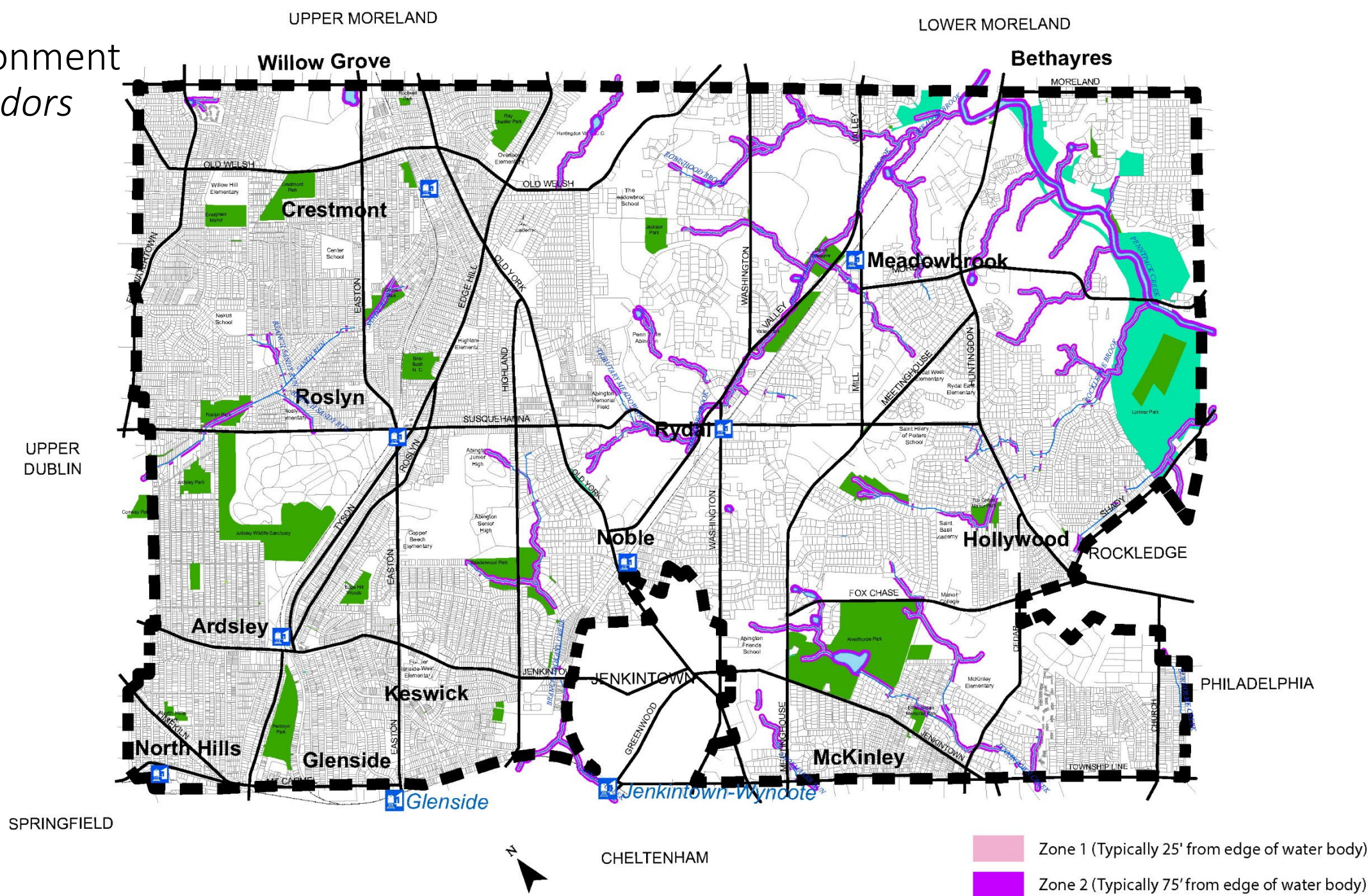
Streamside vegetation in Meadow Brook riparian corridor



In 2014, Abington Friends School and Tookany/Tacony-Frankford Watershed Partnership (TTF) Planted Over 350 Trees and Shrubs in the Riparian Corridor Along the Headwaters of the Jenkintown Creek.

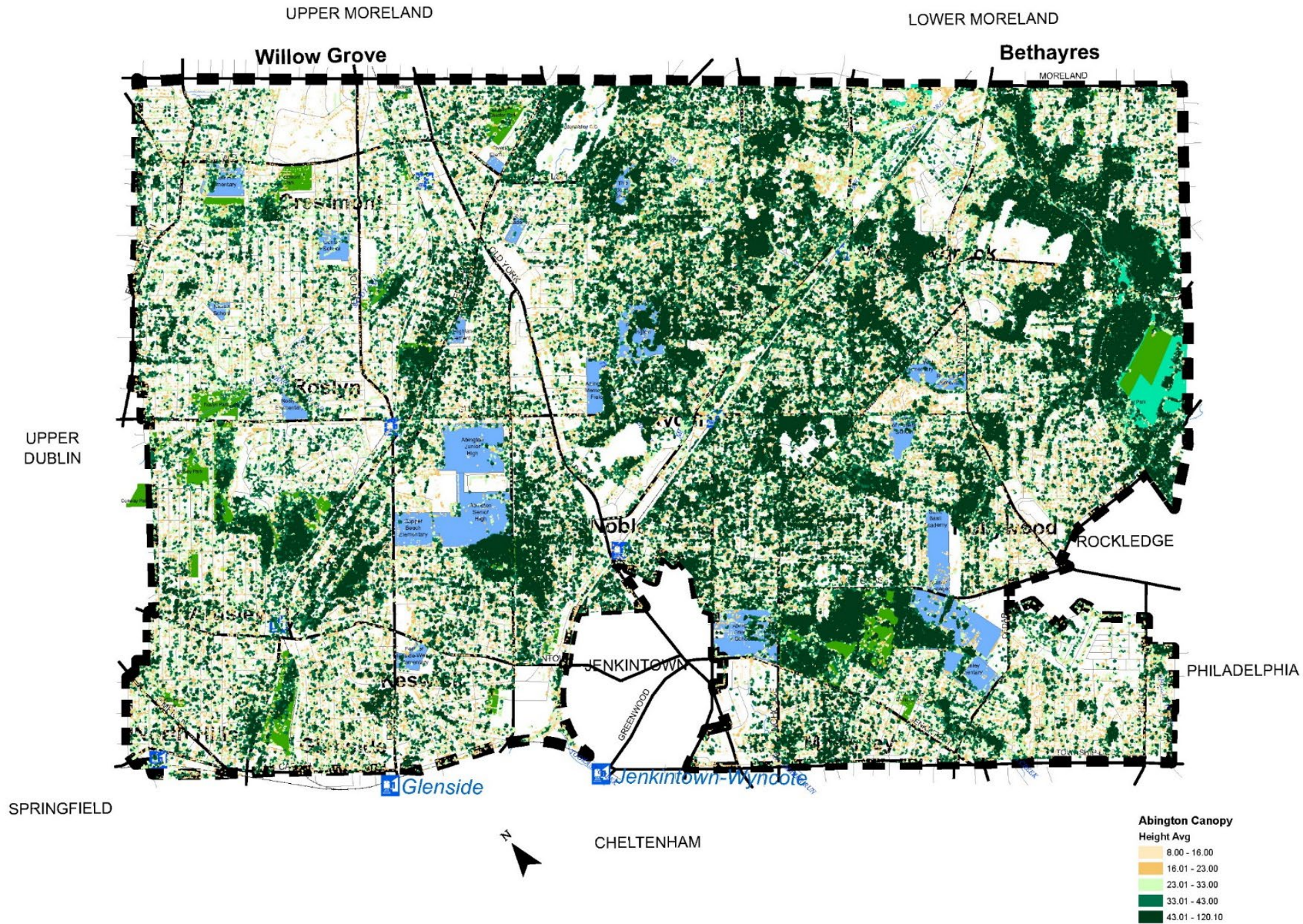
# Natural Environment *Riparian Corridors*

NOTE: this map shows an approximate location of the riparian corridor conservation district. The actual width varies, as explained by the zoning text of the district.





Natural Environment:  
*Tree Canopy*



Natural  
Environment:  
*Tree Canopy*



Trees in Alverthorpe Park

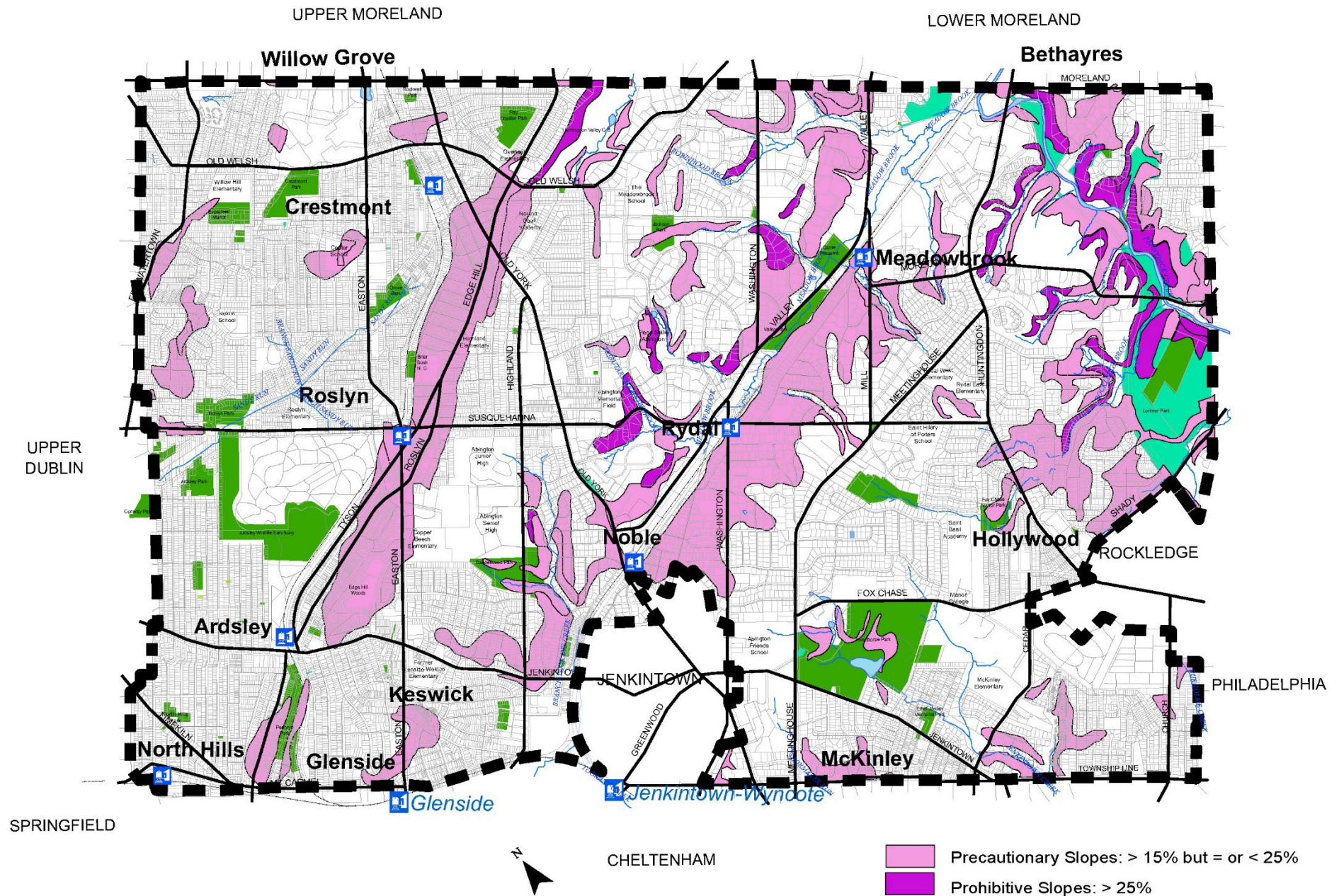


Woods in Ardsley Wildlife Sanctuary

# Natural Environment Steep Slopes

Source: Soil Survey of Montgomery County, U.S. Department of Agriculture, Soil Conservation Service, 2008.

Note: This map indicates the approximate location of slopes greater than 15% in Abington Township. Accurate location of steep slopes may require field survey.



Natural  
Environment  
*Steep Slopes*



Some of the Steepest Slopes in the Township Lie in and Around Lorimer Park (pictured) and the Pennypack Creek Valley

## Natural Environment: *Water Quality*



The Horsham Air Guard Station on Easton Road is the Site of the Former Willow Grove Joint Reserve Base



The North Hills Well is Being Upgraded for Advanced Filtration

# Initiatives and Partnerships

## *Urban Forestry*



The Pennypack Trail passes alongside the Pennypack Creek Conservation Landscape

Initiatives and Partnerships  
*Woodlands Restoration*



Wooded Areas Occupy Much of Ardsley Wildlife Refuge

## Initiatives and Partnerships: *Environmental Conservation*



The Ardsley Wildlife Sanctuary Plays an Important Role in Abington Township in Environmental Conservation, Stewardship, and Education.





Initiatives and Partnerships  
*Environmental Conservation*



The Abington Township Game Preserve was Recently the Site of a Major Tree Planting

# Initiatives and Partnerships: *Stewards of Abington's Natural Environment*



Volunteers such as those with the Shade Tree Commission are an important part of the township's environmental stewardship efforts

Environmental Education is One of the Core Missions of both the STC and EAC

## Initiatives and Partnerships: *Stewards of Abington's Natural Environment*

The Environmental Advisory Council manages a rain barrel program which helps reduce stormwater runoff, and therefore pollution, erosion, and flooding.

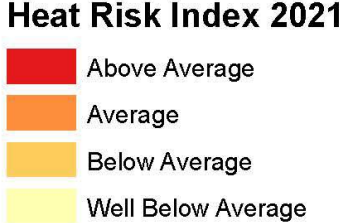
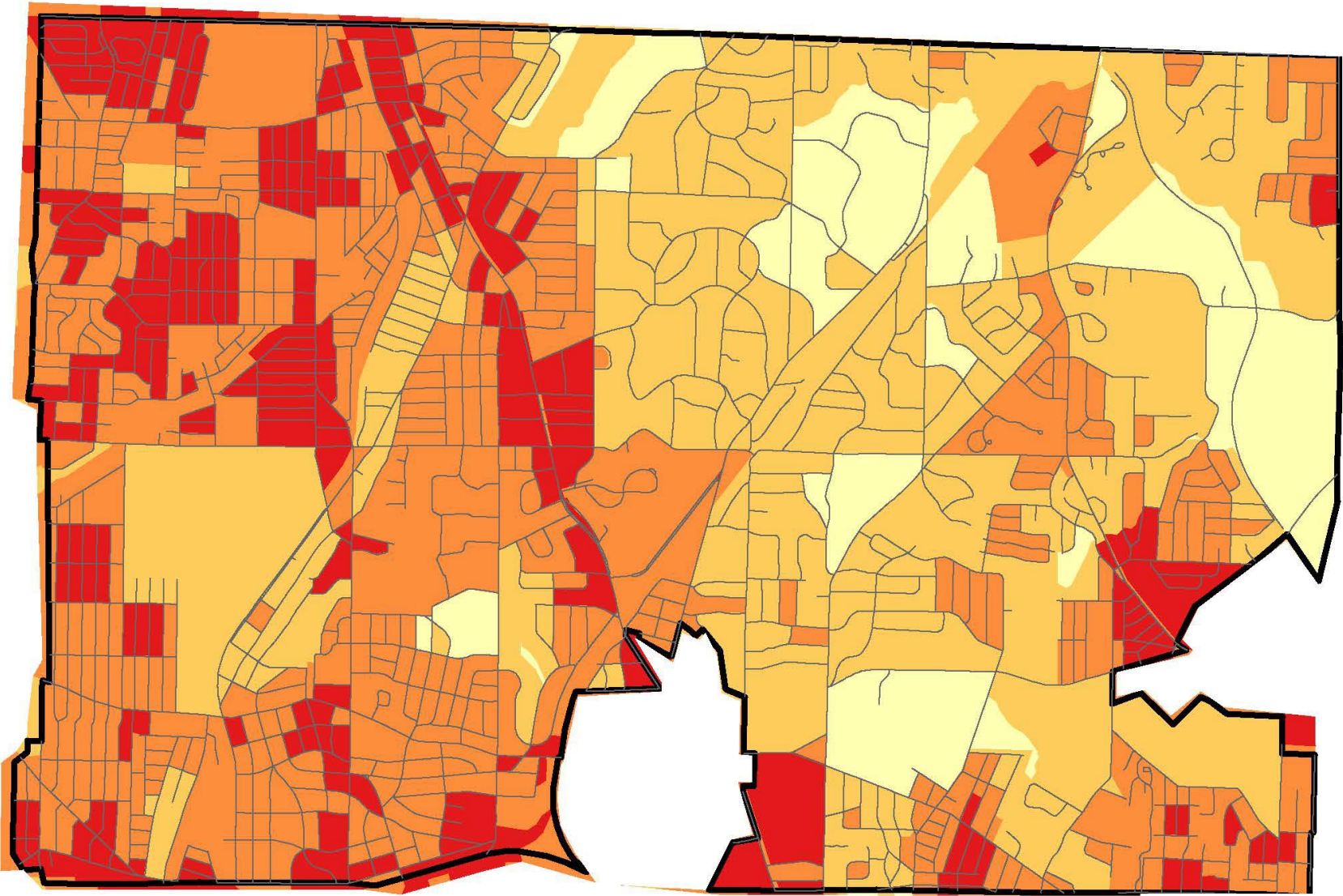
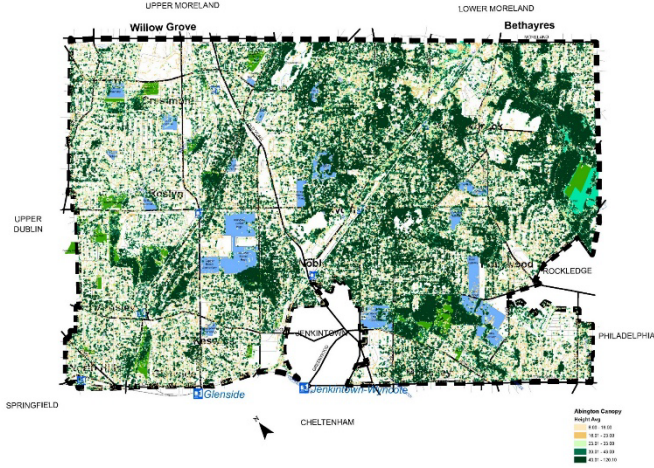


# Initiatives and Partnerships: *Stewards of Abington's Natural Environment*



The Abington Shade Tree Commission Works to Enhance the Township's Tree Canopy by Using Volunteers to Plant Trees in Areas Such as Parks and Schools. Photo Credit: Rita Stevens

Resilience:  
*Environmental  
Sustainability and  
Adaptation to Climate  
Change*



Note: As you can see, there is a relationship between areas with fewer canopy trees and areas with higher heat risk.

Resilience:

*Environmental Sustainability and Adaptability to Climate Change*



Examples of environmental sustainability measures include a rain garden at Penn State-Abington's Lion's Gate Dormitory (left) and a bioswale along the parking lot at Alverthorpe Park (right)

# RECOMMENDATIONS



The township provides for sustainable energy systems; writing a sustainability plan would more holistically embrace environmental sustainability (photo: solar panels on home in Crestmont)



Abington will demonstrate best practices in environmental management, similar to how the school district did with its rain garden.