

Proposal - June 14, 2022

Abington Comprehensive Recreation, Park, and Open Space Plan



Table of Contents

1. Title Page & Table of Contents
2. Contact information
3. Personnel Qualifications
4. Planning Experience & Project Approach
5. Client List
6. Additional Information



1. Title page / TABLE of CONTENTS

SIMONE COLLINS INC. LANDSCAPE ARCHITECTURE

119 East Lafayette Street
Norristown, PA 19401
610 239 7601

Shareholders: **William Collins, RLA, VP—CONTACT**
wcollins@simonecollins.com
Peter Simone, RLA, Pres.
psimone@simonecollins.com

Proposal date: June 14, 2022

Table of contents		page
1.	Title Page & Table of Contents	1
2.	Contact information	2
3.	Personnel Qualifications	5
4.	Planning Experience	7
	Project Approach	9
5.	Client List	22
6.	Additional Information	25

2. Contact Information

Simone Collins Inc.
Landscape Architecture
119 East Lafayette Street
Norristown, PA 19401
610-239-7601

Owners Peter Simone, Pres
William Collins, VP

Year Established: 1990

MBE status: none

CONTACT

William Collins, RLA, Vice-President
wcollins@simonecollins.com

Simone Collins Team Contacts

Sarah Leeper, RLA
sleeper@simonecollins.com

Emma Haley, Staff Landscape Architect
sleeper@simonecollins.com

Anita Nardone, PE, Staff Civil Engineer
anardone@simonecollins.com

Bryce Brucker, Staff Landscape Architect
bbrucker@simonecollins.com

Pat Stasio, CRPC
pstasio@uppermoreland.org





June 14, 2022

Richard J. Manfredi, Manager
Abington Township (AT)
1176 Old York Road
Abington, PA 19001

RE: Proposal for Services: Abington Township Comprehensive Recreation, Park and Open Space Plan (CROSP)

Dear Mr. Manfredi:

Simone Collins is pleased to submit this proposal for professional recreation planning services in collaboration with Patrick Stasio, CPRP.

RE: SC legal / policy potential conflict of interests: NONE

RE: SC owners law enforcement investigations: NONE

RE: SC pending litigation : NONE

RE: SC insurance coverage: no self retention	
Commercial Liability Aggregate	\$4M
Auto	\$1M
Umbrella	\$1M
Workers Comp	\$.5M
Provider : Acord;	
Agent Fenner and Esler	

RE: Client conflicts: NONE

Best conflict resolution is prevention—specifically clear respectful communications.

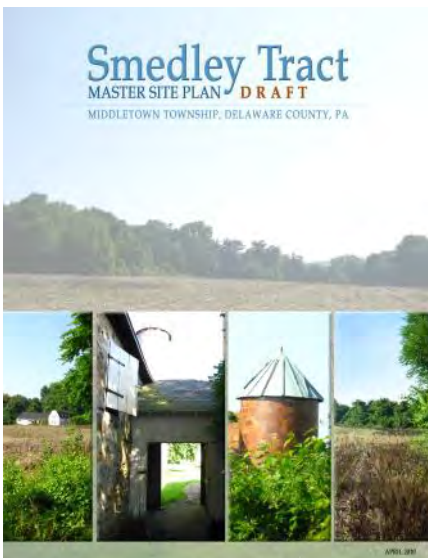
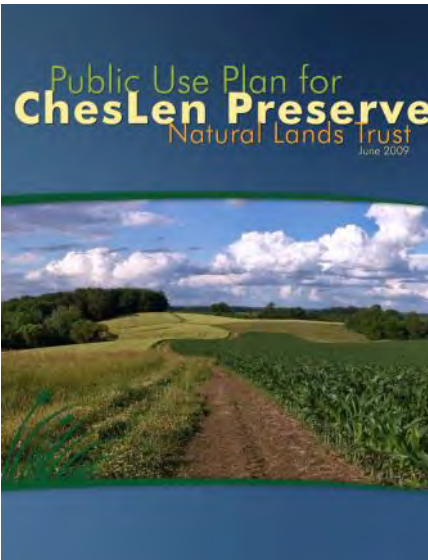
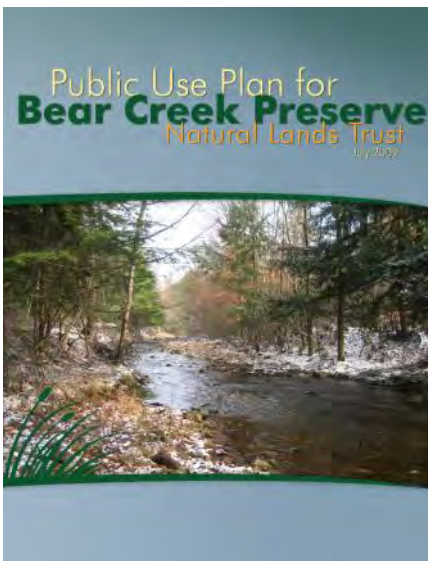
Our fee proposal is for a fixed amount—submitted under separate cover. Thank you for your careful review of this proposal. Reach out with any questions.

Simone Collins Landscape Architecture

William Collins, RLA
wcollins@simonecollins.com



The SC plan for Penllyn Woods Park placed 4 play fields on uplands within a 75 acre site composed mostly of wetlands.



Examples of Relevant SC Project Experience

Simone Collins has experience designing scores of parks and open space sites and over 100 trail and greenway projects, including:

Upper Saucon Township Comprehensive Parks, Recreation and Open Space Plan. As one of the fastest growing communities in the Lehigh Valley, the township has both opportunities and challenges toward maintaining a robust inventory of recreational facilities and programs while it tries to add to the inventory of preserved open space.

Limerick Township Open Space Plan Update. SC is completing an update to the Township's Open Space Plan toward the next 20 years of open space preservation and acquisitions.

Exeter Township Comprehensive Park, Recreation & Open Space Plan, Berks County, PA. Evaluation of the Township's 970 acres of existing facilities and recommendations for acquisition, programming and trails.

Woolwich Township, NJ, Comprehensive Park, Recreation & Open Space Plan. Plan that included planning for the township's extensive TDR zoning. This is a growing township that is projected to expand by over 100% in the next 25 years.

East Hanover Township Parks, Recreation & Open Space Plan, Dauphin County, PA. A semi-rural community of 6,000, SC completed the township's first plan.

Cumberland County, NJ, Open Space and Recreation Plan. This was the county's first such plan. The plan established roles for local government in recreation and open space preservation and also provided for future sea-level rises and other changes to the environment.

Lehman Township Recreation and Open Space Plan, Pike County, PA. Assessment of current lands and programs and recommendations for land acquisition and park and trail development.

Upper Moreland Township Parks and Recreation Plan, Montgomery County, PA. Plan for this community of 25,000 residents included recommendations for a community center and a township-wide trail master plan.

Examples of relevant SC projects—in the rear section of this proposal.

3. Personnel Qualifications

William Collins, RLA, ASLA will serve as principal in charge of the SC team for the Abington CROSP project, as he has served for recreation, transportation, trail planning, heritage and cultural projects at SC over the past 30 years. Bill participates actively in public engagement tasks.

Bill collaborates regularly with engineers and other allied professions to create landmark projects—with a specialty in designing funding strategies that enable SC clients to get their projects built. Bill served as principal in charge for four phases of the South Bethlehem Greenway; the Bethlehem Skate Plaza; two phases of the Lehman Community Park project; the Monroe County Open Space Plan; the Bushkill Village Conservation Study and the updated Lehman Township Comprehensive Plan.

Bill worked with SC project managers Sarah Leeper and Emma Haley on all City of Allentown, Bethlehem and other municipal park planning and design projects.

Sarah Leeper, RLA will serve as project manager for Abington Township, which is her home community. Sarah has served SC clients for nearly 20 years and she has led the planning and design of many award winning parks during her career. Sarah specializes in public involvement.

Notable park and recreation assignments completed by Sarah include: Limerick Township Community Park Master Plan; Detweiler Park Master Plan, Dauphin County; Miry Run Ponds Master Plan, Mercer County, NJ; and the award-winning master plan for the Trexler Preserve in Lehigh County. Sarah brings unmatched organizational skills and artistic expression to the process of planning important civic spaces.

Emma Haley, Landscape Architect, will serve as lead staff landscape architect for the Abington CROSP project. Prior to experience at Simone Collins, Emma served on an engineering team that completed green stormwater infrastructure designs for the Philadelphia Water Department, as well as transportation improvements, stream restorations, park master plan designs.

Most recently, Emma served as project manager and lead designer for the Percy Ruhe Park Master Plan Study in the City of Allentown—working with Bill and Sarah. She currently is managing the construction documentation phase for the Southern Park project in New Castle, DE—a 120-acre site planned for an existing cornfield.

Anita Nardone, P.E will serve as staff civil engineer for this assignment. Anita has worked intensively on green infrastructure initiatives for the City of Philadelphia which feature pedestrian accessibility integrated with stormwater BMP engineering, multi-modal transportation and smart land planning.

Anita is a skilled communicator with clients, local stakeholders, technical consultants, municipal planners and agency managers to achieve partnership successes across a broad range of projects over her 20+-year career. Her project experience includes higher education campuses, School District of Philadelphia sites, industrial re-development sites, Philadelphia Water Department green stormwater infrastructure projects, and parks & rails. Anita is currently project manager for the Moore Rd. Multi-Modal Trail in King of Prussia and Upper Macungie Connectivity Study



3. Personnel Qualifications (cont'd)



Patrick Stasio, Certified Park and Recreational Practitioner (CPRP) and is the Director of Parks and Recreation for Upper Moreland Township in Montgomery County, PA.

Mr Stasio also collaborates regularly with Simone Collins to help fellow municipalities to create smart recreation program strategies.

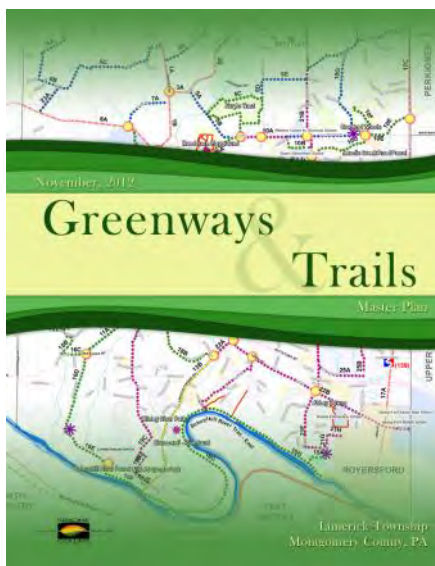
Pat has held this his upper Moreland Township position for 22 Years, and has served in the municipal park management industry for more than 30 years.

Mr. Stasio's real-world experience makes his work as a collaborating subconsultant to municipalities so compelling

His day to day work includes managing large and complex parks, recreation, maintenance, and programming operations for a major municipality with a population of over 25,000.

Mr. Stasio's insights into the operation, programming and site maintenance of parks will be invaluable to Abington Township for the development of recreation planning and for operational issues connected to the park system.

Pat Stasio will be a key contributor to multiple tasks as indicated



The Simone Collins team will examine potential connectivity improvements throughout the township. We will access available sidewalk inventories, look at the potential to connect neighborhoods to parks in means other than motor vehicles and determine how more residents can walk, run and bike between more locations.



The SC plan for Wilson Farm Park created a 2 acre stormwater management basin that also serves as an irrigation reservoir for the park's 7 sports field. The pond also created a beautiful aesthetic element.



4. SC Planning Experience-Project Approach

SC has completed **Comprehensive Recreation Plans and Open Space Plans** for many communities, including:

- Exeter Township Berks County, PA
- Solebury Township Bucks County, PA
- East Hanover Township Dauphin County, PA
- Woolwich Township Gloucester County, NJ
- Emmaus Borough Lehigh County, PA
- Lower Saucon Township Lehigh County, PA
- Limerick Township Montgomery County, PA
- Lower Providence Twp. Montgomery County, PA
- Towamencin Township Montgomery County, PA
- Upper Moreland Township Montgomery County, PA
- Lehman Township Pike County, PA
- Cumberland County, PA
- Cumberland County, NJ
- Monroe County, PA

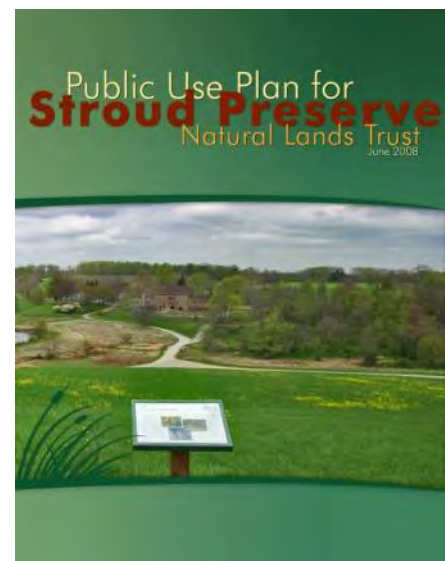
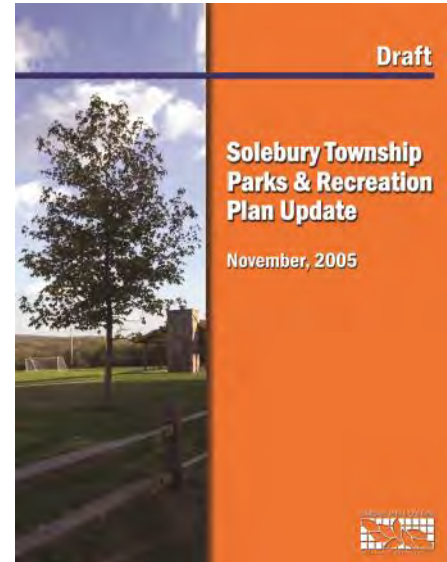
SC has completed over 120 trail, greenway and walkability plans across the Commonwealth. SC trail planning and design began over 28 years ago - at the forefront of the growing trails, greenways and multi-modal movement, including:

- Conodoguinet Creek Greenway Trail MP, Cumberland County, PA
- Upper Macungie Township Connectivity Plan, Lehigh County, PA
- Moore Ave Trail/Connectivity MP, KOP District, Montgomery, PA
- Walk Bike Bloomsburg Master Plan Columbia County, PA
- Camp Hill Bicycle & Pedestrian Master Plan Cumberland County, PA
- Georgetown Pedestrian / Bicycle Master Plan Sussex County, DE
- Lower Allen Township Multi-Modal Master Plan Cumberland County, PA
- South Bethlehem Greenway Master Plan/CDs Northampton Co., PA
- Radnor Twp Trails & Greenway MP, Trails CDs Chester County, PA
- **Walk, Park, Train Abington**, Abington Twp Montgomery Co., PA.

As open space becomes more precious and in greater demand, the ecological health of those parcels become increasingly critical to conserve.

OS&R plans by SC include:

- Trexler Preserve MP Update Lehigh County, PA
- Minsi Lake Greenway & Stewardship Plan Northampton Co., PA
- Kurylo Preserve MP, Limerick Township Montgomery Co., PA
- Mt. Penn Preserve Master Plan, Reading Schuylkill County, PA
- Lacawac Sanctuary Master Plan Wayne County, PA
- Hellam Hills Preserve Stewardship Plan York County, PA





Detweiler Park (above) An early SC concept plan of a 4070acre site located in Dauphin County. The Simone Collins team was chosen for this assignment from among 11 firms across the state.



East Hanover Community Park Master Plan, Dauphin County



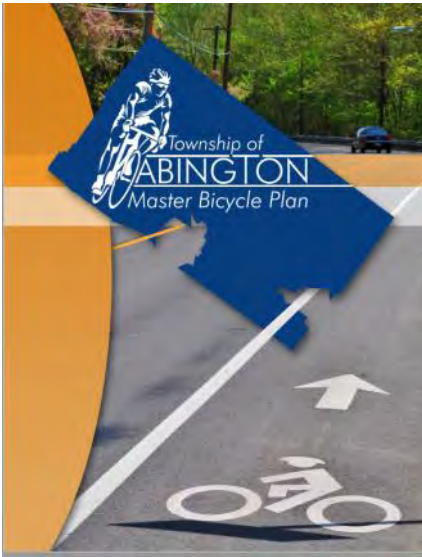
Radnor Greenways and Open Space Plan

Simone Collins prepared the Radnor Township Greenways and Open Space Network Plan.

The plan creates interconnections to Radnor’s extensive park system with a series of on and off-road trails.

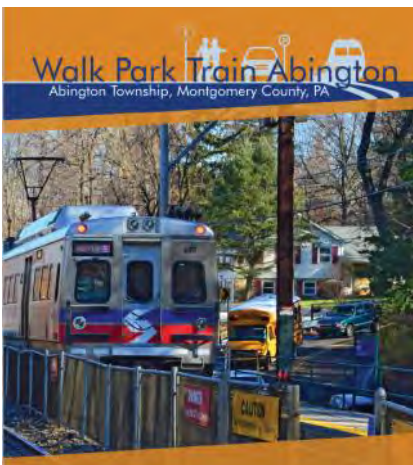
This plan was the basis of SC’s successful grants totaling \$225M. SC is currently completing the CDs.

Construction was completed in 2022 under budget. SC was the lead of a multi-disciplinary team.



Abington Township Bike-Ped-Transit plans

SC knowledge of the unique opportunities and challenges of Abington Township from previous projects will inform how open space and recreation planning may fit seamlessly into the fabric of the community.



4. Planning Experience-Project Approach (cont'd)

SC Team Approach

This SC Team Work Plan commits to completing the tasks as listed in the project RFP, and to delivering the products which are based on the PA DCNR guidance for open space and recreation planning projects. (www.docs.dcnr.pa.gov/cs/groups/public/documents/document/dcnr_20029132.doc)

For brevity, this SC proposal does not repeat the details of the DCNR guidance, but stipulates to the DCNR scoping document as the basis for completing this CROSP project for Abington Township.

In this proposal, the RFP tasks are divided into five sections as they will be presented in the project report, with the RFP tasks addressed logically within those sections. This proposal clearly notes where SC proposes to add to or modify the standard DCNR scope.

SC has previously served the Abington Township (AT) community and we look forward to an opportunity to work again with local stakeholders and residents to articulate their collective vision for their municipal open space, greenways, parks and recreation.

Project Management of this project be conducted by both Sarah Leeper and William Collins.

Public Involvement is addressed as a major critical investment in this project and is supported with a considerable portion of the total project budget. (refer to separate fee proposal.)

SC Team Scope of Work

Scope Section 1 Executive Summary

SC will prepare the Executive Summary as the introduction to the project report. The content and format will enable it to function as a standalone publication—for online reading, or printing if needed. The Executive Summary will include the project Purpose, Goals, Mission Statement; and project overview and synopsis of findings / strategies.

Task A. Purpose, goals, objectives

The SC Team will assist the Township committee and residents to draft their goals for this community plan at the start of the project. These targets will be revisited at the Draft stage to ensure their accordance with

the original community intent. Examples of previous project goals include:

- *Engage in an open and transparent exchange of ideas where all ideas are considered and where everyone's voice can be heard throughout the design process.*
- *Provide for recreational needs of all age groups.*
- *Provide for recreation needs of residents who are physically or developmentally challenged.*
- *Protect the Township's Open Space and ecological resources.*

Task B Public Participation (refer to Section 5)

Task C Background Information (refer to Section 2)

Task D Mission Statement / Project Synopsis

SC will prepare the draft Mission Statement based on the draft Purpose, Goals and Objectives. The statement will be drafted at the project start—with a review and finalization at the Draft report stage.

A project synopsis will be included in the Executive Summary that provides an overview of the Abington Township community, its open space and recreation resources, and its strategies for stewardship over the next decade.

Scope Section 2 Inventory & Analyses

Section 2 tasks include all investigations; on-site observations; reviews of existing data; staff information; agency communications; and analyses of potential alternatives for municipal open space, greenways, parks/recreation improvements and management. Section 2 tasks will be shared between SC staff and Mr. Stasio, as described.

C Background Information

Data inventory—The SC Team will rely on AT to provide a list of known available data, regarding all aspects of the Township planning and development projects. This list should be inclusive, so that Township strategies for transportation; stormwater; habitat conservation; education; community development; and historic resources will inform the SC team and can be assessed in relation to current and future to recreation resource conservation and improvements.

The SC Team will review the AT list with notes to include additional data sources of interest to the SC team / project.



SC completed the master plan and construction drawings for Squire Cheyney Park in Chester County. Wayfinding signage and branding may be an important aspect for Abington Township.



SC has completed plans for 3 of the largest preserves owned and operated by the Natural Lands Trust, including ChesLen and Stroud in Chester County. “When the experts needed experts, they came to Simone Collins”.

SC trail and greenway plans are - literally - too numerous to mention. SC has mentored many engineering firms in trail design who are now our friendly competitors.



Acquiring data—The SC Team will collaborate with AT to secure copies of needed data, preferably digital, GIS/Autocad, and paper copies of files if necessary. AT will request additional data from sources where there are advantages for the municipality to make the requests. If essential data requires fee payments, SC and AT will confirm how payments might be made through the SC expense budget.

Municipal demographics—Available demographic data will be used by SC to set the social context for this AT cultural project.

Stormwater management—The SC team will discuss the Township strategies for its MS4 stormwater plan with the municipal engineer, to identify opportunities for parks and open space conservation to contribute to AT stormwater management goals.

Existing Conditions—Data inventory, collection, review The SC team will receive and review all relevant information about the park system from the Township. SC will supplement the digital and mapping data with on-site field visits by the SC team.

Site observations—Part of the data collection tasks include in-field site observations, possibly critical site measurements, and site photos. SC staff will conduct site observations—with an invitation to the project committee to participate.

Data review / Analyses —The SC Team will create a project data inventory (to be listed within the CROSP report appendix) that includes references and hyperlinks to the primary resource documents that are located online and/or in a separate digital Appendix document.

Data analyses and displays—A list of opportunities and challenges/deficiencies will be created based upon the SC team analyses of the acquired data. SC will use the information acquired from the public involvement tasks to supplement its assessments of opportunities and needs. This task includes preparation of project base maps, and township-wide analyses maps and diagrams.

Other inventory / analyses tasks—Other specific work under this review of Borough ordinances with relevancy to this plan, and the review of surrounding municipality open space and recreation plans—to identify physical trail and habitat linkages and opportunities for collaborations.

Conceptual analyses—will be developed by the SC team to identify preliminary plan and program alternatives that will help AT satisfy the needs identified in this process—such as improved service delivery will

and best uses of resources/facilities to serve Township citizens.

(D) Mission Statement / Project synopsis

Refer to Section 1—Executive Summary—for Task details.

Task E. Agency Administration

SC staff will be assisted by Mr Stasio to review and assess records of Abington Township parks and recreation management practices and budgets. Mr Stasio will participate in specific Key Person interviews and project meetings to interact with Township staff and those partner NGOs who collaborate with AT to provide recreation programs (maintenance, capital improvements, etc) within the community.

The SC Team will place special emphasis on identifying and communicating with diverse user populations within the Township. SC will seek guidance from Township leaders, the project committee, focus groups to help identify “Key Persons” to be reached.

SC and Mr Stasio will collaborate to complete this section of the project report—which will identify projected needs, issues and opportunities specifically focused on the Township administration of its parks, trails, open space and recreation assets.

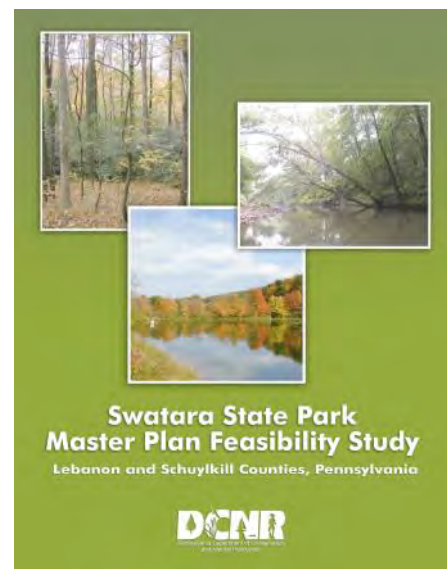
Task F Agency Personnel

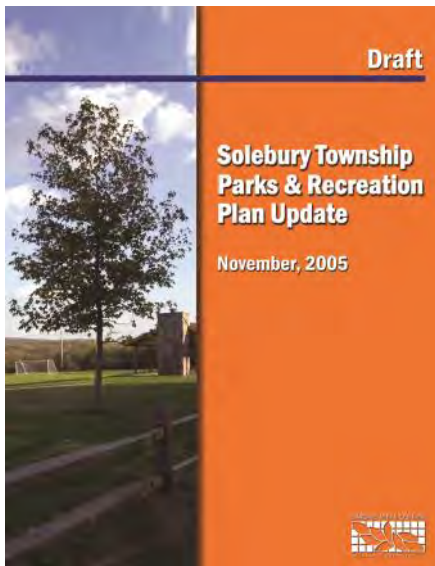
SC staff will collaborate with Mr Stasio on this task to meet with Township (and NGO) recreation staff. The SC Team will review and discuss physical issues and budget administration with the Township manager, public works director, municipal engineer, and other Township representatives to confirm findings and discuss options before bringing ideas to the public forums.

Task G Facilities & Open Space

SC will lead the assessment of the physical resources—including land; environmental resources: trails/greenways/ped-bike routes; structures; facilities; and fixed equipment. Specialty features such as skating rinks and swimming pools will be described at a master plan level (and recommendations will be made for resources that may require specific studies.)

AT will provide its facilities inventory, and the SC staff will compare the data to its independent observations. SC will review the facilities inventory findings with Mr. Stasio—before reviewing with Township representatives—to ensure that the Township “program” needs can be





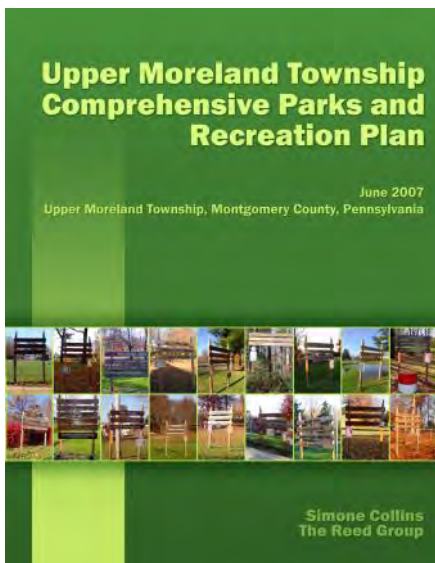
met by the current facilities—and it not, what improvements may required—with options for by who, how, and by when.

Task H Facilities & Equipment Maintenance

A facilities maintenance assessment and a general risk management analysis will be conducted by the SC staff and reviewed by Mr Stasio—based on an inventory the maintenance operations, and conversations with maintenance staff (supervisors, foremen, and staff) to understand how maintenance operations are currently carried out and if there are areas for potential efficiencies and improvement.

We gauge residents thoughts about existing park maintenance through all public involvement venues including the online web survey. SC assess opportunities to improve maintenance and maintenance and review those ideas with AT staff. SC will estimate increased maintenance demands for a growing park and trail system in AT.

SC will assess existing security measures and determine if and where improvements are warranted.



Task I Recreation Programs & Services

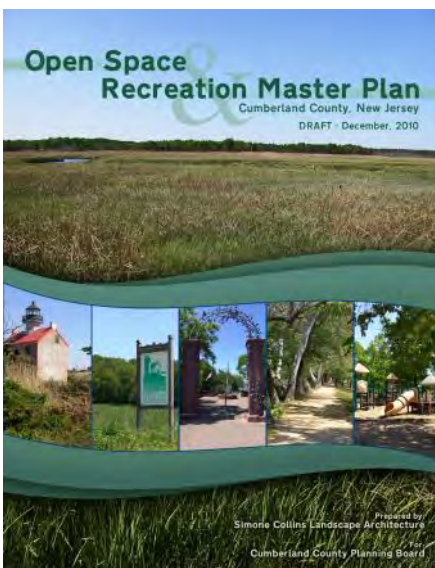
Mr. Stasio will lead this task by reviewing the current recreation programming (public and private) within the AT community, followed by discussions with program managers and providers—which will be conducted by video calls, Key Person interviews and other outreach methods.

Program / Services Matrix—Mr Stasio will develop a matrix of currently available recreation programs and services and compare it with needs expressed by the public, and against national and state standards for meeting municipal open scapce and recreation needs—for a modern, diverse community.

DCNR recreation mapping tool—SC will use the DCNR community recreation mapping tool to include AT data, and to analyze the areas of the Borough that might be deficient in walk-bike-ADA accessibility to recreation resources.

Scope Section 3 Plan Alternatives

SC will prepare a Township-wide Recreation and Open Space asset analyses map as the basis to graphically display existing conditions. Based upon analyses of all data and public responses, SC will prepare alternatives analyses for AT to select preferred alternatives.



Task P-1 Alternatives for Improvements

SC staff will synthesize multiple ideas collected into schematic alternatives for improvements to open space, recreation facilities and service programming—for review by the committee and the public.

SC will collaborate with Mr. Stasio to identify where needed programming may be possible to provide within existing resources—and, provide options for adding/developing additional resources within the Township.

SC will use its site observations and data analyses to identify potential opportunities to acquire new site, and develop underutilized site to provide for projected Township needs.

Alternative plans—SC will prepare alternative schematic diagrams for the areas of the Township where improvement alternatives are identified.

Preliminary Cost Estimates—will be prepared by SC staff as an important decision-making tool. Costs will be estimated for capital improvements, program developments, land acquisition options.

Inclusive Play Area Site Alternatives Analyses—SC is including the three site alternatives analyses task within the scope and budget of this AT CROSP project. SC considers the initial task in that separate project to be a “master planning” function of alternative site selection that is typically a task in a municipal open space and recreation plan.

SC Note—since AT has solicited the Inclusive Plan and CROSP projects concurrently, there is no downside—and in fact there are advantages to not separating the “planning” tasks of the inclusive play project from the balance of the Township recreation planning.

SC staff will expedite the inclusive play planning analyses tasks so that the township site preferences and program recommendations can be provided efficiently and timely to the playground design team.

The Township can eliminate the initial planning task from the inclusive play scope to reduce that task fee.

Task P-2 Preferred Plan / Program

Based upon the preferences expressed by the public and resulting guidance from AT leaders, SC will distill a final CROSP program and map that displays existing assets and preferred improvements within the Township.





A typical SC public meeting.

Scope Section 4 Financial

SC will lead the development of the financial tasks—with specific support from Mr. Stasio.

Task J Financial / Funding

Financial planning recommendations—will be addressed in the report as separate budget recommendations for capital projects, operations and maintenance, and service / program delivery of the preferred improvement plan.

SC will prepare a draft capital budget—as a phased strategy. SC and Mr Stasio will collaborate to prepare a draft 5-year O&M budget. Mr. Stasio will prepare a budget estimate for Township to deliver the preferred recreation program.

These budgets will be based on cost estimates by the SC Team (refer to Task K—Cost estimates.)

Funding Strategy— SC are specialists in developing successful partnership funding strategies for our clients. SC services on this task begin immediately upon selection



We work closely with our clients. In-person meetings still occur, although the public has developed a preference for online meeting conveniences.

Task K Cost Estimates / Recommendations

SC and Pat Stasio are experts at developing accurate cost estimates for capital, O&M, and recreation program improvements.

Cost estimates will be developed at the end of 2022, by the SC Team based on projected 2023 costs. The estimating products will be in EXCEL databases that are capable of being updated annually by the Township—including functions to design phased project by selecting a from menu of improvements/costs and applying cost escalation rates base upon estimated year of expenditures.

Recommendations for expenditures will be made by SC—based upon multiple factors including, community priorities, Township budgets, available partner funding, and realistic project sequencing.



All ideas are heard and recorded on the cards.

Task L Plan Implementation / Schedule

SC will lead the development of an implementation schedule for preferred Township recreation improvements.

Scope Section 5 Public Involvement

SC will lead the public participation tasks with support from Mr. Stasio regarding recreation programming.

The SC team proposes five (5) Committee Meetings; three (3) Public Meetings; five (5) Focus Group and ten (10) Key Person interviews. SC will administer an online public survey for AT.

All other staff communications will be included within the scopes and budgets of the project tasks. Communications protocols will be set with the Township and project committee at the first project committee meeting.

Simone Collins Public Participation Methods—One of the challenges inherent in a project of this type is the large amount of information that comes from the public and other sources—which must be organized, synthesized, and understood—by all, for real design advocacy to occur. All ideas are honored and memorialized in the project report.

Card technique—SC utilizes a communication tool called “the card technique” to ensure that there is clear, concise communication between everyone during meetings. How the card technique works: The creative ideas for the project are divided into three categories: Goals, Facts and Concepts.

- Goals are the goals for the project, initially broad, then specific: i.e., “Prepare an update to the Comprehensive Recreation and Park Plan for the Borough of Emmaus,” or “Provide a greater range of programming,” or “Provide for the recreational needs of residents.”
- Facts are the existing conditions, unique environmental features, the existing landscape, the history of the Borough and area, existing resources, existing road conditions, adjacent uses, and any other existing conditions.
- Concepts are all of the various ideas for attaining the goals of the project and suggesting the types of improvements desired. “Create small tot lots in several areas,” “Provide for future connections to regional trails,” or “Create a system of on-road trails,” or “Provide a community dog park,” or “Work closely with the school district to share recreational facilities.”

B-1 Committee Meetings

Five (5) Committee Meetings will be conducted—most likely as virtual meetings—tbd. These meetings will follow a linear progression of the work as outlined in the RFP. We suggest that the AT consider opening



The cards create a permanent record of the public meetings.



Display boards are important to explain concepts and ideas.



SC professionals are accessible to the community for the duration of the project.



SC completed the master plan and construction drawings for Squire Cheyney Park in Chester County. Wayfinding signage and branding may be an important aspect for Abington Township.

A sample of signage for Delaware County Park branding is below.

committee meetings to the public. The Committee meetings function to review progress and prepare for public meetings.

B-2 Public Meetings (PMs)

PM 1—The SC team will present an in-process inventory and analysis of existing parks and recreation facilities and conduct a discussion of the possibilities for each park.

The SC team will seek to uncover perceived or real deficiencies at parks as well as suggested improvements for each site. We will create a matrix list of each park showing existing facilities and attendees will be asked to respond to facilities that are important to them. The SC Team will also solicit ideas for new facilities/improvements at all parks.

The online public survey will also be opened at this first meeting. SC will use the “wiki-mapping” tool so that interested citizens may participate interactively—by making suggestions on the Township map of various park sites. Results of public meeting #1 will be preliminary feedback for the parks and the Borough’s recreational programs. All ideas will become a part of the official record for this meeting and the master plan.

PM 2—will present a more complete analysis of existing conditions; the public survey results to-date, and initial concept alternatives for discussion. Based on feedback on initial concepts, the SC team will begin to create the draft plan.

PM 3—will present the draft CROSP report—with the mapping and report narrative; cost estimates; recommendations; and all support data from from the planning process.

B-3 Focus Group Meetings

The SC team proposes five (5) Focus Group meetings to be held early in the process—and populated by Active Sports Groups (youth, adult, other); Passive Activities Interest Groups; Older Adult Activities and Facilities; Cultural, Religious and Arts Groups, diverse populations, and others to be selected by the Township.

90 minute meetings typically yield important information about specific constituencies and are helpful in determining the important issues in a community. Creating meetings with similar types of organizations leads to a dynamic process compared to meeting with each stakeholder individually.

B-4 Key Person Interviews

The SC staff and Mr Stasio will conduct the ten (10) Key Person interviews for the project. Interviews are usually conducted by phone or video calls, and the KP's will be selected by the Township/Committee. SC can assist with ideas for KPs, including police, fire, EMS, school board representatives—etc.

B-5 Online Public Survey

The SC team will draft and administer an internet survey to create an important venue to help AT to determine public opinions about the current parks and recreation programs and facilities and future recreation needs.

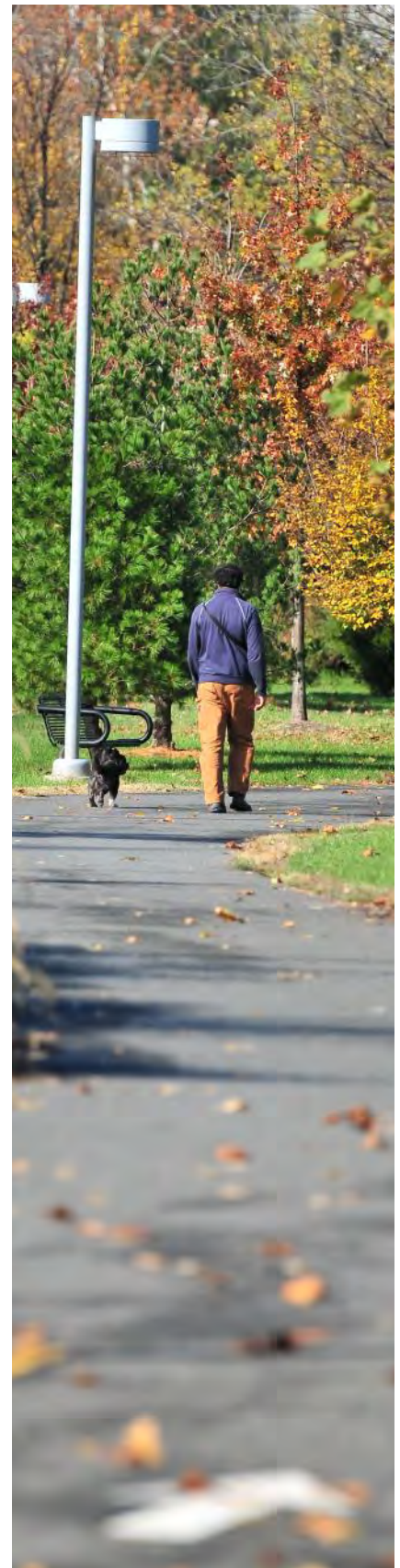
The public opinion survey will be open for responses for approximately 5-6 months which allows stakeholders adequate time to become engaged and express views.

Wiki-Mapping—will be a tool administered by SC as part of the inventory and public involvement tasks. SC will develop a Township-wide wiki-mapping application for interactive use by residents during the planning process. This easy-to-use mapping will allow participants to make a specific recommendation in a specific location for a park improvement or trail or greenway link anywhere in the Township.

This product will ensure that valuable information is captured and that concepts are clearly communicated to the SC team.



SC often conducts site walks as part of public or committee meetings. This might be very effective to see parts of Abington Township with Study Committee members. The SC team plans on making several site visits to observe existing conditions across the Township.



Dupont Crescent Trail, Philadelphia - Master Plan and Construction Documents by SC



South Bethlehem Greenway—Master Plan and Construction Documents by SC. This is a city linear park and green transportation infrastructure.

Products Deliverables

Executive Summary

The plan / report will be posted to the Township website for a 30-day draft plan review period to give residents and other stakeholders opportunity to review and comment on the plan.

The SC team will meet with the Project Committee at the end

of the review period and decide on the changes to create the final Plan for the Township.

Draft Plan

SC will design the CROSP report to present all essential data and ideas in a streamlined narrative and highly graphic format that is visually inviting, widely accessible, and easy to understand and use by diverse stakeholders.

Distilling data into a compelling graphic-narrative report—The information from the data collection, analyses, and stakeholder engagement tasks will be synthesized by SC to inform the plan content. SC will design the report visual presentation aspects to engage citizen readers.

Report format options—SC will create a versatile report format that can be used digitally online and as printed paper—if needed. Online report publishing is the preferred venue for public to access the Plan. For multiple reasons. Advantages of online publishing include: less paper (trees) expended; focusing finite project resources on creative production costs; longer product durability; greater public access; and ease of making future updates. SC can create a digital report that readers can print at their discretion and expense, if absolutely needed.

Mapping files / displays—these products will be digital—and, in fact are more economical, longer lasting, and more accessible as digital documents which can be “zoomed in” for close viewing as needed on computer monitors. SC can prepare print-quality version of mapping files for paper displays that might be desired for specific purposes by the Township.

Report Appendix—much of the data collected and assembled for this project will be compiled and presented in the report Appendix—and published in a cloud repository for public access. The Appendix will be compiled as a resource to support the preferred “streamlined” format of the Final Plan report. Access to all support data in the Appendix and other web sources will be included as “clickable links” in final Plan Report.

Review period for the Draft Plan report—SC suggests a minimum of 30 days for public review and comment on the Draft Plan. SC will collaborate with AT on the best ways to post the Plan for public review and the easiest ways for the stakeholders to submit comments.

The review period is expected to run concurrently for all stakeholders—with provisions for AT to review and advise. AT will assemble all comments and provide annotations to the comment list that specifically advises SC what modifications to make to create the final Plan.

Revisions (to Draft)—SC will review written guidance collected by and vetted by the AT Committee—regarding the modifications to be made to create the final Plan. SC will make those modifications as directed and return a courtesy pre-final review version of the report to AT for any essential corrections only. Once AT responds to the pre-final version, SC will complete any corrections as indicated.

Final Plan

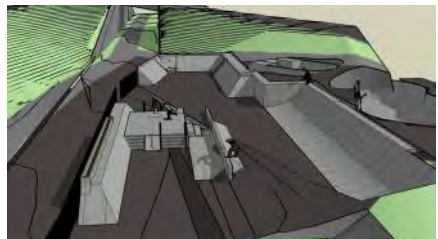
SC will prepare the Final Plan report, Appendix, and other elected products—and deliver them to Abington Township in the formats agreed.

SC delivery of final products to Abington Township will mark the completion of SC Team services.

Abington Township will upload the Final Plan and support materials to the County website for open public access.

Project reimbursable expense items—all report products will be elected by Abington Township—based on preferences and considerations of costs to produce them. This SC proposal estimates about 5% of the estimated labor cost as a line item to budget for project direct reimbursable expenses.

SC will assist Abington Township assess product expense options and make smart decisions. SC does not mark up overhead on any direct project expense costs.



Above—images of the Bethlehem Skate Plaza on the Greenway—concept thru completion—as co-designed by Simone Collins.



Schedule

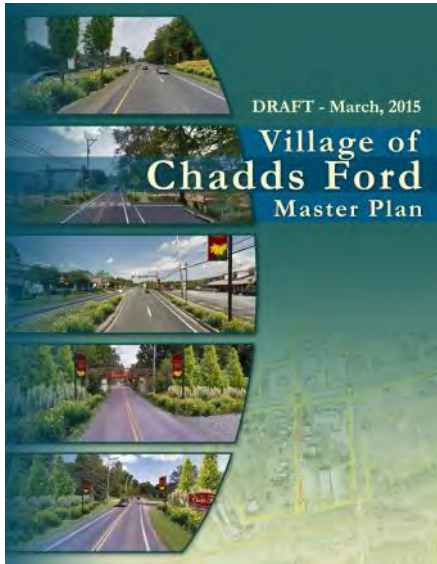
The SC Team suggests this project schedule be negotiated to be completed in eight months.

SC will work with the Township to design the project schedule to meet the Township needs—with meeting schedules that are designed to avoid summer season and winter holiday dates.

Fee

The SC Team fee for this Abington Township CROSP project is provided under separate cover. The service budget was developed using competitive SC rates, and is consistent with many costs for similar municipal plans.

The SC scope and budget include the “planning” task for the Inclusive Playground project withing



5. CLIENT LIST—SC References

Patrick Leonard, Director of Special Projects

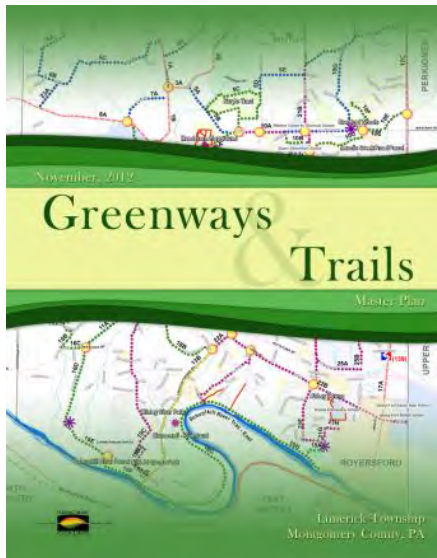
Upper Saucon Twp. Comp. Recreation, Open Space & Trails Plan.
610 282 1171 x 1268

Carl Dickson, Director of Parks and Recreation

Dauphin County Parks Department
Detweiler Park Master Plan
717 599 5188 x 9

Rick Smith, Manager, East Goshen Township

Park Master Plans and CDs for Milltown Dam and Hershey's Mill Dam
610 692 7171



Daniel Kerr, Manager, Limerick Township, Montgomery Co. PA

Open Space Plan Update, Parks projects, Trails Master Plan & Trail Grants
610 495 6432

Steve Norcini, Township Engineer, Radnor Township PA

Park and trail projects, trail grants
215 297 5656

Charles Fritz, Township of Bloomsburg

Walk Bike Bloomsburg Master Plan
570 784 4532

Roman Pronczak, Township Manager, Upper Saucon Township



Wissahickon Park / West Ambler Revitalization & Action Plan
610277 2400

Keith Metts, Manager, Hampden Township

Township Comprehensive Plan, Zoning Projects, other.
717 761 0119

Anthony Cucchi, Superintendent of Parks, Mercer County, NJ

Dam Site 21 Park Master Plan
609 303 0719



The SC plan for Wilson Farm Park created a 2 acre stormwater management basin that also serves as an irrigation reservoir for the park's 7 sports field. The pond also created a beautiful aesthetic element. There was no pond here previously. The pond has clay line and was built in Karst geology. It has functioned flawlessly for over a decade. This is a BPM by Simone Collins before the current terminology was widely used. This park was dedicated in 2003.

6. Additional Information

- SC firm information
- Resumes
- Stasio Resume
- Relevant Examples—SC Project Experience





Designing places of harmony and distinction

Mission Statement

Simone Collins Landscape Architecture is a planning and design firm committed to creating an ecologically enduring society.

- We inspire and educate others as we:
- Conduct careful research.
- Respect the ecological context and limits of each site.
- Build on sustainable practices of the past.
- Employ new methods prudently.
- Conserve materials and energy.
- Support local economies.
- Design biologically and culturally diverse communities.

Our work is designing places of harmony and distinction.

Firm Description

Simone Collins Landscape Architecture (SC) has a portfolio of visionary and award-winning projects in the areas of parks, trails / greenways, streetscapes, heritage, bridge design, land use and zoning, transportation, institutional / schools, commercial landscapes, and estate garden design. SC specializes in developing partnership funding strategies and public involvement programs for community projects. SC offers a full range of landscape architecture and planning services *“from conception through construction.”*

Organizational Structure

SC is a small business enterprise of nine (11) people: two principal landscape architects; a professional staff of eight landscape architects and planners; and one administrative personnel. Principals participate directly in projects through all aspects of the work and work with experienced project managers. SC principals are registered landscape architects in Pennsylvania and hold additional registrations or certificates in Delaware, Massachusetts, New York, Maryland and New Jersey. Three other SC landscape architects are registered in Pennsylvania.

Ownership

The firm was established on July 1, 1990 as a subchapter-S corporation in Pennsylvania. Peter Simone, RLA, FASLA and William Collins, RLA, ASLA are principal shareholders.

Technology

SC provides in-house digital services using the most advanced electronic hardware, software and printing tools including AutoCAD Map 2018, ArcView GIS, Adobe Creative Cloud, Microsoft Office, PowerPoint, Publisher, Act, SketchUp and other programs.

DESIGN AWARDS

2019 MONTGOMERY AWARD – Bike Pottstown, Pottstown, PA. SC was prime on the master plan and sub-consultant for construction documents, Montgomery County Planning Commission.

PRESERVATION PENNSYLVANIA AWARD IN COMMUNICATION - Delaware Canal Vision Plan, Bucks & Northampton Counties, PA.

HONOR AWARD — Delaware Canal Vision Plan, Bucks & Northampton Counties, PA., *American Society of Landscape Architects (ASLA), PA/DE Chapter*

2016 MONTGOMERY AWARD – Sustainability & Innovation Hub, Montgomery County Community College, Pottstown, PA., Montgomery County Planning Commission.

LEHIGH VALLEY PLANNING COMMISSION AWARD – Camp Olympic Park Master Plan, Lower Macungie Township, Lehigh County, PA

2014 COMMUNITY TRANSPORTATION EXCELLENCE AWARD - 10thousand Friends of Pennsylvania. - Jersey Shore Pine Creek Connector Trail, Lycoming County PA.

2011 PLANNING LEADERSHIP AWARD - Greater Valley Forge Transportation Management Association for the Sanatoga Interchange Master Land Development Plan, Montgomery County, PA

2009 MERIT AWARD – Forty Foot Pedestrian Bridge, Montgomery County, PA, *American Society of Landscape Architects (ASLA), PA/DE Chapter*

2008 REVITALIZATION AWARD – Pottstown Pedestrian Underpass, Borough of Pottstown, PA, Montgomery County Planning Commission.

MERIT AWARD – Valley Forge Corporate Center Redevelopment Plan, Lower Providence, PA, *American Society of Landscape Architects (ASLA), PA/DE Chapter*

HISTORIC PRESERVATION AWARD - Kings Bridge Rehabilitation, Somerset County, PA, *Preservation Pennsylvania*.

2008 CONCRETE BRIDGE AWARD - Forty Foot Pedestrian Bridge, Montgomery County, PA, *Portland Cement Association*.

2007 PROJECT OF THE YEAR (Over \$5 Million) - Forty Foot Road and Pedestrian Bridge, Towamencin Township, Montgomery County, PA. *American Society of Highway Engineers Delaware Valley Chapter (ASHE)*

PROJECT OF THE YEAR (Under \$5 Million) - Pottstown Pedestrian Underpass, Borough of Pottstown, Montgomery County, PA. *American Society of Highway Engineers, Delaware Valley Chapter (ASHE)*.

PRESIDENT'S AWARD FOR EXCELLENCE - PA Route 113 Heritage Corridor Plan, Montgomery / Bucks Counties, PA., *ASLA PA/DE Chapter*

SPECIAL RECOGNITION AWARD - Wilson Farm Park Master Plan and Construction, Tredyffrin Township, Chester Co., PA, *ASLA PA/DE Chapter*

HONOR AWARD - Arcadia University Campus Landscape Master Plan, Montgomery County, PA, *ASLA PA/DE Chapter*.

MERIT AWARD - South Bethlehem Greenway Master Plan, Bethlehem, PA, *ASLA, PA/DE Chapter*

2006 MERIT AWARD - Sunbury Riverfront Master Site Plan, Sunbury, PA, *ASLA, PA/DE Chapter*

2005 MERIT AWARD - University of the Science in Philadelphia Quadrangle, *ASLA, PA/DE Chapter*



- 2004 MERIT AWARD** - Molloy Tract Park Master Plan, Upper Moreland Township, Montgomery Co., PA., ASLA, PA/DE
- 2003 HONORABLE MENTION - Rail-Trail Design Recognition Awards** – Bridges/Tunnels Rehabilitation, Tohickon Aqueduct, Del. Canal State Park, PA, *Rails -To-Trails Conservancy / ASLA*
- HONOR AWARD** - Tohickon Aqueduct Rehabilitation, Delaware Canal State Park, PA, ASLA PA/DE
- 1st PLACE, NATIONAL TIMBER BRIDGE AWARD** - Rehabilitation of Existing Bridge - Tohickon Aqueduct, Delaware Canal State Park, PA, *APA Eng. Wood Assoc., FHWA*
- EXCELLENCE IN DESIGN Franklin Wood Award** - Tohickon Aqueduct Rehabilitation, Del. Canal State Park, Bucks Co., *Central Bucks AIA / Chamber of Commerce*
- MERIT AWARD** - Fisher's Park Enhancements, Towamencin Township, PA *Montgomery Co. Planning Commission Land Development Award*
- 2001 MERIT AWARD** - Towamencin Township Municipal Complex, Towamencin Township, PA, *Montgomery Co. Planning Commission Land Development Award*
- NATIONAL AWARD** - Technical Assistance to Rural Communities for innovative historic infrastructure in Pennsylvania, *USDA Forest Service*
- EXCELLENCE IN DESIGN Franklin Wood Award** - Camelback Bridge, Delaware Canal State Park, *Central Bucks AIA / Chamber of Commerce*
- MERIT AWARD** - John Potts County Park Concept Plan, Pottstown, Montgomery Co, PA; ASLA PA/DE
- MERIT AWARD** - Private Residence, Media, PA; ASLA PA/DE
- 1999 MERIT AWARD** - Delaware Water Gap Welcome Center, Monroe County, PA; ASLA PA/DE
- MERIT AWARD** - Balduini Residence / Pool, Radnor, PA; ASLA PA/DE
- 1997 MERIT AWARD** - Wissahickon Valley Trails Master Plan, Fairmount Park, Philadelphia, PA; ASLA PA/DE
- PENNSYLVANIA GOVERNOR'S AWARD** - Towamencin Village Plan, Montgomery Co., PA
- HONOR AWARD** - Towamencin Village Master Recreation Plan, Montgomery Co.; PA., ASLA PA/DE
- CURRENT TOPICS AWARD** - Towamencin Village Plan / Land Use and Design Manual, Towamencin Township, PA., *Pennsylvania Planning Association*
- MERIT AWARD** - Strawberry Fields Memorial Renovation, Fairmount Park, Philadelphia, PA., ASLA PA/DE
- EXHIBIT OF DISTINCTION** - The Wissahickon Valley Exhibit Philadelphia Flower Show, *Fairmount Park Commission*
- 1995 MERIT AWARD** - Philadelphia Museum of Art Site Maintenance Plan, Fairmount Park, Philadelphia, PA., ASLA PA/DE
- 1994 HONOR AWARD** - PW&S RR Bike Trail Master Plan, Ligonier, PA., ASLA PA/DE
- GOLD MEDAL** - Balduini Residence/Pool, *Northeast Pool and Spa Association*
- 1990 MERIT AWARD** - Elmwood Park Bandshell Renovation, Norristown, PA., *Montgomery Co. Planning Commission*

SC Successful Grant Awards



Simone Collins Landscape Architecture - Client Grant Awards List: 1993 - 2019

Client Name	Location	Type of Project	Amount	Source	Status
Loyalhanna Watershed Association	Westmoreland Co., PA	Transport / Bridge	\$ 10,000	USDA Forest Serv	Built
Friends of the Delaware Canal	Bucks Co., PA	Transport / Bridge	\$ 20,000	USDA Forest Serv	Built
Tinicum Township	Bucks Co., PA	Bridge Design	\$ 10,000	USDA Forest Serv	Built
Tinicum Township	Bucks Co., PA	Bridge Design	\$ 10,000	USDA Forest Serv	Built
Point Pleasant Community Association	Bucks Co., PA	Bridge Design	\$ 20,000	USDA Forest Serv	Built
Point Pleasant Community Association	Bucks Co., PA	Bridge Design	\$ 30,000	USDA Forest Serv	Built
Morrisville Heritage Development Corp.	Fulton Co., PA	Heritage Adaptive Reuse	\$ 30,000	USDA Forest Serv	Built
Morrisville Heritage Development Corp.	Bucks Co., PA	Heritage Adaptive Reuse	\$ 30,000	D&L Corridor	Built
Morrisville Heritage Development Corp.	Bucks Co., PA	Heritage Adaptive Reuse	\$ 30,000	USDA Forest Serv	Built
Somerset County Conservation District	Somerset Co., PA	Transport / Bridge	\$ 40,000	USDA Forest Serv	Built
Somerset County	Somerset Co., PA	Trail	\$ 105,000	PA DCNR	Built
Morrisville Borough	Bucks Co., PA	Streetscape	\$ 10,000	PA DCED	Completed
Friends of Salt Springs	Susquehanna Co., PA	Park / Rec planning	\$ 20,000	PA DCNR	Completed
Friends of Salt Springs	Susquehanna Co., PA	Park Construction	\$ 50,000	PA DCNR	Completed
Plumstead Township	Bucks Co., PA	Transport	\$ 30,000	D&L Corridor	Granted
Plumstead Township	Bucks Co., PA	Transport	\$ 10,000	National Park Serv	Granted
Upper Salford Township	Montgomery Co, PA	Park / Rec	\$ 70,000	PA DCNR	Built
Pocono Mountains Vacation Bureau	Pocono Region, PA	Environmental	\$ 5,000	Private	Completed
Pocono Mountains Vacation Bureau	Pocono Region, PA	Heritage	\$ 10,000	D&L Corridor	Completed
Pocono Mountains Vacation Bureau	Pocono Region, PA	Heritage	\$ 30,000	USDA Forest Serv	Completed
Pocono Mountains Vacation Bureau	Monroe Co., PA	Trail	\$ 15,000	PA DCED	Completed
Heritage Development Corporation	Fulton Co., PA	Heritage	\$ 11,000	PA DCED	Completed
Heritage Development Corporation	Fulton Co., PA	Heritage	\$ 15,000	USDA Forest Serv	Completed
Burnt Cabins Grist Mill	Fulton Co., PA	Heritage Rehabilitation	\$ 30,000	USDA Forest Serv	Built
Burnt Cabins Grist Mill	Fulton Co., PA	Heritage Rehabilitation	\$ 10,000	USDA Forest Serv	Built
Burnt Cabins Grist Mill	Fulton Co., PA	Heritage Rehabilitation	\$ 60,000	USDA Forest Serv	Built
Grey Towers - USDA Forest Service	Pike Co., PA	Bridge Design	\$ 30,000	USDA Forest Serv	Completed
Pocono Mountains Vacation Bureau	Monroe Co., PA	Transportation planning	\$ 50,000	PennDOT	Completed
Pocono Mountains Vacation Bureau	Monroe Co., PA	Transportation planning	\$ 60,000	USDA Forest Serv	Completed
Newtown Township	Bucks Co., PA	Streetscape	\$ 1,100,000	TEA 21	Built
Worcester Township	Montgomery Co, PA	Trail	\$ 17,500	DCNR	Completed
Upper Makefield Township	Bucks Co., PA	Streetscape Construction	\$ 550,000	TEA 21	Built
Upper Makefield Township	Bucks Co., PA	Streetscape Design	\$ 60,000	DCNR	Completed
Southern Alleghenies Conservancy	Somerset Co., PA	Park / Rec	\$ 20,000	DCNR	Completed
Southern Alleghenies Conservancy	Somerset Co., PA	Bridge Construction	\$ 595,000	TEA 21	Built
Southern Alleghenies Conservancy	Somerset Co., PA	Bridge Construction	\$ 240,000	FHWA	Built
Shawnee Institute	Monroe Co., PA	Trail Master Plan	\$ 50,000	DCNR	Completed
City of Philadelphia	Philadelphia, PA	Trail planning	\$ 30,000	SRHA	Completed
Worcester Township	Montgomery Co., PA	Trail planning	\$ 17,500	DCNR	Completed
Pocono Environmental Education Center	Pike Co., PA	Campus improvements	\$ 450,000	DCNR	Built
Pocono Environmental Education Center	Pike Co., PA	Campus improvements	\$ 121,600	DEP GGI	Built
Borough of Pottstown	Montgomery Co., PA	Walkway / Underpass	\$ 260,000	TEA 21	Built
Borough of Pottstown	Montgomery Co, PA	Walkway / Underpass	\$ 54,000	DCNR	Built
Point Pleasant Community Association	Bucks Co., PA	Transport / Bridge	\$ 20,000	DCED	Completed
Borough of Yardley	Bucks Co., PA	Streetscape	\$ 850,000	TEA 21	Completed
Borough of Yardley	Bucks Co., PA	Streetscape	\$ 65,000	DCNR	Completed
Borough of Yardley	Bucks Co., PA	Streetscape	\$ 30,000	DCED	Completed
City of Bethlehem	Lehigh Co., PA	Trail construction	\$ 800,000	TEA 21	Built
City of Bethlehem	Lehigh Co., PA	Trail construction	\$ 200,000	DCNR	Built
East Fallowfield Township	Chester Co., PA	Park Construction	\$ 250,000	DCNR	Built
City of Sunbury, PA	Northumberland Co, PA	Park Planning	\$ 175,000	DCNR	Built
City of Sunbury, PA	Northumberland Co, PA	Park Construction	\$ 1,000,000	TEA 21	Built
Smithfield Township	Monroe Co., PA	Trail Construction	\$ 779,000	DRITBC	Built
Smithfield Township	Monroe Co., PA	Trail Design / Constr.	\$ 40,000	DCED	Built
Solebury Township	Bucks Co., PA	Landscape / trail	\$ 1,750,000	DRITBC	Built
Solebury Township	Bucks Co., PA	Park Construction	\$ 250,000	DCNR	Built
Lansdowne Borough	Delaware Co., PA	Park / Trail	\$ 100,000	DCNR	Built
Bedford Borough	Bedford Co., PA	Park / Trail	\$ 48,000	DCNR	Completed
Schuylkill County, PA	Schuylkill Co., PA	Park Construction	\$ 363,000	DCNR	Built



Client Name	Location	Type of Project	Amount	Source	Status
Lehman Township	Pike Co., PA	Park Acquisition	\$ 200,000	DCNR	Completed
Lehman Township	Pike Co., PA	Park Master Plan	\$ 35,000	DCNR	Completed
Lehman Township	Pike Co., PA	Park Equipment	\$ 5,000	DCED	Completed
Lehman Township	Pike Co., PA	Park Construction	\$ 20,000	DCNR	Built
Lehman Township	Pike Co., PA	Park Construction	\$ 100,000	DCNR	Built
Lehman Township	Pike Co., PA	Park Construction	\$ 450,000	DCED / Gaming	Built
City of Bethlehem	Northampton Co., PA	Park Construction	\$ 200,000	DCNR	Built
Washington Township	Schuylkill Co., PA	Park Acquisition	\$ 64,600	DCNR	Acquired
Washington Township	Schuylkill Co., PA	Park Master Plan	\$ 10,000	DCNR	Completed
Towamencin Township	Montgomery Co., PA	Transport / Land use	\$ 40,000	EGGS / DVRPC	Completed
Lehman Township	Pike Co., PA	Transport / Land use	\$ 160,000	PCTI / PennDOT	Completed
Lehman Township	Pike Co., PA	Recreation Plan	\$ 30,000	DCNR	Completed
Hatfield Township and Hatfield Borough	Montgomery Co., PA	Mobility / Econ Devel.	\$ 27,500	PennDOT	Granted
City of Lebanon	Lebanon Co., PA	Park / Stormwater	\$ 500,000	PennVEST	Built
Towamencin Township	Montgomery Co., PA	Park Construction	\$ 300,000	DCNR	Built
Limerick Township	Montgomery Co., PA	Trail Implementation	\$ 150,000	DCNR-C9P2	Built
Limerick Township	Montgomery Co., PA	Park / Trail Planning	\$ 25,000	DCNR-C9P2	Completed
Limerick Township	Montgomery Co., PA	Trail Construction	\$ 250,000	DCED	Built
Limerick Township	Montgomery Co., PA	Adaptive Reuse	\$ 18,000	DCED	Granted
Solebury Township	Bucks Co., PA	Gateway Trail Plan	\$ 981,000	PennDOT-TAP	Built
Solebury Township	Bucks Co., PA	Gateway Trail Plan	\$ 500,000	DCNR-C9P2	Built
Solebury Township	Bucks Co., PA	Gateway Trail Plan	\$ 110,000	DCED - GTRP	Built
Abington Township	Montgomery County	Walk Park Train Abington	\$ 75,000	DVRPC (PCTI)	Completed
Exeter Township	Berks Co., PA	Comp Recreation Plan	\$ 30,000	DCED / Gaming	Granted
Rachor Township	Delaware Co., PA	Trail Construction	\$ 1,000,000	PennDOT-TAP	Granted
Rachor Township	Delaware Co., PA	Trail Construction	\$ 500,000	DCNR-C9P2	Granted
Rachor Township	Delaware Co., PA	Trail Construction	\$ 225,000	DCED	Granted
Limerick Township	Montgomery Co. PA	Trail Construction	\$ 970,000	PennDOT-TAP	Granted
Abington Township	Montgomery Co. PA	Trail Construction	\$ 450,000	PennDOT-TAP	Granted
Abington Township	Montgomery Co. PA	Trail Construction	\$ 90,000	DCNR-C9P2	Granted
East Hanover Township	Dauphin County, PA	Township Trail Master Plan	\$ 25,000	DCNR-C9P2	Completed
Whitpain Township	Montgomery Co. PA	Park Master Plan	\$ 25,000	DCNR-C9P2	Completed
Whitpain Township	Montgomery Co. PA	Park Master Plan	\$ 25,000	DCED - CFA	Completed
Limerick Township	Montgomery Co. PA	Park Master Plan	\$ 25,000	DCNR-C9P2	Completed
Plumstead Township	Bucks Co., PA	Open Space Acquisition	\$ 325,000	DCNR-C9P2	Completed
Lehman Township	Pike County, PA	Park Development	\$ 25,000	Pike County OS	Granted
Lehman Township	Pike County, PA	Historic Site / Park Planning	\$ 275,000	FHWA-FLAP	Granted
Abington Township	Montgomery County, PA	Trail Construction	\$ 775,000	PennDOT-TAP	Granted
Chadds Ford Township	Delaware Co., PA	Trail Construction	\$ 1,000,000	PennDOT-TAP	Granted
Solebury Township	Bucks Co., PA	Park Development	\$ 1,000,000	PennDOT-TAP	Granted
Solebury Township	Bucks Co., PA	Park Development	\$ 250,000	DCNR-C9P2	Granted
Solebury Township	Bucks Co., PA	Trail Construction	\$ 160,000	DCED -GTRP	Granted
East Goshen Township (co-author)	Chester Co., PA	Park Const. (milltown)	\$ 500,000	DCNR-LWCF	Granted
East Goshen Township (co-author)	Chester Co., PA	Park Const. (milltown)	\$ 65,000	DCED -GTRP	Granted
D&L Corridor / Delaware Canal 21	Northampton, Bucks Co, PA	Del. Canal Vision Study	\$ 225,000	Wm Penn Found	Completed
Heritage Conserv./Delaware Canal 21	Northampton, Bucks Co, PA	Del. Can. Stormwater Study	\$ 85,000	Wm Penn Found	Completed
Heritage Conserv./Delaware Canal 21	Northampton, Bucks Co, PA	Del. Can. Stormwater Study	\$ 85,000	DCNR-C9P2	Completed
D&L Corridor / Delaware Canal 21	Northampton, Bucks Co, PA	Del. Canal Water/Trail Feas	\$ 180,000	Wm Penn Found	Granted
Delaware Canal 21	Northampton, Bucks Co, PA	Del. Canal Water/Trail Feas	\$ 170,000	DCNR-C9P2	Granted
Spring Township	Perry County, PA	Park Development	\$ 270,000	DCNR-C9P2	Granted
Bethel Township	Delaware Co., PA	Open Space Acquisition	\$ 10,000	PECO	Granted
Exeter Township	Berks Co., PA	Park Master Plan	\$ 50,000	DCNR	Granted
Newtown Township	Delaware Co., PA	Greer Park Master Plan	\$ 35,000	DCNR	Granted
Newtown Township	Delaware Co., PA	Greer Park Master Plan	\$ 35,000	DCED	Granted
Camp Hill Borough	Cumberland County, PA	Streetscape Construction	\$ 700,000	DCED - MTF	Granted
Whitpain Township	Montgomery County, PA	Park Construction	\$ 1,429,784	DCNR - LWCF	Granted
Rachor Township	Delaware County, PA	Trail Construction	\$ 500,000	DELCO Greenways	Granted
Towamencin Township	Montgomery County, PA	Park Master Plan	\$ 25,000	DCNR - C9P2	Granted
Limerick Township	Montgomery County, PA	Park Construction	\$ 200,000	DCNR - C9P2	Granted
			Total	\$ 27,127,484	

This is a listing of successful grant applications authored by Simone Collins through 2019.



WILLIAM COLLINS, RLA, ASLA

Vice President

EXPERIENCE SUMMARY

William Collins has practiced landscape architecture since 1975, and served with SC since 1992 as a principal-in-charge of transportation, bridge, transit, greenway, "context-sensitive design" and planning projects. Bill has extensive experience in the FHWA process for trails, highways, bridges and enhancements projects in collaboration with engineering teams – including managing environmental assessment tasks and compliance requirements for public projects. He specializes in heritage projects that focus on historic structures and cultural landscapes – including bridges, aqueducts, mills, canals, railroads and other early industries. His hands-on preservation experience features years in professional timber framing, using traditional mortise and tenon joinery construction. Bill has authored scores of successful funding strategies for government and private sector partners and regularly serves as a community involvement team leader on public projects. His expertise in verbal, written and graphic communications benefits every project. Bill's designs have won over 22 federal, state and regional awards and are recognized for their innovations and smart syntheses of practicality and creativity.

SELECTED PROJECTS – Transportation: * indicates PennDOT projects

- **Forty Foot Road Pedestrian Bridge** * Design/Documentation/Construction Observation, *SR 63, Towamencin Twp., PA*
- **Tohickon Aqueduct Rehabilitation** – Design/Documentation/Observation, *Del. Canal State Park, Point Pleasant, PA*
- **Pottstown Pedestrian Underpass** * Adaptive Design/Envir. Clearance/Documentation/Observation, *Pottstown, PA*
- **Kings Covered Bridge Rehabilitation** * Design/Envir. Clearance/Documentation/Observation, *Somerset County, PA*
- **Camelback Bridge Rehabilitation** – Design/Funding Strategy/Documentation, *Del. Canal State Park, Solebury Twp, PA*
- **South Bethlehem Greenway** * Master Plan/Funding Strategy/Design/Documentation/Observation (4 phases), *PA*
- **Asa Packer Park / Station Area Streetscape** * Concept Design / Documentation, *Jim Thorpe, Carbon County, PA*
- **Linn Run King Post Truss Bridges** – Design/Documentation/Construction, *Forbes State Forest, Westmoreland Co., PA*
- **Lansdowne Greenway Trail** * Master Plan/Design/Documentation, *Lansdowne, PA*
- **Allegheny Highlands Trail** * Master Plan/Envir. Clearance, *Somerset Co., PA*
- **PW&S Railroad Bike Trail** – Master Plan, *Forbes State Forest, Westmoreland Co., PA*
- **Burnt Cabins Grist Mill** – Master Plan/Funding Strategy/Design/Documentation/Observation, *Fulton Co., PA*
- **Schuylkill Valley Metro** – Feasibility/MIS-DEIS Study, *SEPTA/BARTA, Philadelphia to Reading, PA*
- **Minisink Greenway Trail** – Concept/Design/Documentation/Construction Observation, *Smithfield Township, PA*
- **Canal Park Pedestrian Bridge** - Concept/Funding/Design/Documentation/Construction Observation, *Solebury Twp, PA*
- **Delaware River Water Trail Signage System** – Master Plan, *Del. Riv. Greenway Partnership, Hancock, NY- Trenton, N*
- **Bushkill Village Transportation/Land Use/Traffic/ Trail Comp. Plan*** Delaware Water Gap Nat. Rec. Area, *Pike Co, PA*

SELECTED PROJECTS – Environmental

- **Bear Creek Preserve** – Public Use Plan, Natural Lands Trust, *Bear Creek, PA*
- **Pocono Environmental Education Center** – Campus Master Plan / Funding / Design/documents green improvements
- **Stroud Preserve** – Public Use Plan, Natural Lands Trust, *Chester County, PA*
- **Cheslen Preserve** – Public Use Plan, Natural Lands Trust, *Chester County, PA*
- **Lake Wallenpaupack Visitor Center** – Master Plan for site and structure, *Pike County, PA*
- **Elmwood Zoo Campus** – Master Plan, *Norristown, PA*
- **Lacawac Sanctuary** – Master Site / Feasibility Study for development, *Wayne County, PA*
- **Green Office Renovation** – Simone Collins Headquarters, *Norristown, PA*

EDUCATION Ohio State University, Bachelor of Science in Landscape Architecture, 1975

REGISTRATION Landscape Architect – Pennsylvania (License # 001276-E)

AFFILIATIONS American Society of Landscape Architects (ASLA)
American Society of Highway Engineers (ASHE)
Timber Framers Guild of North America (TFGNA)



SARAH R. LEEPER, RLA

Landscape Architect / Project Manager

Experience Summary:

Sarah Leeper is a project manager and accomplished designer with many SC awards to her credit. Sarah has a wide variety of project experience, including: greenway / trail planning and design, urban/ campus, recreation and residential. Her technical skills include all phases of analysis, design, documentation and management – ranging from large-scale master site planning, to detailed site design, to construction documents, PennDOT ECMS project management, and multi-media graphic presentations. Sarah's notable assignments include master planning and "arts overlay" plan, plus four phases of the South Bethlehem Greenway design and construction documents; the City Park Bandshell renovation of the historic structure, amphitheater and pond in Reading; the Limerick Community Park Master Plan; and the Adam's Residence in Gladwyn.

Employment History:

2003 – Present	Simone Collins, Norristown, PA
2001 – Summer Internship	TrueGreen LandCare, Bryn Athyn, PA

Selected Projects:

- **Mercer Co. NJ Dam 21 Master Plan**, Mercer County, NJ
 - **Hershey Dam Park & Milltown Dam Park Master Plan & CD's**, East Goshen Township, PA
 - **Newtown Meadow Preserve Master Plan**, Newtown Township, PA
 - **Variety, the Children's Charity of the Delaware Valley Master Plan**, Worcester Township, PA
 - **Private Residence**, East Goshen, PA
 - **Kelly House Master Plan**, Philadelphia, PA
 - **Reservoir Park Master Plan**, Harrisburg, PA
 - **Wissahickon Park Master Plan**, Whitpain Township, PA
 - **Limerick Community Park Master Plan**, Limerick Township, PA
 - **Mt Penn Preserve Master Plan**, Reading, PA
 - **Menlo and Lenape Park Master Plan**, Perkasie Borough, PA
 - **Garrett Williamson Master Plan**, Newtown Township, PA
 - **South Bethlehem Greenway Master Plan and CDs** * Bethlehem, PA
 - **SRDC DuPont Crescent Trail** * Philadelphia, PA
 - **King's Covered Bridge Rehabilitation CDs and Site Design** * Somerset County, PA
 - **Private Residence**, Gladwyne, PA
 - **City Park Master Plan and Phase 1 CD's**, Reading, PA
 - **Minisink Greenway CD's**, Smithfield, PA
 - **Pocono Environmental Education Center Site design and CDs**, Pike County, PA
 - **Lehman Township Community Park Master Plan and CDs**, Pike County, PA
 - **Villanova University Planning and CD's**, Villanova, PA
- * indicates PennDOT projects*

Education:

University of Georgia, Athens, GA
Bachelors of Landscape Architecture: 2003

Awards:

2003 Honor Award for Excellence in the Study of Landscape Architecture: ASLA



ANITA H. NARDONE, PE

Civil Engineer / Project Manager

Experience:

Anita Nardone is a professional engineer with extensive experience in the land development process – with emphasis on site planning, stormwater design, project administration, permitting/ approvals and construction management.

She has worked intensively on green infrastructure initiatives for the City of Philadelphia that feature pedestrian accessibility integrated with stormwater BMP engineering, multi-modal transportation and smart land planning.

Anita is a skilled communicator with clients, local stakeholders, technical consultants, municipal planners and agency managers that have resulted in partnership successes across a broad range of projects over her 20-year career.

Her project experience includes higher education campuses, School District of Philadelphia sites, industrial re-development sites, Philadelphia Water Department green stormwater infrastructure projects, stormwater retrofit projects, multi-family re-development sites and recreation facilities.

Anita has led a transportation management coalition to maximize the efficiency of local transportation networks that incorporate multi-modal features to achieve “complete streets,” walkable communities and trails.

Employment History:

2021-Present	Simone Collins, Norristown, PA
2018-2020	Greater Valley Forge TMA, King of Prussia, PA
2013-2018	Dawood Engineering, Inc., King of Prussia, PA
2005-2013	Hunt Engineering Company, Malvern, PA
1985-1993	Purcell Associates, Glastonbury CT

Selected Projects:

- **West Philadelphia High School**, Philadelphia, PA
- **St. Joseph’s University - Post Learning Commons**, Philadelphia, PA
- **St. Joseph’s University – Villiger Hall Student Residence**, Philadelphia, PA
- **Nicetown Court Housing**, Philadelphia, PA
- **PWD Green Stormwater Infrastructure (GSI) Survey Management**, Philadelphia, PA
- **Stockwell Elastomerics New Warehouse**, Philadelphia, PA
- **Westmoreland County Transportation Center Renovation**, Greensburg, PA
- **Lower Merion Township-TDM Revisions to Zoning & SALDO Ordinances**, Ardmore, PA

Education: University of Connecticut, B.S. Civil Engineering, 1984
Fairfield University, Bachelor of Arts, 1984
5-year dual degree program

Registrations: Pennsylvania PE078522



Emma Haley

Landscape Architect

Experience Summary:

Emma Haley is experienced on a variety of project types including trail planning and design, master site planning, and public park design. Her work has ranged from concept planning to design development and construction documentation. Prior to Emma's experience at Simone Collins, she was with the engineering consulting firm AKRF, Inc., in Philadelphia. There, she completed green stormwater infrastructure designs, transportation improvements, stream restorations, park master plan designs, and playground designs. She has completed construction documents, cost estimates, and produced illustrative graphics for plan renderings, photo simulations, manuals and guides.

Emma is a graduate of Jefferson University (formerly Philadelphia University) with a Bachelor of Science in Landscape Architecture with the following achievements:

- The 2015 PA/DE ASLA Honor Award
- The 2015 LAF Olmstead Scholar Nominee (Undergraduate)

Employment History:

2021 – Present	Simone Collins – Norristown, PA
2015 – 2021	AKRF, Inc. – Philadelphia, PA
2014 – Internship	AKRF, Inc. – Philadelphia, PA
2013 – Summer Internship	HJA Design Studio – Stuart, FL

Selected Projects:

- **Southern Park, DDs & CDs**, New Castle County, DE
- **Percy Ruhe Park Master Plan**, Allentown, PA
- **Wissahickon Park, DDs & CDs**, Whitpain Township, PA
- **Lehman Township Park Phase 2 CDs**, Lehman Township, PA
- **Add B. Anderson School CDs**, Philadelphia, PA
- **Michael J Petrides School DDs & CDs**, Staten Island, NY
- **MulDer Square Transportation Improvement Project DDs & CDs**, Harrisburg, PA
- **41st & Lancaster GSI Improvements Package**, Philadelphia, PA
- **Camp Curtin, DDs & CDs**, Harrisburg, PA
- **South Allison Hill, DDs & CDs**, Harrisburg, PA
- **Millersville Post Office Pond & Stream Restoration**, Millersville, MD
- **The Link Master Plan**, City of New Rochelle, NY
- **Conestoga Playground & Park, DDs & CDs**, Philadelphia, PA
- **37th and Mount Vernon Park, DDs & CDs**, Philadelphia, PA
- **Lanier Park, DDs & CDs**, Philadelphia, PA

Education:

Jefferson University, Philadelphia, PA
Bachelor of Landscape Architecture: 2015



Bryce Brucker

Landscape Architect

Experience Summary:

Bryce Brucker graduated from the Pennsylvania State University with a Bachelor of Landscape Architecture degree. His academic involvement and achievements include:

- Veronica Burns Lucas Travel Award
- Landscape Architecture Student Society
- LAbash 2018 Entertainment Committee

Before his current employment, Bryce worked in high-end residential design, seeing projects go from initial sketches to finished product. His interest in designing for communities brought him to Simone Collins. In his spare time, Bryce enjoys reading, expressing his creativity, and traveling.

Employment History:

2022 – Present	Simone Collins Landscape Architecture– Norristown, PA
2021 – 2022	Liquid Design – Medford, NJ
Jun 2019	Western Pennsylvania Conservancy – Mill Run, PA
Jan 2019	PSU Musser Gap to Valleylands Project – State College, PA
2017 – 2018	Fern Valley Nursery – Butler, PA

Selected Projects:

- **New Castle Southern Park**, New Castle County, DE
- **Conodoguinet Creek Greenway**, Cumberland County, PA
- **K.O.P Moore Road Trail**, King of Prussia, PA
- **Upper Macungie Township Connectivity Plan**, Upper Macungie Township, Lehigh County, PA

Education:

- Pennsylvania State University, State College, PA, Bachelor of Landscape Architecture, 2020
- Education Akademie für International Building (A.I.B), International Design Education, Bonn, Germany, 2019

Goal To build a strong community by increasing the total well-being of individuals by helping them help themselves through the wise use of leisure time; and providing organized recreational activities and facilities allowing for spontaneous recreational pursuits.

Education

Masters of Education Degree in Sport and Recreation Administration, 2000
Temple University, Philadelphia, PA

Bachelor of Science Degree in Recreation Management, 1988
Lock Haven University, Lock Haven, PA

Experience

July 1997 - Present: **DIRECTOR OF PARKS AND RECREATION**

Upper Moreland Township, Department of Parks and Recreation, 117 Park Avenue, Willow Grove, PA 19090
Serve as Department Head managing all departmental offerings on a daily basis. Included within the Parks and Recreation Department are two divisions: Parks/Open Space Maintenance and Recreation. I am currently resurrecting our third division, the Adult evening School. I set the vision for the department, put the people in place and provide them the means necessary for success. Our Parks Division consists of 20 parks and over 280 acres and open areas. Four Large community parks, 12 neighborhood parks, four parklets, open space, street trees, and other waterways comprise our parks division. We feature picnic groves, various courts and fields (lit and unlit), an historic farm preservation complex, sport complexes, roller hockey rinks, dog parks, and other ancillary facilities serving the needs of Upper Moreland. We are planning for the conversion of turf fields to synthetic fields to aid our park system. Our recreation division provides a variety of organized programs for people of all ages and abilities. Our opportunities include educational, wellness, sport leagues, summer camps, large special events, arts/crafts, and other programs. We provide programs for the young and young at heart. My position demands an innovator who works within the team structure to achieve departmental success while focusing on community partnerships and investigating creative financial opportunities.

January 1995 - July 1997: **DIRECTOR OF PARKS AND RECREATION**

Lower Providence Township 100 Parkland Drive, Eagleville, PA 19403 and
Medford Township, 17 N. Main Street, Medford, 08055 NJ

Served as Department Head overseeing and administering all departmental offerings. In Medford, I served as the inaugural Director of Parks and Recreation. The position was created in 1994 to merge the current recreation department with a new parks division. My role was to put the people in place to meet that goal. Additionally, I spearheaded the development of over 210 acres of newly acquired park property to add to our existing facilities. Through various strategic meetings we created two parks, one passive and one active to help meet the needs of the community. I reorganized the entire department including the addition of the parks division. I created new policies; completely reorganized the department's organization system, computerized the department, and prepared and received large NJ state grants and low interest state loans. In 1996, I accepted the Lower Providence (Montgomery County, PA) Director position. Shortly after accepting that position, the Upper Moreland Director position became available and I was selected as Director.

August 1988 - January 1995: **RECREATION PROGRAM COORDINATOR**

Upper Moreland Township, Department of Parks and Recreation, 117 Park Avenue, Willow Grove, PA 19090
Organized and administered all recreational programs and events. Duties included: supervision of over 80 seasonal employees, preparation of program budgets, administration of a complete adult sports program consisting of 14 leagues with over 165 teams, summer camps, promotions, fund raising activities, youth classes and leagues, after-school intramurals, grant applications, facility scheduling, Senior Citizen Club with over 900 members, trips and special events, worked with community groups and civic organizations, prepared newsletters and brochures, communications with officials, tournaments, prepared reports and evaluations, engaged in public relations.

Other Experiences

1993 - Present: Willow Grove Charities, Willow Grove, PA 19090

EXECUTIVE COMMITTEE MEMBER: serve on the board which promotes fund raising to assist those in need in the greater Upper Moreland area. A charity that truly provides the funds to help people overcome very difficult times.

2011: Willow Grove 300 Tri-centennial Board

EXECUTIVE COMMITTEE MEMBER: served on the board which organized the Township 300th anniversary. I helped plan, administer, and organized over 110 events which were offered over a 45 day period.

1990 – 2010: Pennsylvania Recreation and Parks Society, District III Executive Board

PRESIDENT, PART PRESIDENT, MEMBER-AT-LARGE: Served on Executive Boards and assisted Boards regarding policy making, plan workshops, schedule entertainment, prepare programs, create the quarterly newsletter, and provide information for all D-III members.

1999 – Present: Simone Jaffe Collins Landscape Architecture

CONSULTANT – RECREATION PLANNER: assist the firm in the creation of comprehensive plans and multiple park design projects. Responsible for research, planning, recommendations, and maintenance concepts of large upscale park projects.

1999 – 2000: Pennsylvania Recreation and Parks Society

ANNUAL STATE CONFERENCE CO-CHAIRPERSON: responsible for soliciting a volunteer committee to assist with the state conference, solicited funding from various external sources, administration of the event which attracted over 1,000 members (largest in Pennsylvania history), and oversee all aspects of the 2000 conference.

1998 – 2008: Upper Moreland High School

TEEN INITIATIVE: assist the Upper Moreland High and the community by providing opportunities to teens in the Upper Moreland area. Member of the committee to research information, programs, and provide awareness of such events.

1997 – 1998: Pennsylvania Recreation and Parks Society

ANNUAL STATE CONFERENCE COMMITTEE – ENTERTAINMENT CHAIR: planned, organized, and administered all entertainment aspects of the conference (853 attendees).

Memberships and Certifications

2004 - 2006: Board of Directors, PA Recreation and Park Society, Inc.

2002 and 2006: Recipient of “Presidential Citation” awarded by the PA Recreation and Park Society, Inc.

2000 - 2009: Certified Playground Safety Inspector (CPSI)

2000 - 2007: Kiwanis International Member

1990 - Present: Certified Park and Recreation Professional (CPRP)

1988 - Present: National Recreation and Parks Association (NRPA)

1988 - Present: Pennsylvania Recreation and Parks Society, Inc. (PRPS)

1988 - Present: American Parks and Recreation Society (APRS)

1989 - Present: Amateur Softball Association, Softball Official (ASA)

1986 - Present: Sigma Pi International Fraternity

Special Skills

Thorough knowledge of Microsoft Word, Excel, Powerpoint, Word Perfect, Desk Top Publishing programs, System Administrator for Parks & Recreation Department computer system, Active-Net Recreational Software, Possession of a Commercial Drivers License - Passenger Bus with Air Brakes.

References

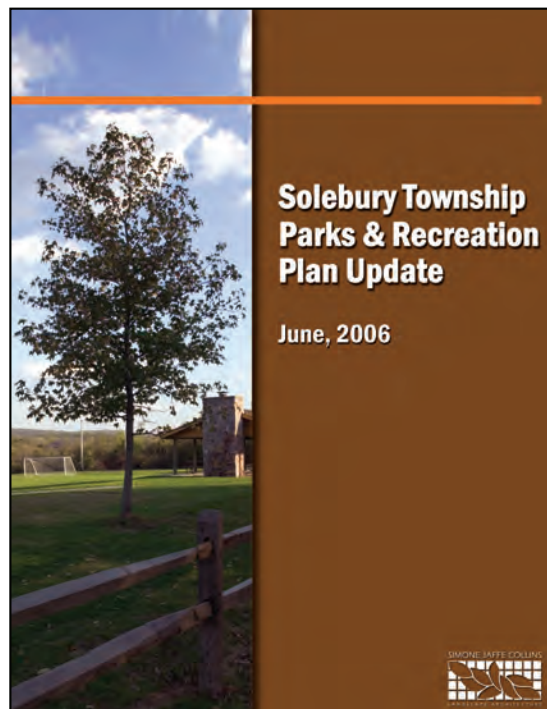
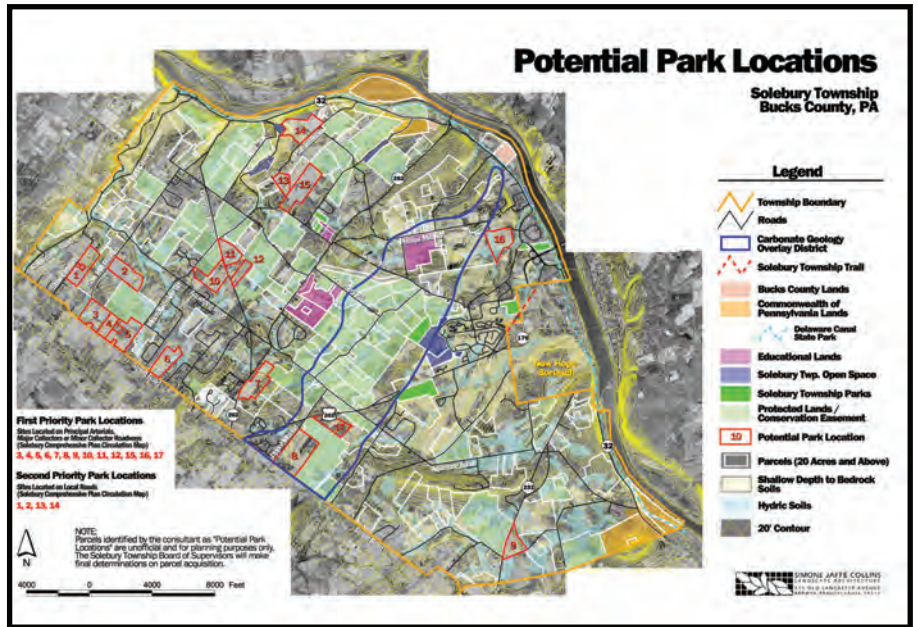
Contact information enclosed

Solebury Township Parks and Recreation Plan

Solebury Township, Bucks County, Pennsylvania

Park Design Master Planning

Simone Collins was retained by Solebury Township to examine its current and future recreational needs and develop a comprehensive Parks and Recreation Plan. SC conducted a physical inventory of its current and potential park sites, and a statistically valid telephone survey to determine a Level of Service (LOS) for active recreational facilities in conformance with the National Park and Recreation Association's (NRPA) current standards. These results were verified through other survey methods and key organization interviews to ensure that the township recreational needs will be well served for the next two decades.

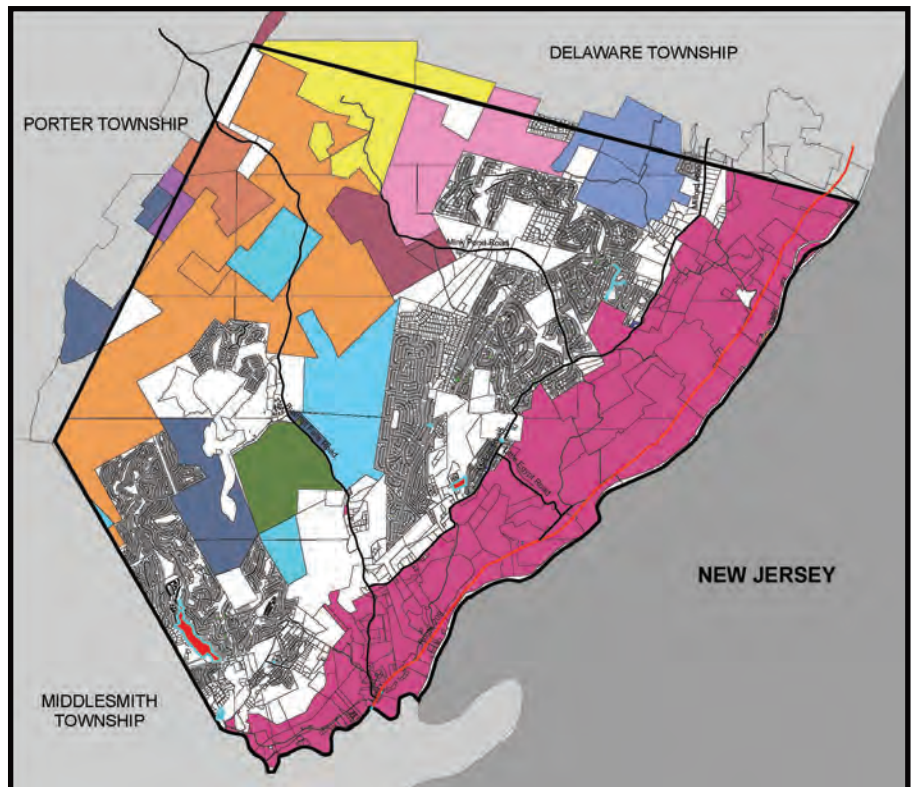
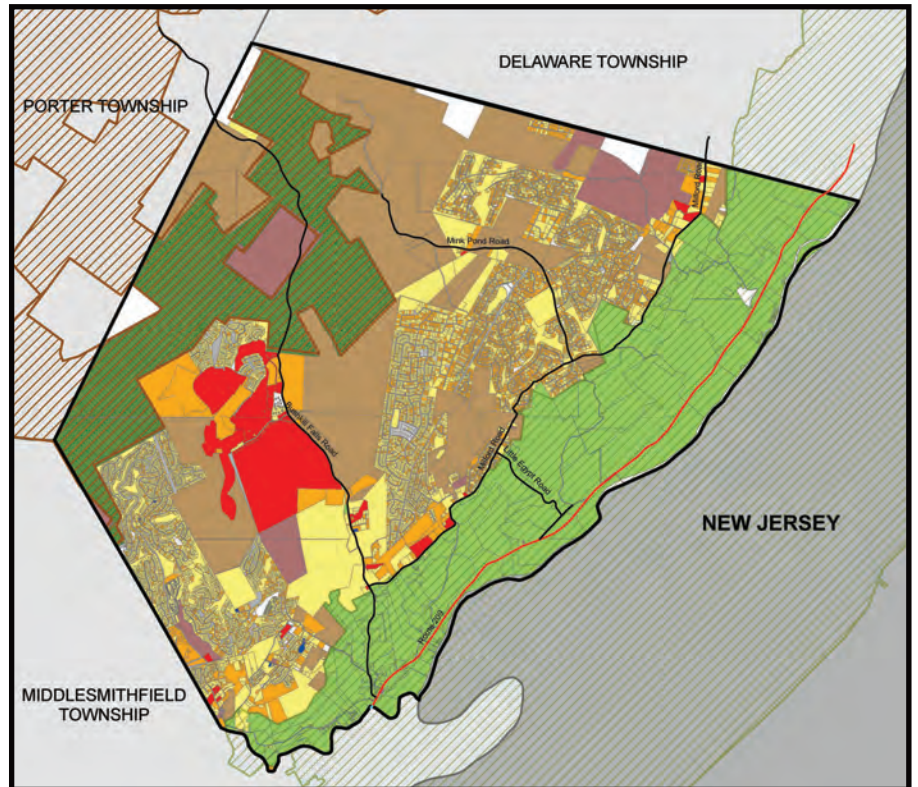


Lehman Township Parks & Recreation Open Space Plan

Pike County, Pennsylvania

Community Involvement Recreation Planning

Simone Collins served as landscape architects and planners to prepare the Lehman Township Open Space and Recreation Plan in Pike County, PA. SC assessed existing recreation resources and community needs, and identified potential open space parcels for possible future acquisition. The SC plan identified targets state and county funding.

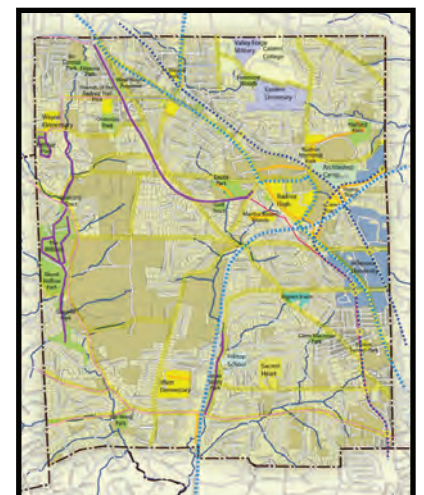
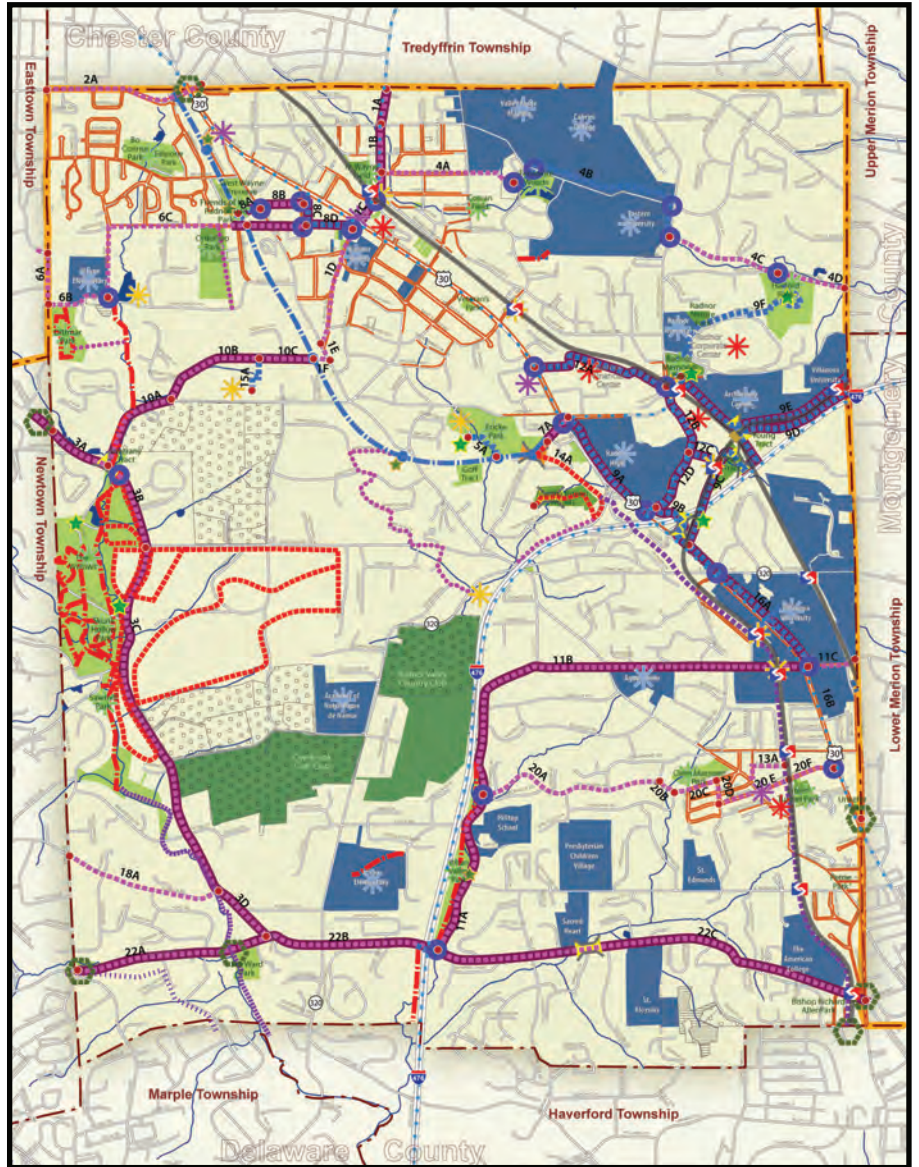


Radnor Greenways & Open Space Network Plan

Radnor Township, Delaware County, Pennsylvania

Open Space Planning Trail Planning

Simone Collins was recently selected to prepare the Radnor Township Greenways and Open Space Network Plan. The plan will seek to interconnect Radnor's extensive park system with a series of on and off-road trails. The system will also seek to connect to the communities schools, employment centers and villages. The planning process will focus on frequent and detailed public participation with the community and other stakeholders. Traffic Planning and Design Inc. will assist SC on this project since there will be many motor vehicle compatibility issues to be addressed, especially on the municipality's historic, winding roads.



Revitalization and Action Plan

Whitpain Township, Montgomery County, Pennsylvania

Master Planning Community Involvement Park Design

Simone Collins led an interdisciplinary team to develop the Revitalization and Action Plan for the West Ambler neighborhood of Whitpain Township. The project area includes a residential / industrial neighborhood that abuts a 35-acre Superfund site that was remediated by the EPA. SC led the public participation process including four well-attended public meetings and a series of committee meetings. Many of the recommendations of the Action Plan originated with the community. The Action Plan has three components:

1. Revitalization of the West Ambler neighborhood;
2. Adaptive reuse of the asbestos Superfund site;
3. Implementation informed by the stormwater management / flood control plan being completed by the Temple University Center for Sustainable Communities.

The SC team completed a market study for the neighborhood exploring the potential for residential infill, and SC completed a concept plan for the Wissahickon Park that will restore a key piece of green township infrastructure. The park plan was developed in close coordination with EPA. The Neighborhood Revitalization Plan includes a funding strategy for a multi-year implementation program of streetscape and neighborhood improvements.

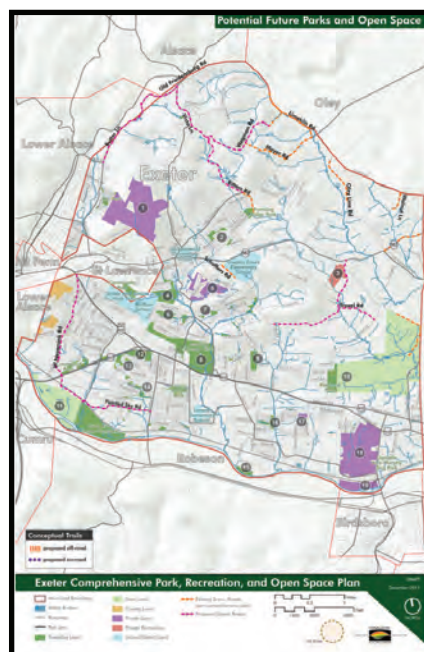


Exeter Township Comprehensive Park, Recreation & Open Space

Berks County, Pennsylvania

Trail/Greenway Master Planning Park Design

Simone Collins is developing a Comprehensive Park, Recreation and Open Space Plan for Exeter Township. SC is evaluating the Townships inventory of 7 parks and 1 community center that comprise over 917 acres. For some park facilities, SC is recommending incremental improvements. Other facilities will require a completely new master plan. Exeter's plan will also include conceptual alignments for a Township-wide trail system. Major obstacles in the Township include the Rt. 422 corridor and the Norfolk Southern Railroad line along the Schuylkill River. Strategies for linking to the existing Schuylkill River Water Trail will also be a part of the plan. SC also authored the successful grant application to the PA Department of Community and Economic Development that is partially funding the plan. The plan will be completed early in 2018.



Towamencin Park System Evaluation & Recommendations

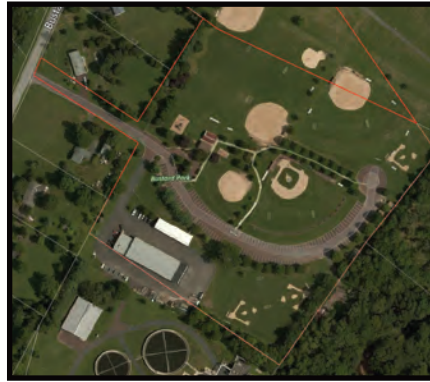
Towamencin Township, Montgomery County, Pennsylvania

Park Design

Towamencin's existing 259 acre park system continues to be one of the most important quality-of-life amenities in the community. The successful park system is a "victim" of its own success! Many of the well-used facilities, are in need of replacement or refurbishment. Additionally, as the Township continues to grow, there is additional resident demand in both the number and types of facilities available.

Simone Collins Landscape Architecture undertook a systematic evaluation of the Township's 11 park facilities. For each location, SC evaluated conditions and, in collaboration with the Township's Park and Recreation Board, created a menu of proposed improvements at each facility, along with cost estimates for construction.

SC also developed a township-wide priority ranking along with ranked items at each park and open space site. The plan was developed over a six month period on a very tight budget and completed in October 2020.



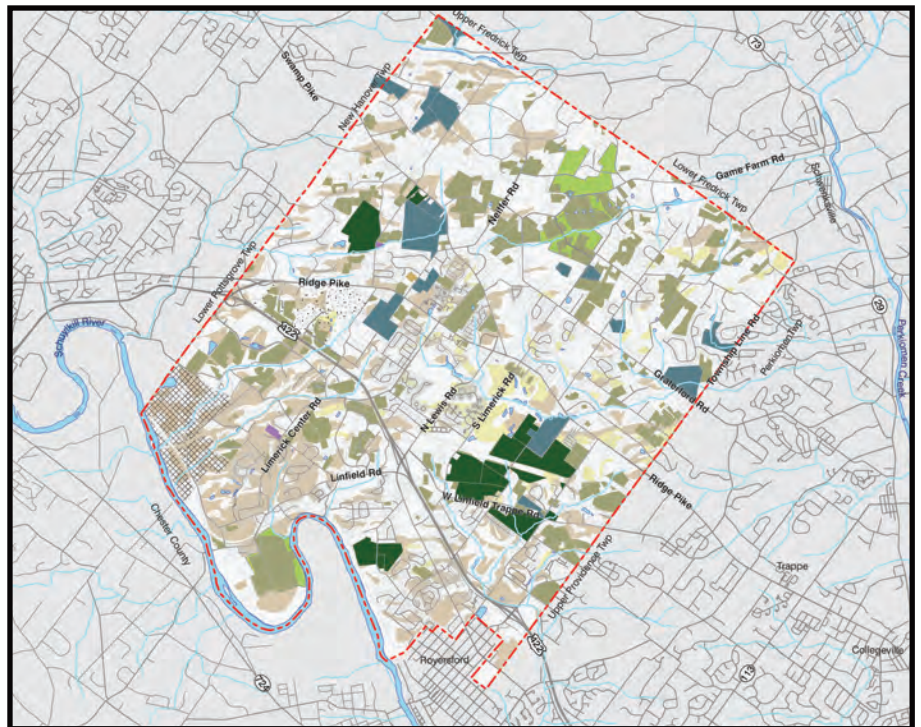
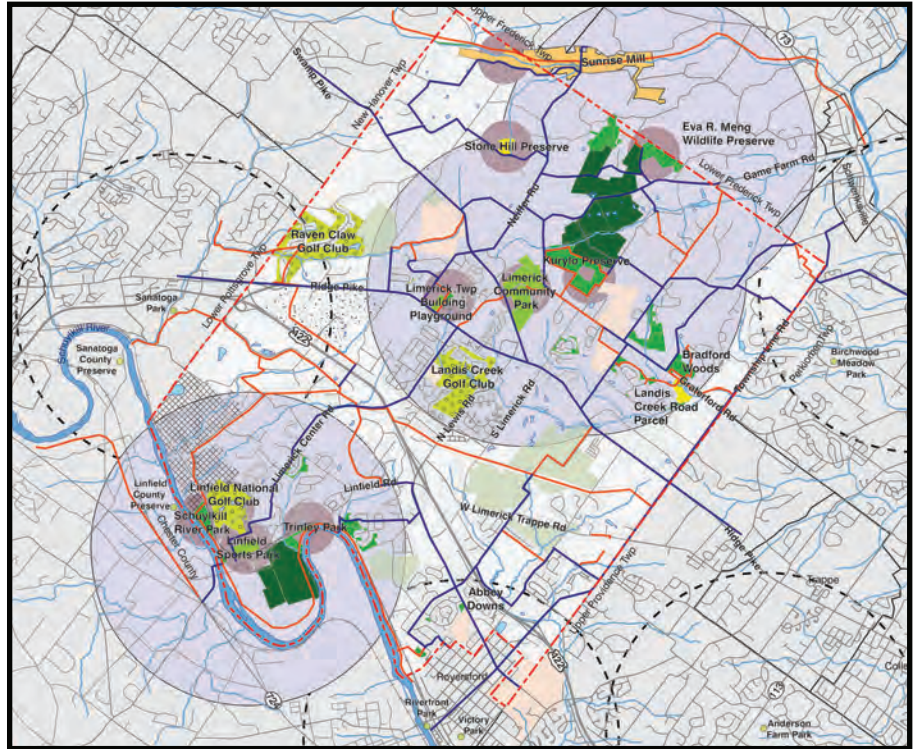
Limerick Township Open Space Plan

Limerick Township, Montgomery County, Pennsylvania

Park Planning Trail/Greenway Master Planning

Since the 1990's, Limerick Township has been one of Montgomery County's fastest growing communities. While Limerick's park system and open space has grown to keep pace with this growth (approximately 13% of the Township is permanently preserved open space), Township Supervisors understand that the Township must remain aggressive in its preservation of open space and development of parks.

In its role as township planner, Simone Collins Landscape Architecture developed a blueprint for possible future acquisition of new open space lands. The township is considering a referendum for an increase in the Township's earned income tax that would be targeted toward open space acquisition and maintenance. The focus of SC's plan has been connectivity – both in connecting existing parks and open space parcels to one another and also linking the present and future green system together via Limerick's extensive trail and greenway plan, which was completed by SC in 2013.



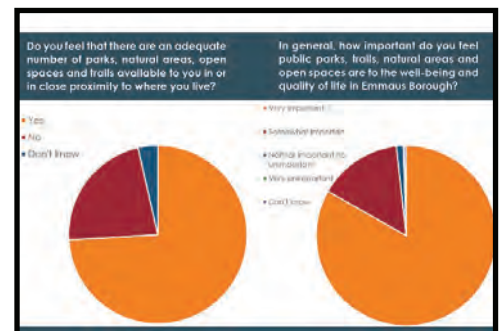
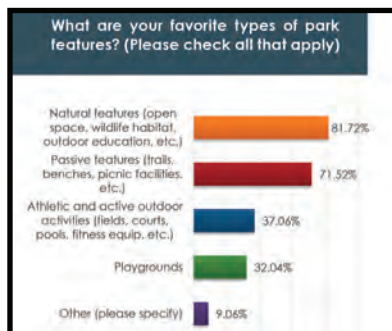
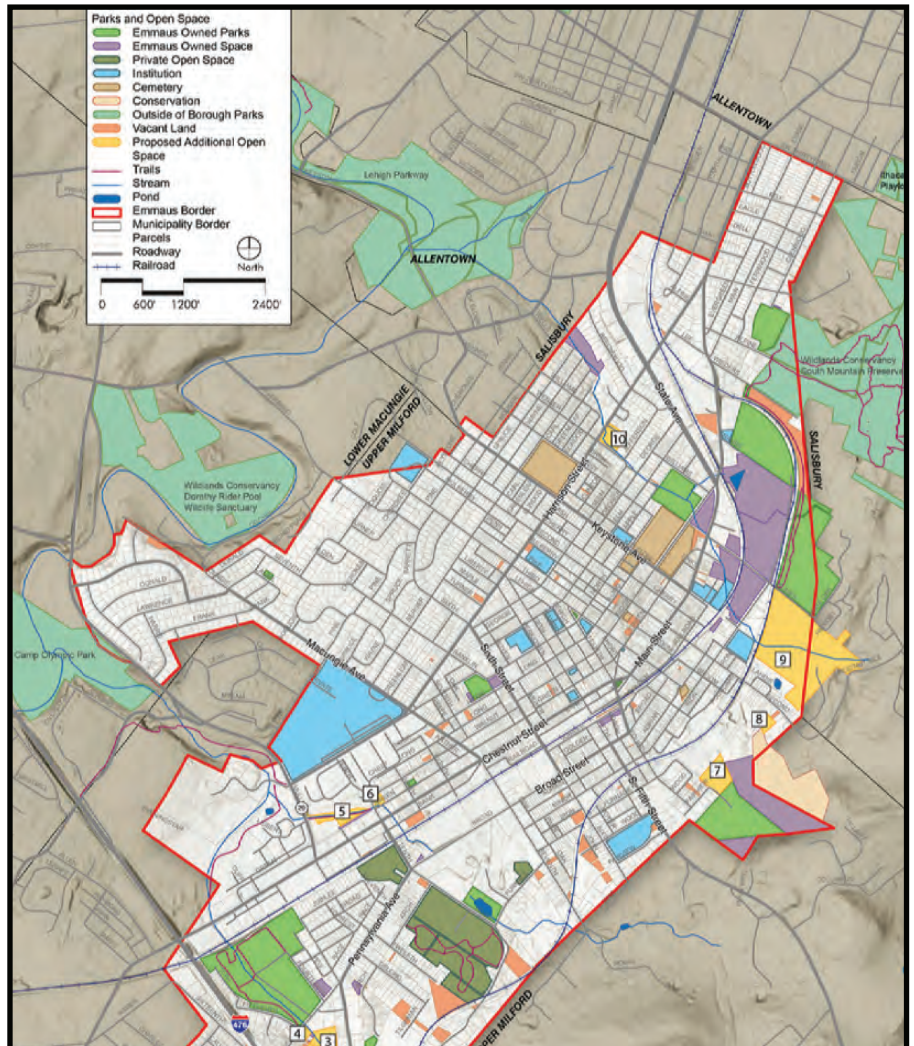
Borough of Emmaus Parks, Recreation & Open Space Plan

Borough of Emmaus, Lehigh County, Pennsylvania

Park Design Trail/Greenway Master Planning

Simone Collins Landscape Architecture was chosen from among a dozen teams that submitted proposals to conduct a comprehensive examination of Emmaus' impressive system of parks. The Borough's green infrastructure is composed of 20 park facilities which offer a wide array of recreational opportunities.

The Plan completed in 2021 includes an examination of greenways and trails along with detailed master plans for two of the boroughs.



Lower Providence Parks & Recreation Open Space Plan

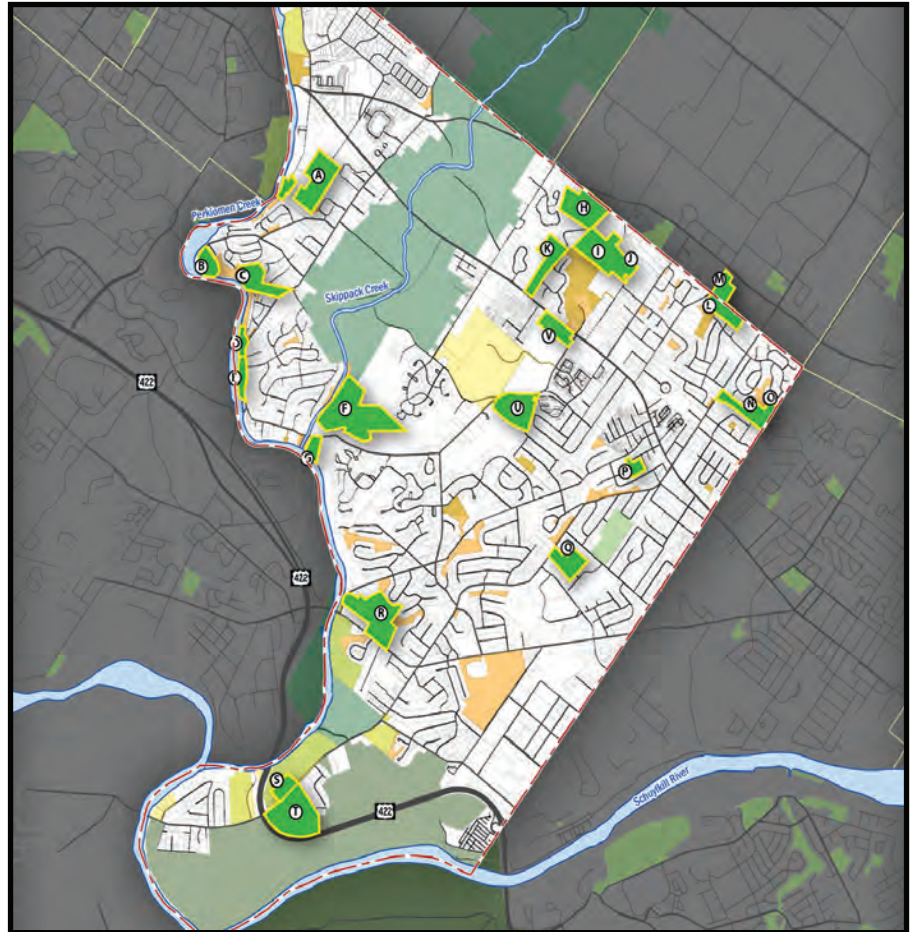
Lower Providence, Montgomery County, Pennsylvania

Park Design Trail/Greenway Master Planning

Simone Collins was selected from among ten consultants for the Lower Providence Township Parks & Recreation Open Space Plan. The preparation of this plan included a robust public participation process where ideas were obtained from the public, community stakeholders, focus groups, key person interviews and through an online public opinion survey and an interactive Wikimap.

The extensive Park system is complemented by county, state and federal facilities, including Evansburg State Park and Valley Forge National Historical Park, which add to the range of recreational amenities enjoyed by Township residents. In addition, the Township contains portions of the Schuylkill River Trail and the Perkiomen Trail. The SC plan includes recommendations for new connections to these regional trails, including a pedestrian bridge over the Perkiomen Creek. Additional trail and sidewalk connections will provide safe and efficient access to neighborhoods, businesses, and parks.

The SC plan also includes recommendations for existing park improvements and identifies parcels for future acquisition for parks or greenways. Specific recommendations for maintenance, programming and park/recreation administration are an important part of the plan to ensure the longevity of the Township's investments.

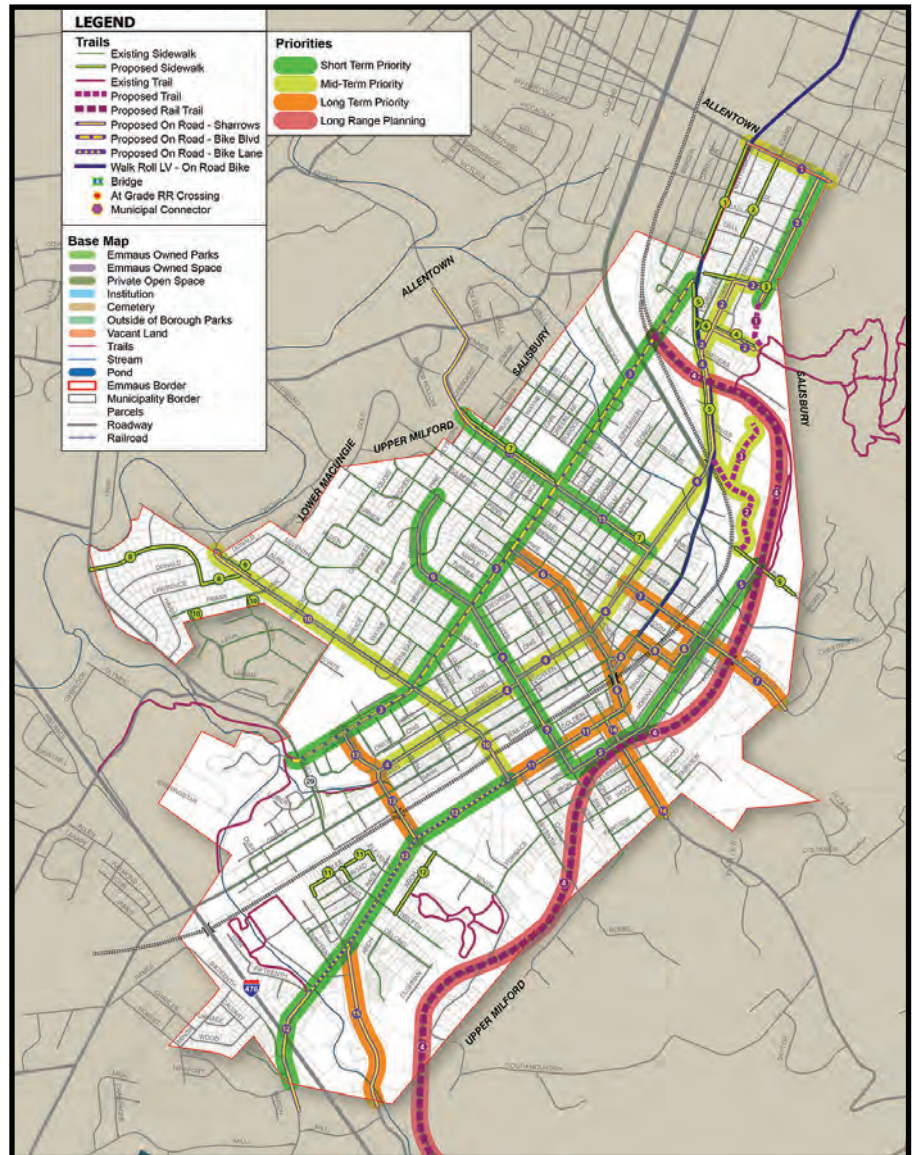


Borough of Emmaus Trails & Greenways Plan

Borough of Emmaus, Lehigh County, Pennsylvania

Park Design Trail/Greenway Master Planning

Simone Collins Landscape Architecture was chosen from among a dozen teams that submitted proposals to conduct a comprehensive examination of Emmaus' impressive system of parks. The Borough's green infrastructure is composed of 20 park facilities which offer a wide array of recreational opportunities. SC's scope includes an examination of greenways and trails along with detailed master plans for two of the Borough's parks.

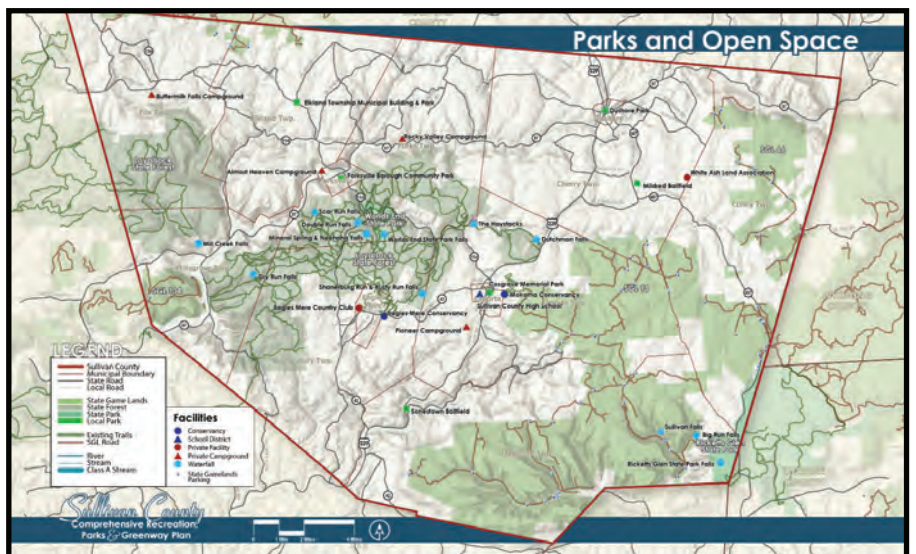
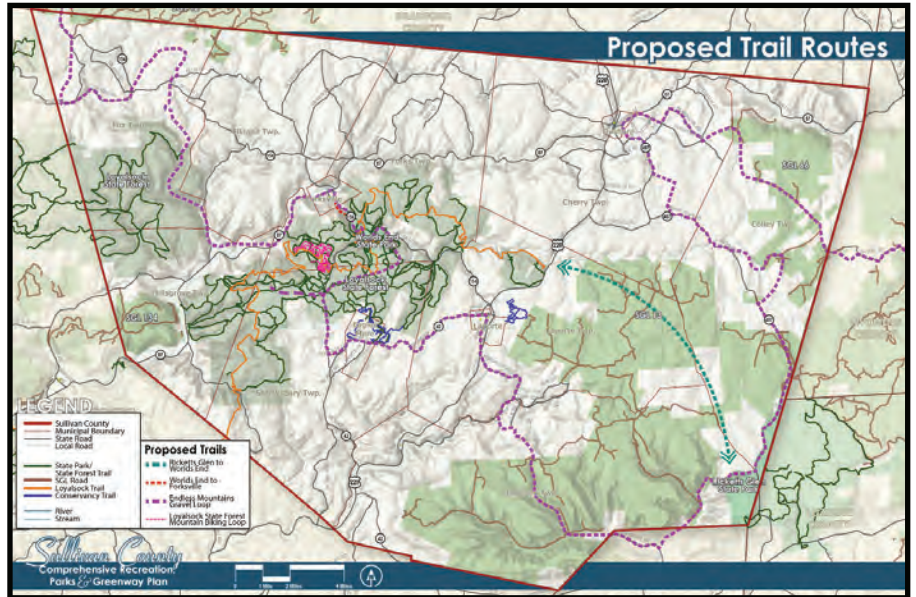


Sullivan Co. Open Space & Greenway Plan

Sullivan County, Pennsylvania

Trail/Greenway Master Planning Park Design

Simone Collins completed the Comprehensive Recreation, Parks & Open Space Plan for Sullivan County – in the heart of Pennsylvania’s Endless Mountains region. The project area includes the popular Ricketts Glen State Park, Loyalsock State Forest – with multiple natural areas, as well as the park and greenway resources within the 13 municipalities.



Fayette County Parks Master Plan

Fayette County, Pennsylvania

Master Planning

The existing 172-acre site contains a 75-acre lake and serves as a regional destination for fishing and other community activities. Owned by the PA Fish and Boat Commission and leased to Fayette County, fishing will remain the primary focus of this facility. However, during the 8-month master plan process SC worked with the County, local municipality, and local residents to determine how best to manage the site to meet current and future recreational needs. The SC plan combines a 2-mile multipurpose trail around the lake with improved fishing access. Riparian planting improvements will enhance water quality. Other key components include a relocated children's fishing area with an ADA floating fishing pier, sunset & sunrise sitting areas, dog park, and community building. The plan also proposes improvements to the site's existing parking, playgrounds, pavilions and restrooms.

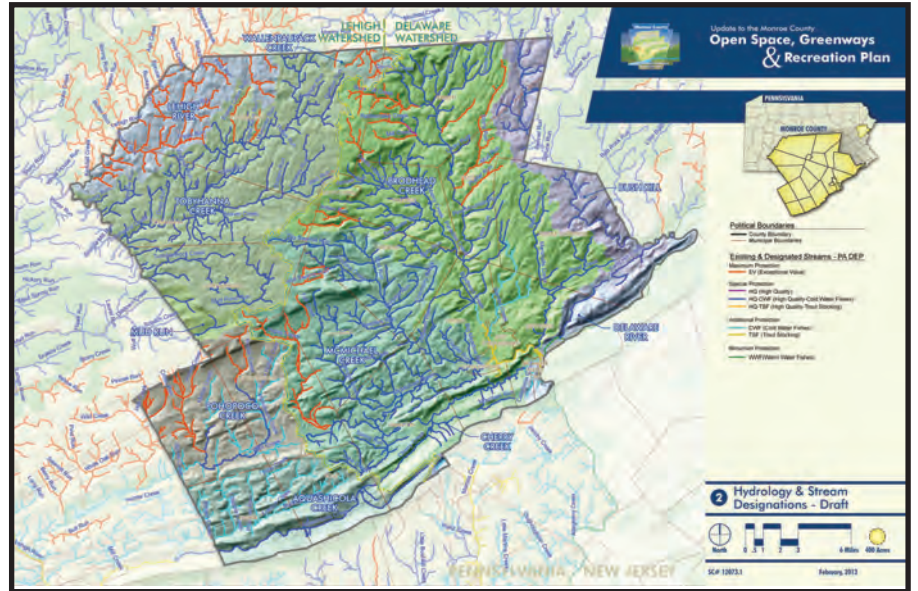


Monroe County Open Space Greenway and Recreation Plan

Monroe County, Pennsylvania

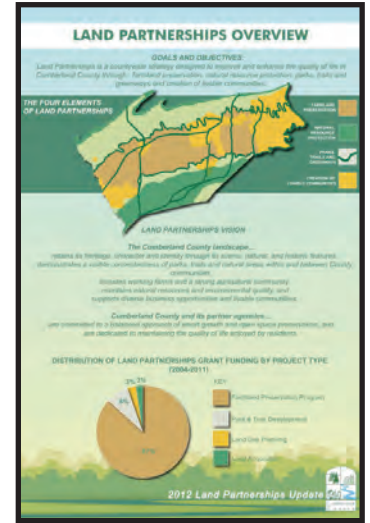
Trail/Greenway Master Planning

Simone Collins prepared the Monroe County Open Space and Recreation Update as an element of the county's Comprehensive Plan. SC documented the links between locally-based economic development and conservation, recreation, and tourism resources. SC met monthly with dedicated volunteers of County's Open Space Advisory Board to define and meet the evolving needs of Monroe County over the next decade. SC conducted an extensive public participation process and technically combined GIS and rendering programs to create highly graphic mapping tools that are both easily understood by the general public and essential database tools for County planning staff. In the process SC identified potential trail and recreation connections from Monroe to Lackawanna, Lucerne, Northampton, and Carbon Counties.



Cumberland County, PA Open Space Plan

Cumberland County, Pennsylvania



Regional Planning Community Involvement

Simone Collins assisted the Cumberland County Planning Department to prepare the update for the 2006 Land Partnerships Plan: A Countywide Strategy for Open Space Preservation and Smart Growth. The Plan established a community-based vision to maintain and improve the quality of life in Cumberland County through the preservation of open space amenities for current and future generations. SC developed a highly successful implementation strategy focusing on farmland preservation and pilot grant programs to local municipalities and non-profits. The update evaluated the progress of the 2006 plan, demographic and mapping information; emerging open space preservation, smart growth trends and issues; and elements to implement and finance through 2017. SC led the public participation process, including organizing meetings, workshops, and two on-line public opinion surveys.

Introduction

Land Partnerships is a countywide strategy designed to maintain and improve the quality of life in Cumberland County through:

- Agriculture Preservation
- Natural Resource Protection, and
- Parks, Trails & Greenways

Land Partnerships is a blueprint intended to help the County achieve a healthy balance between preservation and development. The plan seeks to encourage action in the community and facilitate partnerships among federal, state, county and local governments, non-profit organizations, businesses and landowners to achieve a common vision. Land Partnerships will serve as a guidebook for the 33 municipalities in the County. Municipalities and conservation stakeholders should use the County plan as a reference and point of departure for their own planning initiatives.

Plan Goals

The core goals of the Plan are as follows:

- Preserve the agricultural lands of Cumberland County
- Conserve the significant natural resources of Cumberland County
- Provide parkland for the recreation needs of County residents
- Provide trails to connect citizens with destinations throughout the County
- Create a comprehensive greenways system throughout Cumberland County
- Actively implement the principles of Land Partnerships in developed communities
- Educate Cumberland County landowners, municipalities, and non-profit organizations to promote understanding of land conservation and preservation options and opportunities.

Needs Assessment Findings

The following needs were identified during the assessment process:

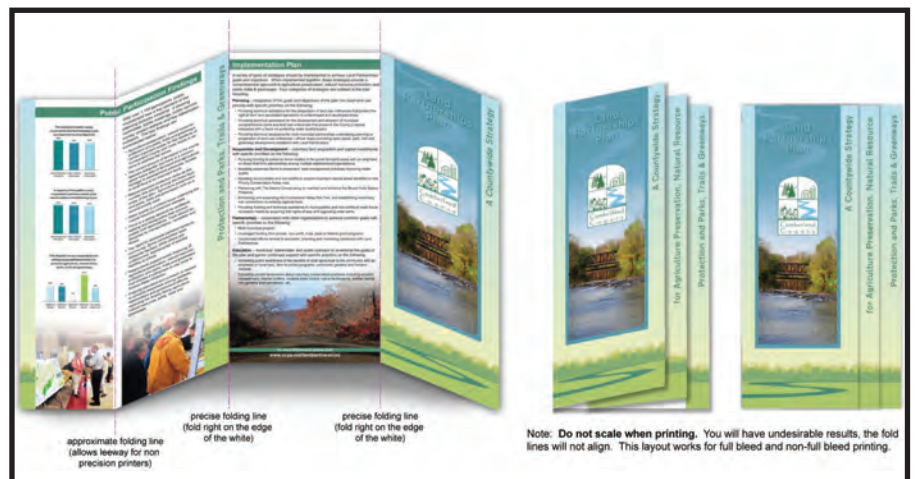
- The population of Cumberland County is expected to continue to grow steadily. Conservation efforts are needed to respond to the agriculture preservation, natural resource, and parks, trails & greenways needs of the increasing population.
- Important natural resources of the County lack permanent protection.
- Conservation and economic development are not mutually exclusive. Agriculture preservation, natural resource protection and parks, trails & greenways are integral components to a thriving economy.
- Many municipal land use plans and ordinances are outdated and do not reflect current planning trends and best management practices. Planning for agriculture preservation, natural resource protection and parks, trails & greenways is an immediate need.
- A balanced and diverse implementation approach is needed to respond to the unique needs of the County.

Partners, Trails & Conceptual Greenways

Agricultural Preservation Planning

Priority Conservation Areas

for Agriculture Preservation, Natural Resource

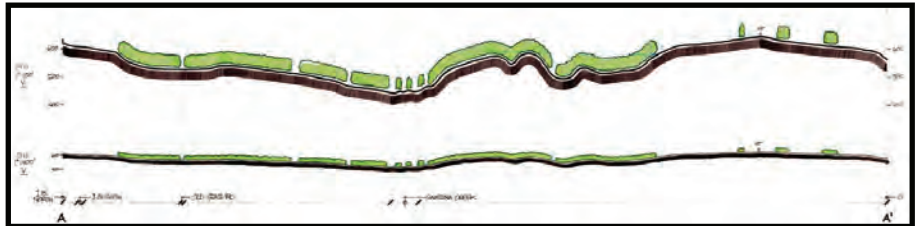
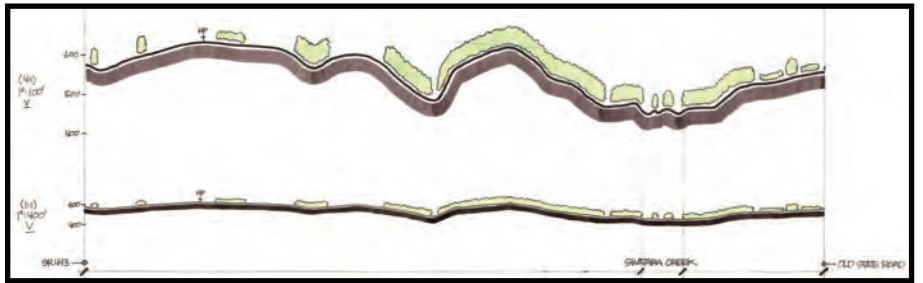
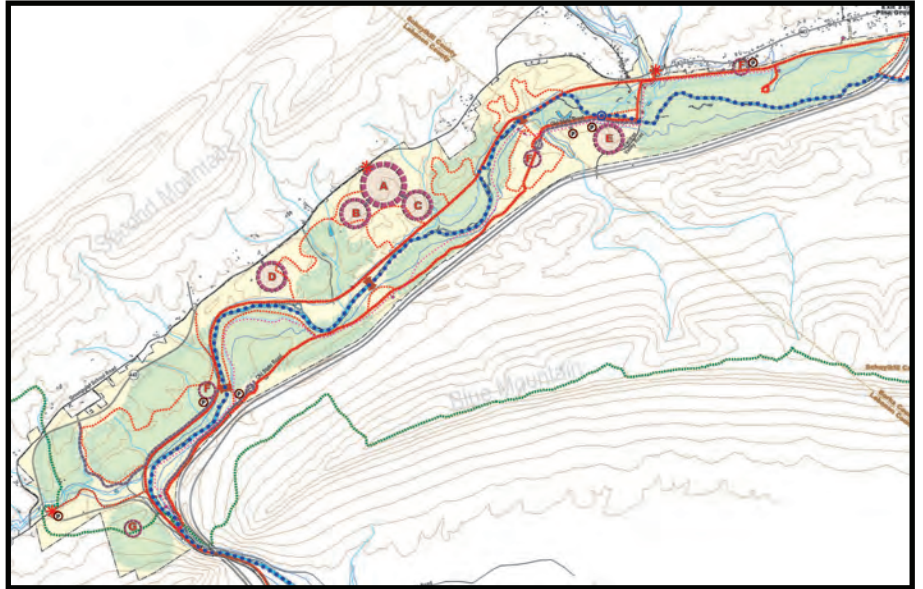


Swatara State Park Master Plan

Lebanon and Schuylkill Counties, Pennsylvania

Master Planning

Simone Collins led a multi-disciplinary team to create the master plan for the 3,415-acre Swatara State Park. The SC award-winning public participation process engaged hundreds of participants during the 18 month project term. The master plan outlined \$32 M in proposed improvements while disturbing only 5% of the site. Re-connecting disconnected forest masses and buffering wetlands and vernal pools is a major emphasis of the management plan. Most of the park will remain untouched, and over 50 miles of trails will be conserved. Swatara State Park will include: a visitors center; camping areas and cabins; day use swimming pool; canoe launch areas; pedestrian bridge to cross the creek; and equestrian camping facilities. The planning process won a commendation from the Commonwealth Citizen Advisory Board for its exemplary public participation process.



Delaware Canal Vision Study

Bucks & Northampton Counties, Pennsylvania

Regional Planning
Public Involvement
Graphic Analysis

Simone Collins was the prime consultant for the Delaware & Lehigh National Heritage Corridor, Inc. and its partners, DCNR, Delaware Canal 21 and the Friends of the Delaware Canal, to conduct a public "Vision" study funded by the William Penn Foundation.

This visioning process identifies issues and opportunities along the entire 60-mile Delaware Canal State Park and D&L Trail between Easton and Bristol, Pennsylvania.

SC led six public meetings and multiple stakeholder meetings to engage partners in articulating goals for creating a fully sustainable, watered Canal for the 21st century.



2019 ASLA PA/DE
MERIT AWARD

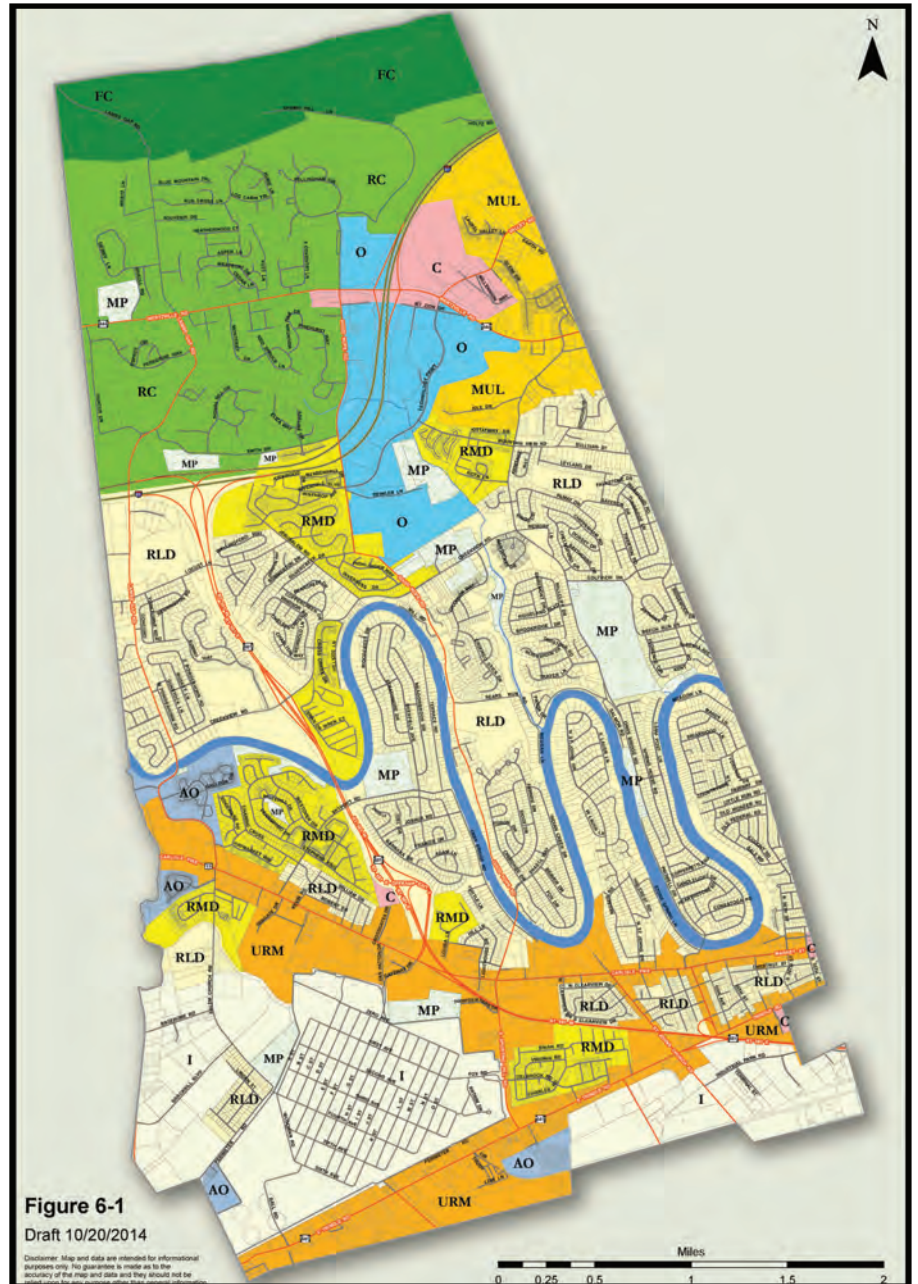
2019 PRESERVATION PENNSYLVANIA
AWARD IN COMMUNICATION

Hampden Township Comprehensive Plan Update

Cumberland County, Pennsylvania

Land Use Planning Zoning

Hampden Township is a thriving, mostly developed community on Pennsylvania's "west shore" in eastern Cumberland County. The challenges facing the township range from outdated roadway infrastructure, inadequate drainage facilities in low-lying areas of the township, to the need to redevelop outdated commercial areas. Working closely with County planners, township staff and planning commission, Simone Collins conducted the public participation process of the Comprehensive Plan process toward finalization and adoption of the plan. Major initiatives of the plan include a new mixed use zoning overlay in the major commercial corridors of the township and a limited mixed use area in the last remaining parts of the township to be developed.

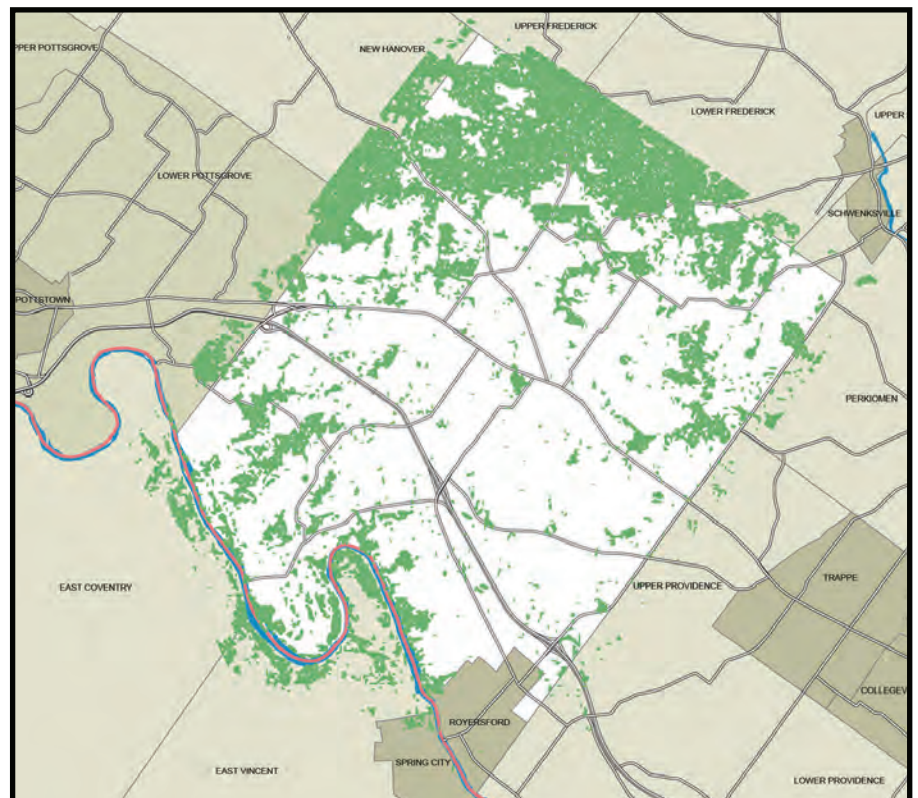


Limerick Township Comprehensive Plan

Limerick Township, Montgomery County, Pennsylvania

Land Use Planning Vision Planning

Limerick Township is located along the Route 422 corridor in Montgomery County, and is one of the most rapidly growing areas of the state - experiencing a 102% increase in population between 1990 and 2000. Simone Collins prepared the Township Comprehensive Plan with recommendations to manage growth and preserve the township natural, heritage and cultural resources. As lead consultant SC incorporated sustainable growth techniques, including LEED and Green Globe standards, to foster a sustainable and ecologically balanced local environment.

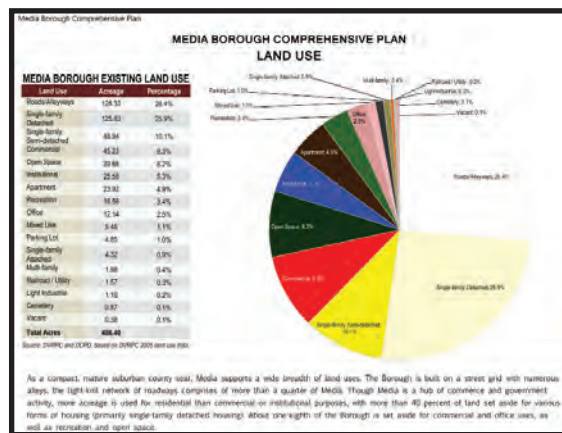
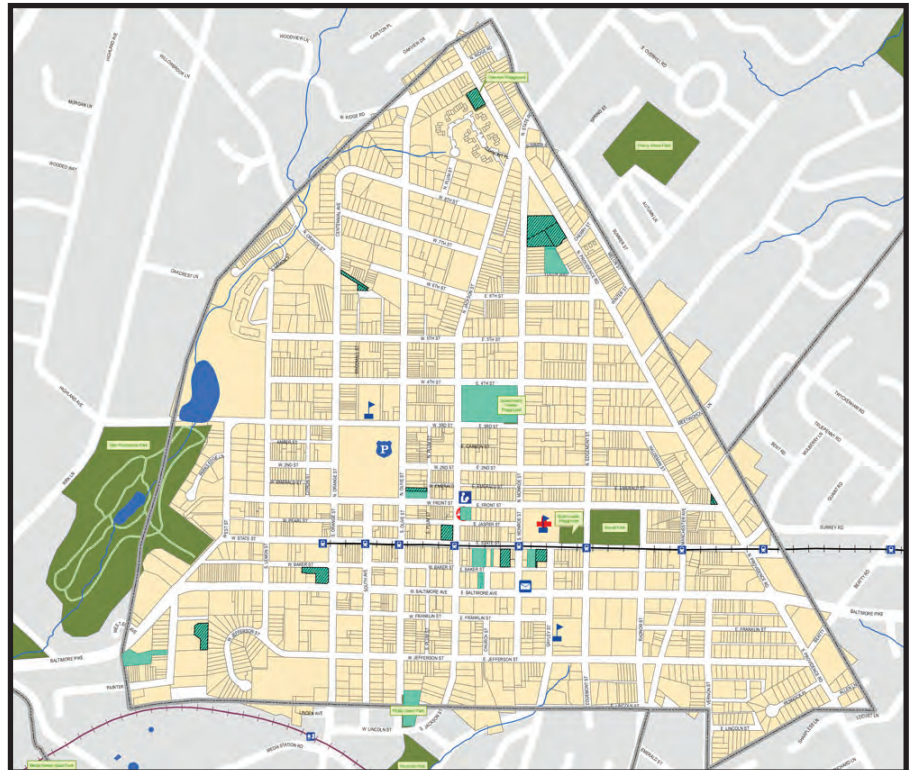


Media Comprehensive Plan

Borough of Media, Delaware County, Pennsylvania

Land Use Planning Zoning

Simone Collins worked closely with Delaware County, Media Borough residents, civic groups and business owners, to identify significant opportunities for changes to land use policies to stimulate economic development and sustainability in this fully developed Borough. In response to an expanding “echo-boomer” demographic, Simone Collins recommended various methods to reduce reliance on automobiles through zoning changes promoting higher density near mass transit stations and the enhancement of safe bicycle and pedestrian routes to these and other significant destinations. Specific zoning recommendations were predicated on market demand and include: mixed use developments and taller buildings near mass transit, expansion of civic spaces, context sensitive architectural design guidelines and incentives for “green” building practices. In addition to the economic benefits, the comprehensive plan recommendations seek to enhance socio-economic and cultural diversity by promoting a variety of housing types, business opportunities, community events and the arts.

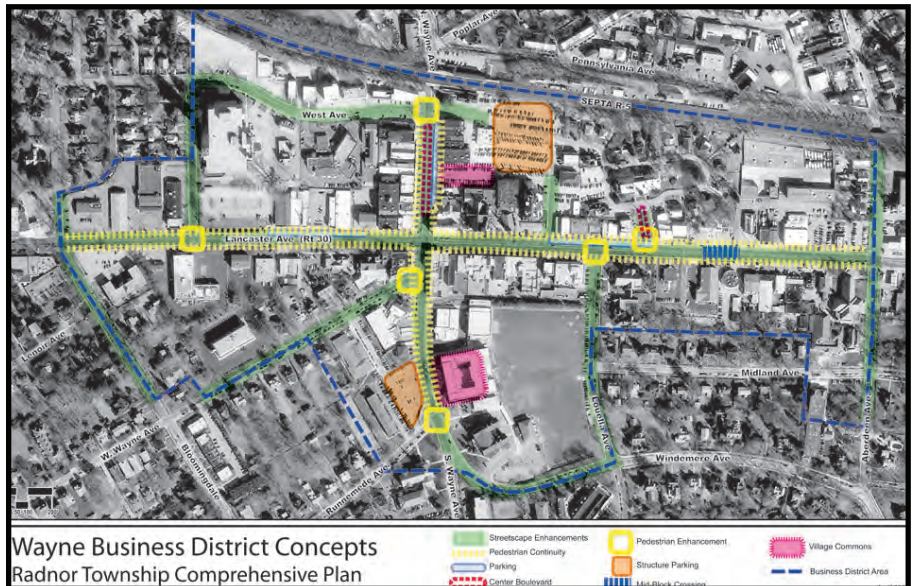


Radnor Comprehensive Plan

Radnor, Delaware County, Pennsylvania

Land Use Planning
Vision Planning
Community Involvement

Simone Collins served Radnor Township to formulate the plan for future growth and development within the context of the community character and heritage. SC worked with elected and appointed officials and active resident associations to develop the plan, and assisted in preparing the land use plan and the open space/recreation elements of the Radnor Comprehensive Plan.

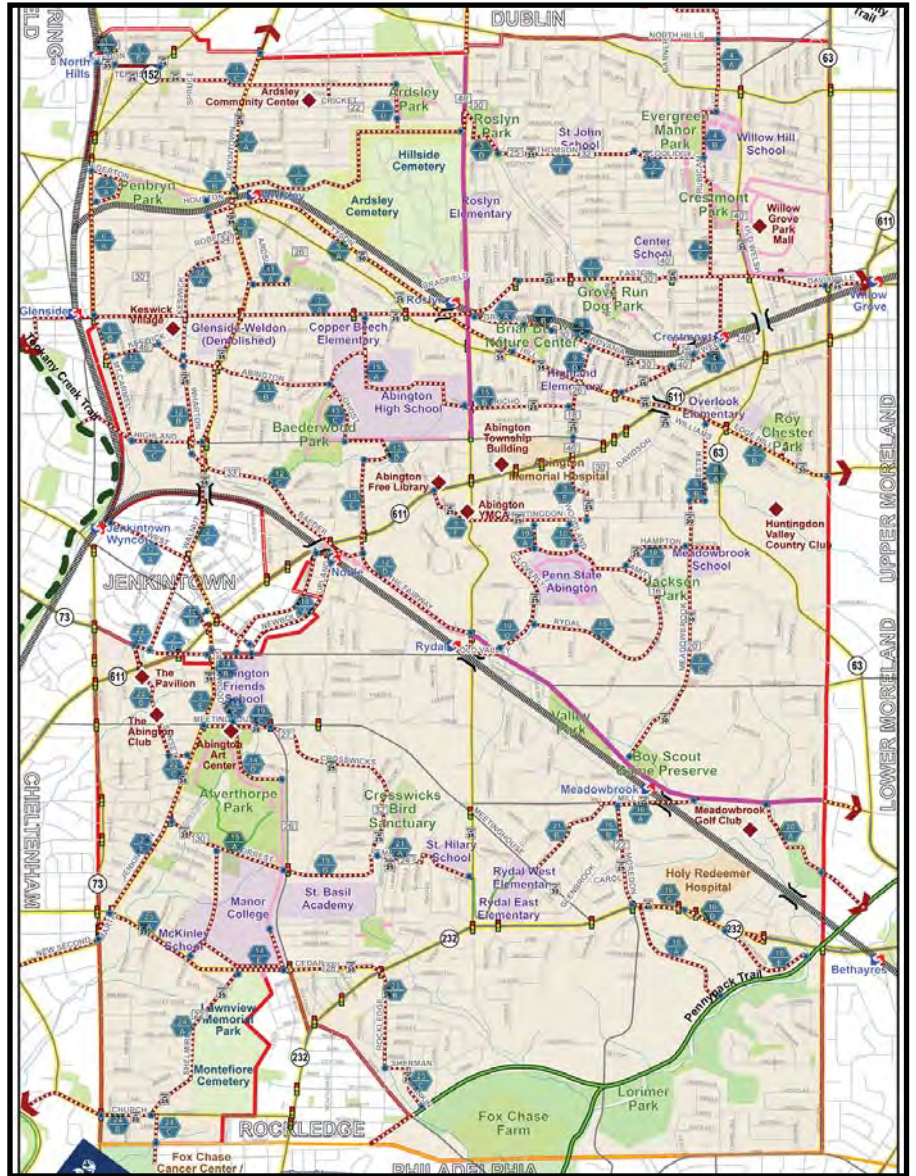


Abington Bike Plan

Abington Township, Montgomery County Pennsylvania

Transportation Trail Planning

Simone Collins Landscape Architecture teamed with Traffic Planning & Design to create a Bicycle Master Plan for Abington Township, Montgomery County, PA. The fully developed township presented few opportunities for off-road trails, however, the master plan includes 5 miles of off-road routes and 42 miles of on-road routes. The trails will connect with schools, the township's many SEPTA stations and other important destinations in the community. The estimated cost for implementation of the trails is \$6.2 million and it expected that the trails will be built over a period of 10 to 15 years.



CVS - Abington Township

Abington Township,
Montgomery County,
Pennsylvania



Site Design Planning / Zoning

Simone Collins was retained by Summit Realty Advisors to develop architectural design and streetscape design for a proposed CVS pharmacy in the Roslyn neighborhood of Abington Township, Montgomery County. SC served as liaison to the township ward commissioner to work through zoning and aesthetic details of the development proposal. SC's work helped the project progress to land development consideration

SIMONE



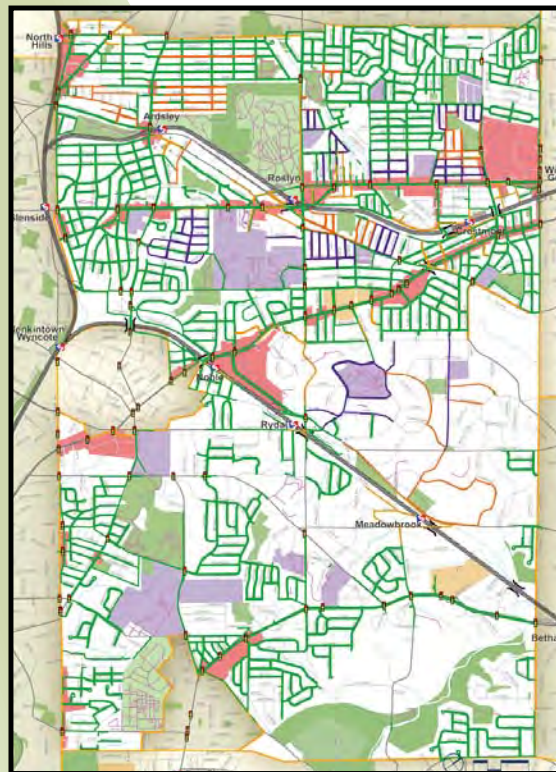
COLLINS
LANDSCAPE
ARCHITECTURE

WWW.SIMONECOLLINS.COM

SC# 15104 - 517

Abington Township,
Montgomery County,
Pennsylvania

Walk Park Train Abington



Transportation Planning Urban Planning

Simone Collins conceived of, authored the successful grant for, and is now completing "WALK PARK TRAIN Abington" a textbook example of innovative multi-modality planning in Abington Township, Montgomery County, PA. While officially a township, this large suburban community of 50,000 residents has seven SEPTA train stations, bus service and excellent access to regional highways. WALK PARK TRAIN Abington seeks to close existing gaps in the Township's pedestrian and bicycle networks while enhancing safety, increase parking access at mass transit stations, and encourage TOD (Transit Oriented Development) opportunities toward enhancing the efficacy of mass transit utilization in Abington, when it seeks to mitigate motor vehicle congestion. The plan will be completed in mid-2017. The grant is funded under the Transportation and Community Development Initiative (TCDI) program by the Delaware Valley Regional Planning Commission (DVRPC).

SIMONE

COLLINS
LANDSCAPE
ARCHITECTURE

WWW.SIMONECOLLINS.COM

SC# 16020 - 515

Penn State Abington



photo-sim: "after"



photo-sim: "after"

Campus Planning Zoning

Simone Collins was retained to assist the university to incorporate two former residential parcels into the main campus. SC examined methods and procedures under the township ordinances to create limited changes to zoning for these parcels that would convince township supervisors to enact zoning changes to allow university-related uses. SC also created photo-simulations of changes to the lots' landscaping to help buffer the new uses from adjacent residences.



June 14, 2022

Richard J. Manfredi, Manager
Township of Abington
1176 Old York Road
Abington, PA 19001

RE: Simone Collins Proposal for Services: FEE PROPOSAL
Comprehensive Recreation, Park, and Open Space Planning for Abington Township
SC # 22044.00

Dear Mr. Manfredi and the selection committee,

As instructed, this fee proposal accompanies a Simone Collins Technical Proposal under a separate cover – both dated 6-14-22.

Simone Collins prepared this proposal based on our deep experience in municipal recreation planning – and our fee proposal reflects a competitive price with similar projects of this scale and complexity. SC assigned our most competitive rates for a highly-experienced team of landscape architects, engineers, and recreation planners.

The result is a SC Team proposal that will deliver a minimum of 835 staff hours at an average staff rate of \$92 / hour. I will be personally involved in the public participation, planning analyses, and specifically the partnership funding strategy for Abington Township.

SC is open to mutually negotiating scope/fees with clients where it is in the best interest of the project and both parties. Please review the attached spreadsheet and contact me directly with any questions. Thank you for your careful review of this SC Team proposal.

Sincerely,

SIMONE COLLINS, INC. LANDSCAPE ARCHITECTURE

A handwritten signature in blue ink that reads "William Collins".

William Collins, RLA, VP

ABINGTON TWP - CROSP SC # 22044.0		SIMONE COLLINS - Patrick Stasio							
SIMONE COLLINS FEE PROPOSAL - June 14, 2022		RLA	RLA	PE	LA	CPRP			
Sections		Collins	Leeper	Nardone	Staff LA	Stasio	ST hrs	%/ Tot budget	
Tasks	Tasks (per RFP)								
Section 1	Executive Summary (tasks)	2	4	2	8	2	18		
A	Purpose, goals and objectives	1	2	1	4	1	9		
(B)	Public Participation - refer to Section 5						0		
(C)	Background Information - refer to Section 2						0		
D	Mission Statement / project synopsis	1	2	1	4	1	9		
	Section 1 - subtotal	\$280	\$380	\$180	\$640	\$170	\$ 1,650	0.02	
Section 2	Inventory & Analyses	11	46	42	80	52	231		
C	Background Information	2	4	4	16	4	30		
E	Agency Administration	2	8	2	4	8	24		
F	Agency Personnel	1	2	4	4	8	19		
G	Facilities & Open Space	2	16	12	40	6	76		
H	Facilities & Equipment Maintenance	2	8	12	8	10	40		
I	Recreation Programs & Services	2	8	8	8	16	42		
	Section 2 - subtotal	\$1,540	\$4,370	\$3,780	\$6,400	\$4,420	\$ 20,510	0.27	
Section 3	Plan Alternatives	8	36	16	44	20	124		
P-1	Alternatives - includes Including Play site assessments	4	20	8	24	10	66		
P-2	Preferred Plan / Program	4	16	8	20	10	58		
	Section 3 - subtotal	\$1,120	\$3,420	\$1,440	\$3,520	\$1,700	\$ 11,200	0.15	
Section 4	Financial	28	24	16	36	20	124		
J	Financing / Funding	12	8	2	10	4	36		
K	Cost Estimates / Recommendations	8	8	10	16	8	50		
L	Plan Implementation / Schedule	8	8	4	10	8	38		
	Section 4 - subtotal	\$3,920	\$2,280	\$1,440	\$2,880	\$1,700	\$ 12,220	0.16	
Section 5	Public involvement	28	41	38	72	40	219		
B-1	Committee Meetings (5)	10	15	10	15	10	60		
B-2	Public meetings (3)	9	15	9	15	9	57		
B-3	Focus group meetings (5)	5	5	5	10	5	30		
B-4	Key Person Interviews (10)	2	2	12	12	12	40		
B-5	Online Public Survey	2	4	2	20	4	32		
	Section 5 - subtotal	\$3,920	\$3,895	\$3,420	\$5,760	\$3,400	\$ 20,395	0.27	
Products	Deliverables / Production	15	24	8	54	18	119		
	Executive Summary	4	2		10	2	18		
	Draft Report	8	12	4	24	8	56		
	Final Report	2	8	4	12	8	34		
	Presentation boards	1	2		8		11		
	Products - subtotal	\$2,100	\$2,280	\$720	\$4,320	\$1,530	\$ 10,950	0.14	
	total hours	92	175	122	294	152	835	min team hrs	
	hourly rate	\$140	\$95	\$90	\$80	\$85	\$92	Avg . Rate	
	Labor costs	\$12,880	\$16,625	\$10,980	\$23,520	\$12,920	\$ 76,925	1.00	
	NOT TO EXCEED - TOTAL LABOR COST	\$76,925							
	Reimbursable costs - to be confirmed for contract	\$1,728							
	Mileage:	\$240							
	Tolls:	\$25							
	misc. photocopies	\$200							
	misc. plan plots	\$300							
	Wiki-mapping on line fee	\$200							
	Survey Monkey on line fee	\$100							
	Draft Plan Report - printed copies (1 at \$125 each)	\$125							
	Final Plan Report Copies (1 at \$200 each)	\$200							
	TOTAL PROJECT COST (Labor + reimbursable expenses)	\$78,653							