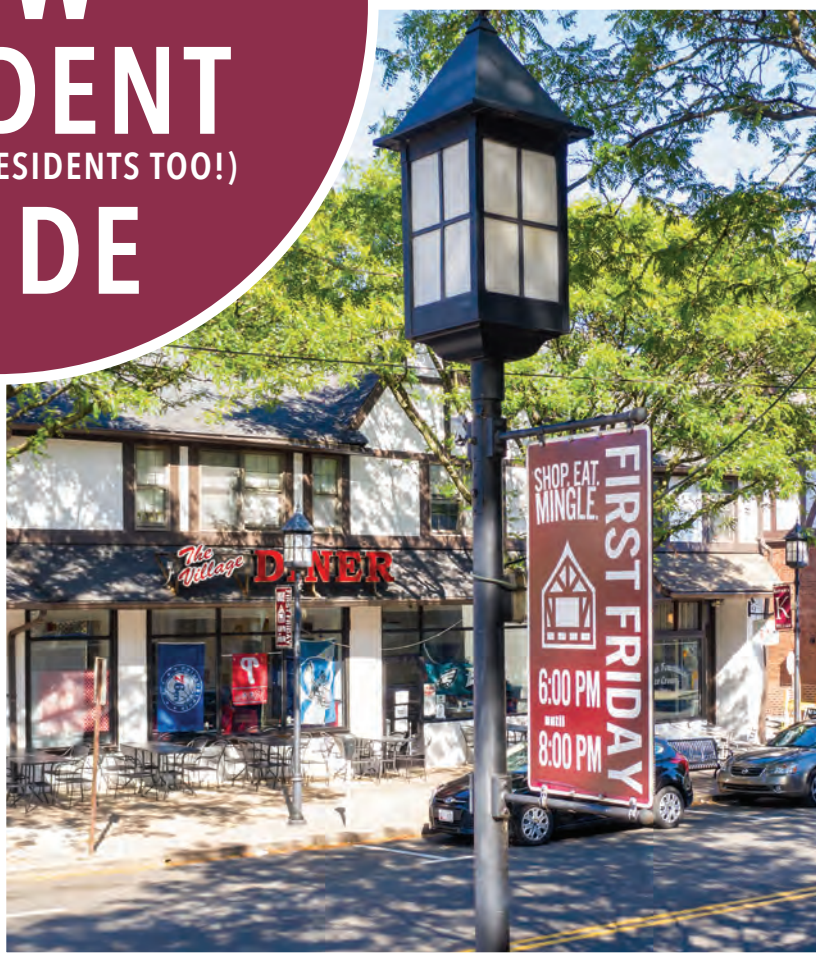




*Abington
Township*
**NEW
RESIDENT
(AND CURRENT RESIDENTS TOO!)**
GUIDE

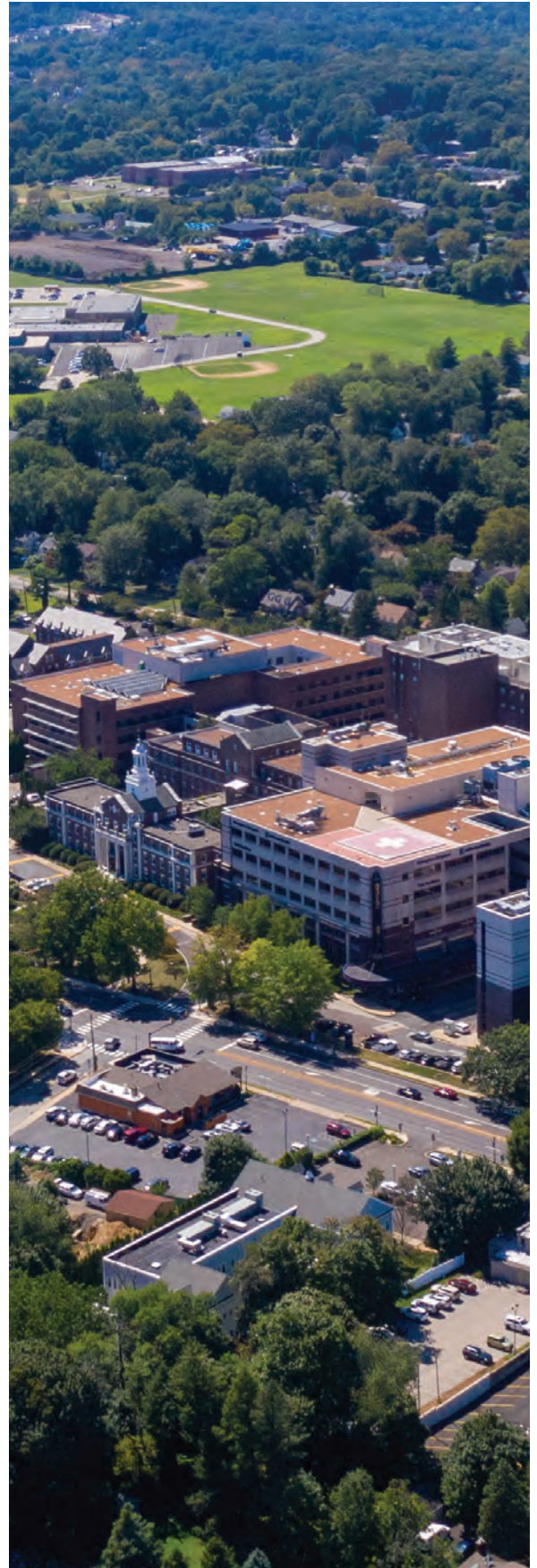


1176 OLD YORK ROAD, ABINGTON, PA 19001
267-536-1000
WWW.ABINGTONPA.GOV



Contents

- 1** Welcome Message
- 2** Board of Commissioners
- 4** Township Boards Meeting Information
- 5** Contact Information
- 6** Stay Connected!
- 7** Department Services
- 18** Human Relations Commission
- 19** Shade Tree Commission
- 20** New Resident Check List
- 21** Voter Services
- 22** F.A.Q.
- 26** Ward Map
- 27** Citizen Service Request Tool



Welcome to Abington Township!

A MESSAGE FROM THE TOWNSHIP MANAGER

Welcome to Abington Township. We are happy you are here. Our mission is to serve the property owners, taxpayers, ratepayers and all who visit Abington Township in a professional and respectful manner while delivering cost effective and efficient services.

We recognize the dignity and worth of public service and are dedicated to the highest standards of integrity. We pledge to be a self-motivated, responsive municipality that continually strives to provide the most efficient, effective, and fiscally responsible service for Abington residents.

This guide provides important information about living in Abington Township, such as meeting dates, refuse collection days, police services, fire services, leaf collection information, and park locations. At the end of this packet, you will find a "frequently asked questions" section to help you find information more easily. I encourage you to stay in touch whether by attending a public meeting, visiting our website at www.abingtonpa.gov, or following us on Facebook, Twitter, or Instagram. Should you have any questions, please do not hesitate to contact us at 267-536-1000 or publicinfo@abingtonpa.gov.

Abington Township has been voted a "Best Place to Live" in 2008, 2010, 2019, 2020, and 2022 by Money Magazine, and that is undoubtedly, in part, due to the individuals who call Abington home and their commitment to this wonderful community. Welcome home.

We look forward to serving you,

Richard J. Manfredi,
Township Manager



Board of Commissioners



Thomas Hecker, Ward 1
Board President
1443 Tallyho Road
Meadowbrook, PA 19046
thecker@abingtonpa.gov
215-688-6235



Kenneth N. Brodsky, Ward 2
354 Van Roden Circle
Huntingdon Valley, PA 19006
kbrodsky@abingtonpa.gov
267-698-2470



Drew Rothman, Ward 3
705 Carmet Road
Jenkintown, PA 19046
drothman@abingtonpa.gov
215-817-4852



Jimmy DiPlacido, Ward 4
264 Tulpehocken Avenue
Elkins Park, PA 19027
jdiplacido@abingtonpa.gov
267-800-5565



Ayanna Laney-Martin, Ward 5
1625 High Avenue
Willow Grove, PA 19090
alaney-martin@abingtonpa.gov
215-657-5708



Jeffrey Browne, Ward 6
301 Maple Avenue
Glenside, PA 19038
jbrowne@abingtonpa.gov
267-235-3503



Stuart Winegrad, Ward 7
355 Evergreen Road
Jenkintown, PA 19046
swinegrad@abingtonpa.gov
484-352-3428



Lori Henry, Ward 8
2802 Mount Vernon Avenue
Willow Grove, PA 19090
lhenry@abingtonpa.gov
215-598-2654



Dennis C. Zappone, Ward 9

742 Garfield Avenue
Ardsley, PA 19038
dczapp1@verizon.net
215-887-0224



Christine Young-Gertz, Ward 10

1866 Edmund Road
Abington, PA 19001
cyoung-gertz@abingtonpa.gov
215-266-9681



John L. Spiegelman, Ward 11

1217 Edge Hill Road
Abington, PA 19001
spiegs@abingtonpa.gov
215-740-4306



Matthew Vahey, Ward 12

Board Vice President
2063 Wharton Road
Glenside, PA 19038
matt@mattvahey.com
215-260-0090



Bill Bole, Ward 13

349 Roslyn Avenue
Glenside, PA 19038
bbole@abingtonpa.gov
215-284-0628



Lori A. Schreiber, Ward 14

2479 Lafayette Avenue
Roslyn, PA 19001
loriforroslyn@hotmail.com
215-517-7502



Thomas Bowman, Ward 15

2946 Hammond Place
Roslyn, PA 19001
tbowman1999@aol.com
215-820-1801

FIND MY COMMISSIONER

Residents can find their Commissioner by using the interactive map in the link below. Residents can search an address to find out relevant information, such as their Ward, polling place, and elected official.

- Click here or view the map at www.abingtonpa.gov/residentlookup

Township Boards

All meetings are held in the Abington Township Board Room located at 1176 Old York Road, Abington, PA 19001, unless otherwise noted on the meeting agenda. Agendas can be found at www.abingtonpa.gov/agendas.

BOARD OF COMMISSIONERS

To view descriptions of each Board of Commissioners committee, please visit www.abingtonpa.gov/boc.

BOARD OF COMMISSIONERS

Meets the 2nd Thursday of each month at 7 PM.

BOARD OF COMMISSIONERS WORKING SESSION

Meets the 2nd Thursday of each month at 7:30 PM.

FINANCE COMMITTEE

Meets the 3rd Thursday of each month at 7 PM. There are no meetings in July or December.

PENSION PLAN COMMITTEE

Meets the 3rd Thursday in February, May, August, and November at 6 PM.

COMPREHENSIVE PLAN CONSISTENCY COMMITTEE

INFRASTRUCTURE COMMITTEE

STRATEGIC PLAN COMMITTEE

The Comprehensive Plan Consistency, Infrastructure and Strategic Plan Committees will meet at the request of the Board of Commissioners and any scheduled dates will be duly advertised in advance of any Committee meeting. The Board of Commissioners Working Session will function as a full Board Committee meeting. Finance and Pension Plan Committees will meet as noted.

VOLUNTEER PANELS

To view descriptions of each volunteer panel, please visit <https://www.abingtonpa.gov/bccc>.

PLANNING COMMISSION

Meets the 4th Tuesday of each month at 7:30 PM.

ZONING HEARING BOARD

Meets the 3rd Tuesday of each month at 7 PM.

VACANT PROPERTY REVIEW BOARD

Meets the 4th Thursday of each month at 6:30 PM.

SHADE TREE COMMISSION

Meets the 2nd Tuesday of each month at 7:30 PM.

HISTORIC PRESERVATION COMMITTEE

Meets as needed.

INDUSTRIAL DEVELOPMENT AUTHORITY

Meets as needed.

ENVIRONMENTAL ADVISORY COUNCIL

Meets the 2nd Wednesday of each month at 7 PM.

HUMAN RELATIONS COMMISSION

Meets the 1st Wednesday of each month at 7 PM.

CIVIL SERVICE COMMISSION

Meets as needed.

ECONOMIC DEVELOPMENT COMMITTEE

Meets as needed.

LIBRARY BOARD OF TRUSTEES

Meets the 4th Monday of each month at 7 PM.

Contact Information

ADMINISTRATION

267-536-1000, prompt 6
info@abingtonpa.gov

ANIMAL CONTROL

267-536-1100 ext. 1590
rgriffith@abingtonpa.gov

BRIAR BUSH NATURE CENTER

215-887-6603
info@briarbush.org

CODE ENFORCEMENT

267-536-1000, prompt 4
codeenforcement@abingtonpa.gov

COMMUNITY DEVELOPMENT

267-536-1000, prompt 5
communitydevelopment@abingtonpa.gov

EMERGENCY MANAGEMENT

267-536-1059
tmcaneney@abingtonpa.gov

ENGINEERING

267-536-1043
engineering@abingtonpa.gov

FINANCE

267-536-1052

FIRE SERVICES

267-536-1057
firemarshal@abingtonpa.gov

LIBRARY

215-885-5180
abingtonlibrary@mclinc.org

PARKS & RECREATION

215-576-5213
parksinfo@abingtonpa.gov

POLICE ADMINISTRATION

267-536-1100
abingtonpolice@abingtonpa.gov

PUBLIC WORKS

267-536-1037
publicworks@abingtonpa.gov

WASTEWATER

215-884-8329
abingtonwwud@abingtonpa.gov



PHYSICAL LOCATIONS

TOWNSHIP BUILDING

1176 Old York Road
Abington, PA 19001

PARKS & RECREATION

515 Meetinghouse Road
Jenkintown, PA 19046

PUBLIC WORKS

2201 Florey Lane
Abington, PA 19001

LIBRARY

Abington Free Library
1030 Old York Road
Abington, PA 19001

Roslyn Branch Library

2412 Avondale Avenue
Roslyn, PA 19001

TAX OFFICE

1176 Old York Road
Abington, PA 19001
267-536-1024
jblumenthal@abingtonpa.gov

HOLIDAY CLOSURES

Abington Township observes the following holidays each year:

- New Year's Day
- Martin Luther King Day
- Presidents' Day
- Good Friday
- Memorial Day
- Juneteenth
- Independence Day
- Labor Day
- Columbus Day
- Veterans Day
- Thanksgiving Day
- Christmas Day

STAY INFORMED

For Township information, news, and events, visit the Township website at www.abingtonpa.gov. For more information about a listed event or to confirm a date, time, and/or location, please visit www.abingtonpa.gov/calendar.

**POLICE & FIRE
EMERGENCY
CALL 9-1-1**

Stay Connected

SOCIAL MEDIA

FACEBOOK: @AbingtonTownship

INSTAGRAM: @abingtontownship

X: @AbingtonPA



VIDEOS & TELEVISION

Abington Township offers a government access channel for residents who would like to view Township news, event information, and recorded meetings. Information runs 24 hours a day.

COMCAST CHANNEL 43

VERIZON CHANNEL 24

Board of Commissioners meetings can be viewed anytime at www.abingtonpa.viebit.com.



E-NEWSLETTER

Subscribe to receive Abington Township's monthly electronic newsletter at www.abingtonpa.gov/newslettersignup

MEETING AGENDAS

Residents who would like to receive public meeting agendas can sign up for email notifications at www.abingtonpa.gov/agendas.

WEBSITE

Main: www.abingtonpa.gov

Police: www.abingtonpd.org

Fire: www.abingtonfd.org

Library: www.abingtonfreelibrary.org

Briar Bush: www.briarbush.org



Office of the Township Manager

Richard Manfredi, Township Manager
1176 Old York Road
Abington, PA 19001
267-536-1000
publicinfo@abingtonpa.gov

The Office of the Township Manager is responsible for administrative services, public information, and land use. The Township Manager as the chief executive and administrative officer of the Township, among other things, directs and administers all executive and non-legislative activities of the Township, except as otherwise provided by statute or ordinance, to ensure the goals and objectives of the Board of Commissioners and Administration are met.

ELECTRONIC NEWSLETTER

The Township sends out an electronic newsletter at the beginning of each month to subscribed residents. Residents can sign up to receive the e-newsletter at www.abingtonpa.gov/newslettersignup.

MEETING AGENDA NOTIFICATIONS

Residents who would like to receive public meeting agendas can sign up for email notifications at www.abingtonpa.gov/agendas.

IMPROVEMENT PROJECTS

The Township is continuously looking for ways to improve the transportation network and stormwater infrastructure within the Township. With more than 200 miles of roadway, the Township prioritizes streets each year to be resurfaced or examined for pedestrian, bicyclist, stormwater and/or safety improvements. Information about improvement projects can be found at www.abingtonpa.gov/projects.

LAND DEVELOPMENT

Land use is critical to the short term and long term viability of the Abington community. The process for major land development begins with the Office of the Township Manager. For any individual or company beginning the process for a major land development in Abington, or to view land use resources and current subdivisions and land development applications, visit <https://www.abingtonpa.gov/landdevelopment>.

EMPLOYMENT OPPORTUNITIES

To view available job openings, visit www.abingtonpa.gov/jobs.

CITIZEN SERVICE REQUEST TOOL

Submit a non-emergency service request or report an issue to the Township through our online Citizen Service Request Tool at www.abingtonpa.gov/servicerequest. Submissions can be made at any time by phone, tablet, or computer. For more information including a step-by-step guide on how to submit a request, visit www.abingtonpa.gov/servicerequesttool.

Financial Services

Jeannette Hermann, Director
1176 Old York Road
Abington, PA 19001
267-536-1052

The Finance Office provides financial support services that aid the Board of Commissioners, Township Manager, and Departments in the decision-making process and in the common goal of providing the highest quality services at the lowest costs to the Township customers. The Department is also responsible for the facilitation and compilation of the Township budget, benefits administration, financial reporting, and the collection of delinquent user fees for unpaid sewer and refuse fees from the prior year.

BUDGET PROCESS

The Township's fiscal year is January 1 to December 31. The budget is evaluated year round by the Township Manager with strategic planning of the Board of Commissioners being conducted in early spring and used as a basis and driver for appropriation decision making, and as a guide for the Administration, and subsequently all departments. The formal adoption of the Fiscal Year Proposed Budget is typically scheduled for a public meeting in November, with final and official adoption no later than December 31 of each calendar year. To view this budget and past budgets, please visit <https://www.abingtonpa.gov/budget>.

ANNUAL COMPREHENSIVE FINANCIAL REPORT

The Certificate of Achievement for Excellence in Financial Reporting has been awarded to the Township of Abington by the Government Finance Officers Association of the United States and Canada (GFOA) for its annual comprehensive financial report. The Certificate of Achievement is the highest form of recognition in the area of governmental accounting and financial reporting management. To view the report, please visit www.abingtonpa.gov/annualfinancialreport.

Police

Patrick Molloy, Chief of Police
1166 Old York Road
Abington, PA 19001
267-536-1100
www.abingtonpd.org

The members of the Abington Township Police Department will be guided by the values of our community and will faithfully perform their duties in accordance with the United States Constitution, the International Code of Police Ethics, and all federal, state, and local laws. To help accomplish this mission, the Department has adopted the motto, "To Protect and Serve with PRIDE."

PROGRAMS



Information on programs, how to participate, or how to get involved can be found at www.abingtonpd.org. Popular programs and partnerships include:

- Auxiliary Police
- Bridge
- D.A.R.E.
- Lock for Life
- Citizens' Police Academy
- Citizens and Police Together (C.A.P.T.)
- Dog Walk and Watch Program
- Away Home Notification Program
- HUB
- Volunteers in Policing (V.I.P.)
- The Abington Police Athletic League (PAL)
- Abington Township Police Explorers
- Youth Aid Panel
- Abington Community Taskforce
- School Resource Officers
- Kids in Safety Seats (K.I.S.S.)
- Red Light Program



POLICE ATHLETIC LEAGUE (PAL)

The Abington Police Athletic League is a non-profit community organization that seeks to prevent juvenile crimes and violence, while encouraging personal growth among our young people. PAL centers, staffed by APD and community volunteers, offers structured, personal guidance in a safe and friendly environment. PAL offers a wide range of physical and intellectual activities that address the needs of Abington's youth. For more information, please visit www.abingtonpal.org.

ANIMAL CONTROL

The Animal Control Officer will respond to all sick, injured, or threatening animals.

Ron Griffith, Animal Control Officer

- 267-536-1100 ext. 1590
- rgriffith@abingtonpa.gov

DOGS ARE REQUIRED TO BE LICENSED AND TAGGED.

GET INVOLVED

The Department is always looking for volunteers to help us serve the community and grow our outreach. If you would like to learn more about the volunteer opportunities available, please contact Diane Harris at dharris@abingtonpa.gov.

STAY CONNECTED

Facebook: [@AbingtonTownshipPD](https://www.facebook.com/AbingtonTownshipPD)

Instagram: [@abingtonpolice](https://www.instagram.com/abingtonpolice)

X: [@AbingtonPolice](https://twitter.com/AbingtonPolice)

Website: www.abingtonpd.org

Email: abingtonpolice@abingtonpa.gov



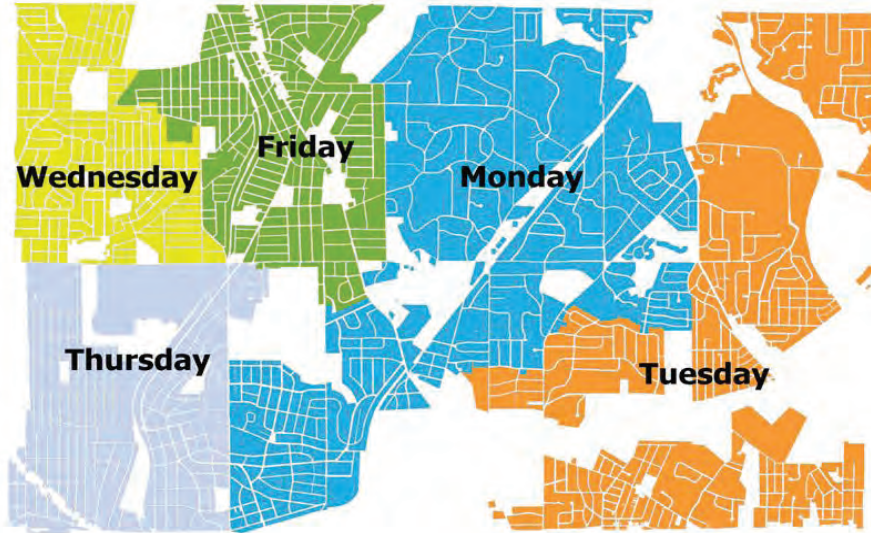
EMERGENCY: 9-1-1

NON-EMERGENCY: 267-536-1100

Public Works

Michael Jones, Director
2201 Florey Lane
Abington, PA 19001
267-536-1037
publicworks@abingtonpa.gov

Public Works is comprised of the highway division and refuse division. Public Works is responsible for providing efficient and effective street maintenance, residential waste and recyclables collection, street lighting, traffic control, snow and ice removal, leaf collection, mulch processing, stream/storm maintenance, vehicle maintenance, and related public services.



The above map illustrates the Township's trash collection days.

The Division collects trash, commingle, paper, and yard debris one day per week from each residential property, via an automated system. Trash, recycling, and yard debris should be placed curbside by 7 AM on your scheduled collection day and must be removed from curbside by 7 AM the following day. All carts should be placed by the curb facing the street and must be 3 feet from any object.

TRASH

TRASH CANS

Normal household refuse should be placed in the green trash cart provided by the Township. It comes in three sizes: 35, 65, or 95 gallons.

TRASH CAN EXCHANGE

For a fee, residents may exchange their trash cans for a larger or smaller size all year long.

EXCESS TRASH

Residents who occasionally have excess trash, may purchase blue bags, while supplies last, for \$.75 per bag at the Township's Highway Yard or the Abington Free Library. Residents can also schedule a large item pick up for black contractor bags at \$1 each by visiting abingtonpa.gov/largeitempickup or calling 267-536-1036.

LARGE ITEM PICK-UP

Abington has a large item pick-up service for a fee. Please visit abingtonpa.gov/largeitempickup.

RECYCLING

COMMINGLE RECYCLING

Clear and colored glass, aluminum, steel, tin cans, and plastics #1 through #7 should be placed in the blue commingle recycling can. Pick-up is on the same day that your trash is collected. No styrofoam; plastic films, bags, or cutlery; paper, coffee cup lids, straws, plastic 6-pack rings, or coat hangers.

PAPER RECYCLING

Put paper recyclables in your gray can and place curbside on your regular trash day. Collection includes all paper products. Cardboard must be broken down.

MULCH

Available in early spring for free resident pick-up at Baederwood Park, Crestmont Park, Alverthorpe Park, and the Public Works Yard.

CONTACT INFORMATION

Michael Jones,
Director

Mark Maxwell,
Superintendent, Refuse

Mark Rebelo,
Superintendent, Highway

2201 Florey Lane, Abington, PA 19001
Monday - Friday, 7 AM to 3:30 PM
267-536-1037
publicworks@abingtonpa.gov

LEAF COLLECTION
leafcollection@abingtonpa.gov

ROAD CONSTRUCTION
roadconstruction@abingtonpa.gov

SNOW REMOVAL
snowremoval@abingtonpa.gov

TRASH COLLECTION
trashcollection@abingtonpa.gov

POT HOLES
potholes@abingtonpa.gov

Report Public Works related issues or submit service requests online through our Citizen Service Request Tool at www.abingtonpa.gov/servicerequest.

YARD WASTE

Normal lawn and garden debris is collected year-round on resident's regularly scheduled trash and recycling collection day. Yard waste will only be accepted in 30 gallon brown biodegradable bags and/or 32 gallon maximum trash cans labeled YARD WASTE.

HOLIDAY TREES

Discard your trees on your regular trash days in January. Trees should be free of all decorations, wires, and tree stands.

Green Can - Trash
Blue Can - Commingle Recycling
Gray Can - Paper Recycling

SNOW REMOVAL

Property owners are responsible for removing snow and ice from all sidewalks in front of their properties within twenty-four hours after a snowfall. Residents may wish to clear their driveways after the last pass of the snowplow.

Recycling Events & Clean Out Weeks

CLEAN-OUT WEEKS: Twice a year, the Township will collect everything you place in your trash cans PLUS any additional normal trash placed in store bought refuse bags you put out with your regular trash on your SCHEDULED trash collection day. NO electronics, hazardous waste, construction material, or large items will be accepted.

SHREDDING EVENTS: Held two times per year, residents of Abington Township are encouraged to bring personal and confidential documents and files to the Township's free shredding events at 2201 Florey Lane, Abington, PA 19001.

"ANYTHING WITH A PLUG" RECYCLING EVENTS: Electronics collections are held two times per year at the Public Works Highway Yard, 2201 Florey Lane. Please note: there is a fee for TV's and monitors.

HAZARDOUS WASTE COLLECTION EVENTS: Montgomery County holds seven hazardous waste collection events with one taking place in Abington Township.

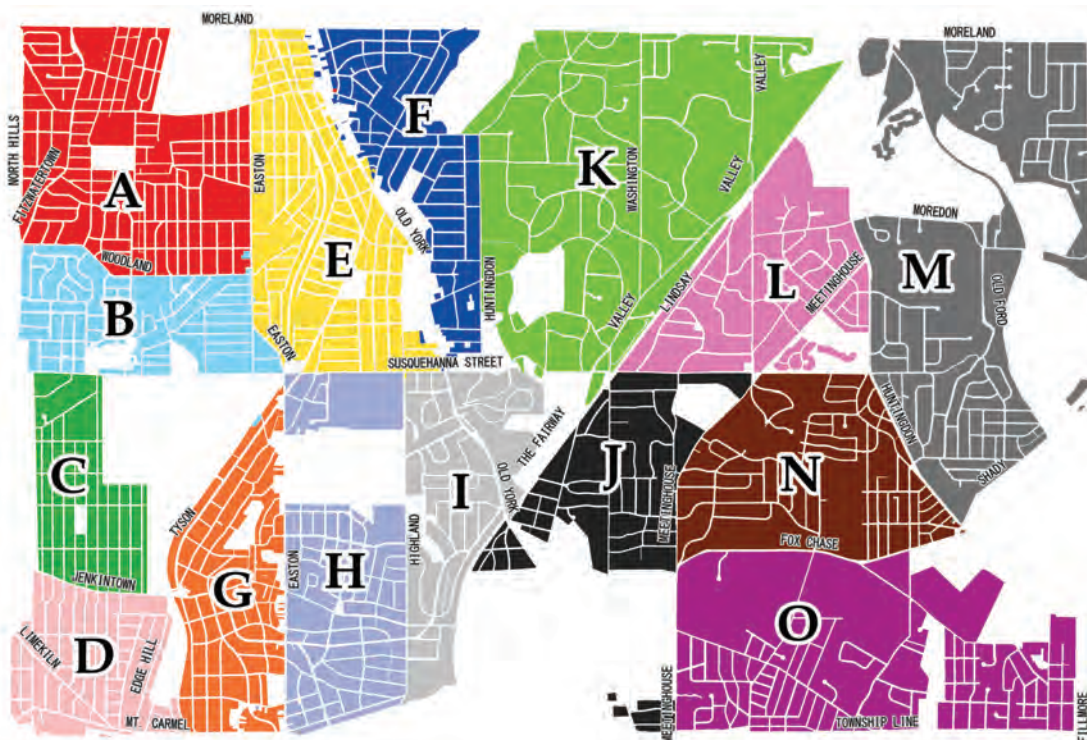
More information at www.abingtonpa.gov/pwevents



For more information, please visit the F.A.Q. on page 22.

LEAF COLLECTION

Beginning the end of October through December, the Public Works Department conducts curbside leaf pickup with vacuum machines. Leaves should be placed curbside by each Monday of the designated week of pickup. The Department will make every attempt to maintain the schedule, but residents should be prepared for delays due to inclement weather. Conversely, there will be times when the collection runs smoothly thereby enabling a jump start on the next area. If this is the case, the vacuum machines will return on Monday for the scheduled collection. Below is a map of the collection areas. To view the map and schedule online, please visit www.abingtonpa.gov/leafcollectionmap.



Fire & Emergency Management Services

Tom McAneney, Director
Chris Platz, Fire Marshal
1176 Old York Road,
Abington, PA 19001
267-536-1057

The Township of Abington Fire and Emergency Management Services consists of the Director of Fire and Emergency Management Services, Fire Marshal, and five volunteer fire companies, Abington, McKinley, Weldon, Edge Hill, and Roslyn, that together, make up the Abington Township Fire Department (ATFD).

The five fire companies of the ATFD work collaboratively to provide the highest quality fire and rescue services to Township residents, businesses and visitors. The ATFD is the only all-volunteer fire department in the United States to achieve accreditation through the Center for Public Safety Excellence. In order to maintain this accreditation, our volunteers must be competent in several hundred core competencies and performance indicators that are evaluated on an annual basis, culminating in a site visit every five years.



STAY CONNECTED!

www.abingtonfd.org

Facebook: @AbingtonTownshipFireDepartment

firemarshal@abingtonpa.gov

FIRE COMPANIES



ABINGTON FIRE COMPANY

1920 Horace Avenue, Abington

215-572-0312

Chief Michael A. Jones



EDGE HILL FIRE COMPANY

2843 Limekiln Pike, North Hills

215-885-7178

Chief Frank Schuck



MCKINLEY FIRE COMPANY

893 Jenkintown Road, Elkins Park

215-572-6096

Chief Shawn D. Philipsen



ROSLYN FIRE COMPANY

1128 Bradfield Road, Roslyn

215-885-4490

Chief Matthew Orzechowski



WELDON FIRE COMPANY

412 North Easton Road, Glenside

215-886-2373

Chief Keith Maslin

VOLUNTEER

The ATFD is an all-volunteer fire department, and we are always looking to welcome new members, starting at the age of 16. All PPE, training and equipment is provided free of charge. All new members receive training to become nationally certified firefighters at our own fire training facility located here in Abington. To learn more about joining the ATFD as a firefighter or non-emergency volunteer, visit www.abingtonfd.org or call 267-536-1055.

FRIENDLY REMINDERS

- If you use a wood burning stove or fireplace, always ensure the ashes are placed in a metal container, outside the home, for two days prior to emptying in the trash.
- Have your heaters and chimneys inspected and cleaned on a regular basis.
- Change the batteries in your smoke detectors twice per year.
- Install a carbon monoxide detector.
- NEVER try to walk, swim or drive through flood waters.
- If you live in a flood prone area, plan ahead. Identify where you can go if you need to evacuate.

EMERGENCY NOTIFICATIONS

REGISTER AT WWW.READYMONTCO.ORG

Please take a minute to register yourself and family members for this important emergency notification service.

- Receive emergency, community, weather and crime notifications
- User's choose their preferred delivery methods - text message, email, smartphone app and /or voice call to your mobile devices and landline phone
- Message can be targeted by geographical area (such as residents living in flood prone areas or on snow emergency routes) or a person's special needs

IMPORTANT PHONE NUMBERS

EMERGENCY: 9-1-1

NON-EMERGENCY: 267-536-1057 or 1059

Poison Information Center: 215-386-2100

Peco Gas and Electric: 1-800-841-4141

Aqua Pennsylvania: 877-987-2782

American Red Cross: 215-299-4000

CODE DIVISION POLICY

All construction projects within the Township of Abington are subject to the requirements of the 2018 Uniform Construction Code and the Zoning Ordinance of the Township of Abington. Applications must be complete at the time of submission.

All contractors, plumbers, electricians and other mechanics are required to register with the Code Enforcement Office and/or the PA Attorney General's Office. Proof of liability and workers compensation insurance is required and the Township of Abington must be listed as certificate holder. Please contact us at **267-536-1000, prompt 4** for additional information.

CONTACT US

Code Enforcement Division

Phone: 267-536-1000, prompt 4

Email: codeenforcement@abingtonpa.gov

PERMITS

Building and/or zoning permits, plus inspections are required for the following type of work on both residential and commercial properties. Permits may now be submitted online at www.abingtonpa.gov/permits.

- Roofing
- Fireplaces
- Wood Stoves
- Air Conditioning
- Retaining Walls
- Dumpsters
- Fences
- Patios
- Decks
- Heating
- Additions
- Garages
- Driveways
- Signs
- Alterations
- Curbs & Sidewalks
- Plumbing
- Grading
- Emergency Generators
- Portable Storage Units
- Sheds
- Siding
- Pools
- Electrical
- Demolition
- Walkways
- Stormwater Management*

* Stormwater permits are handled by Engineering.

INSPECTIONS

Inspections are required for many types of work. Please contact the Code Office at least 48 hours prior to the day you would like an inspection. Please note, electrical inspections are conducted by third party inspectors as selected on your permit application. Please contact them directly to schedule your inspections.

PROPERTY MAINTENANCE

A reminder to all property owners that both the interior and exterior of the property must be maintained in good repair, structurally sound, and sanitary, so it does not pose a threat to the public health, safety, and/or welfare. Some property owner responsibilities include:

- Complete all repairs in an approved manner, using proper materials in accordance with all applicable codes.
- Keep the exterior free of broken glass, loose roofing and siding shingles, peeling paint, and crumbling stone or bricks.
- Maintain doors and windows, including storm doors and screens. Functional doors and windows may be critical in emergency situations.
- Maintain driveways and walkways in proper states of repair, free of hazardous conditions.
- Maintain property free of rodents and parasites.
- Keep all yards or lots free of unsightly materials, debris, and junk materials which may cause fire hazards or may act as breeding places for vermin and insects.
- Properly dispose of garbage in containers with lids.
- Take care of pets, don't allow them to run free, and clean up their waste daily.
- Cut and trim all trees, weeds, hedges, shrubbery, and underbrush abutting on the streets or sidewalks. Provide at all times a clear passage of eight (8') feet above the sidewalks and fourteen (14') feet above the street.
- Properly maintain all vehicles. It is against the law to keep or store any vehicle on either a public street or on a private property which is not operable or which does not have a current license plate and/or current registration.

Complaints and concerns on property maintenance issues can be made online via the Citizen Service Request Tool at www.abingtonpa.gov/servicerequest.

Community Development

Kimberly Hamm, Director
1176 Old York Road
Abington, PA 19001
267-536-1000, prompt 5

communitydevelopment@abingtonpa.gov

The Community Development Department aims to build a stronger and more resilient Abington via the administration of the Township's state and federal programs of the U.S. Department of Housing and Urban Development (HUD). Activities will vary with the Township's most pressing needs, and may address needs such as infrastructure, economic development projects, public facilities installation and improvement, community centers, housing rehabilitation, public services, and more.

Be sure to check Community Development's webpage at www.abingtonpa.gov/CD for information on upcoming programs like:

- Financial Literacy Workshops
- Homeowner Rehabilitations Programs
- Rent & Mortgage Assistance
- Fair Housing Education
- Free Lunches for Children

You can find information on active and completed projects on the Community Development Projects Dashboard. Projects depicted are from 2015 to date. The Dashboard can be found at: www.abingtonpa.gov/CDmap

Library

Elizabeth Fitzgerald, Director
215-885-5180
abingtonlibrary@mclinc.org
www.abingtonfreelibrary.org

Abington Township Public Library serves people who live, work, or attend school in Abington Township and Rockledge Borough with two convenient locations: Abington Free Library and Roslyn Library.

LOCATIONS

ABINGTON LIBRARY
1030 Old York Road
Abington, PA 19001
215-885-5180

Hours of Operation:

Monday - Thursday: 9:30 AM - 9 PM
Friday - Saturday: 9:30 AM - 5 PM
Sunday: 1 - 5 PM

ROSLYN LIBRARY

2412 Avondale Avenue
Roslyn, PA 19001
215-886-9818

Hours of Operation:

Monday: 11 AM - 9 PM
Tuesday/Thursday: 11 AM - 6 PM
Friday: 11 AM - 5 PM
Saturday: 10 AM - 2 PM

GET A CARD

Free for anyone who lives, works, or attends school in Abington Township or Rockledge Borough! A parent or guardian must be present to sign up for anyone under 18. To learn how to apply, visit: abingtonfreelibrary.org/get-library-card.

PROGRAMS & EVENTS

The Abington and Roslyn libraries host programs and events year-round for all ages such as arts and culture programs, book and movie discussions, storytimes, and crafts. Information can be found at abingtonfreelibrary.org/events.



**Abington Township
Public Library**



QUESTIONS?

Email: abingtonlibrary@mclinc.org

Call: 215-885-5180

WHAT'S OFFERED?

- 50+ digital media and streaming services like the Philadelphia Inquirer, Libby, hoopla, Kanopy, Ancestry.com, Consumer Reports, New York Times and NYT Cooking, and so much more
- Public computers, laptops, and iPads
- Copy, scan, and print—from your device or ours
- Free Wi-Fi plus connected Chromebooks and HotSpots to borrow
- Check out a Museum Pass, pickleball set, turntable, birding backpack, or jigsaw puzzle
- Designated areas for teens and children at the Abington Library
- Quiet study room and group study rooms
- Community rooms available to rent
- One-on-one computer help
- Adult Literary and ESL Classes
- Summer Reading for all ages
- Teen Advisory Board and Q-Crew

BOOKCELLAR

The Friends of the Abington Township Public Library run a bookstore at the Abington Free Library's lower level. You'll find a wonderful selection of gently-used books for adults, teens, and kids, and DVDs - all for bargain prices. For more information on the Book Cellar, including hours, see abingtonfreelibrary.org/bookcellar.

STAY CONNECTED

Website: www.abingtonfreelibrary.org

Email: abingtonlibrary@mclinc.org

Facebook: [@AbingtonLibrary](https://www.facebook.com/AbingtonLibrary)

Instagram: [@AbingtonLibrary](https://www.instagram.com/AbingtonLibrary)

TikTok: [@atplibraries](https://www.tiktok.com/@atplibraries)

Parks & Recreation

Jessica Tholey, Director
 515 Meetinghouse Road
 Jenkintown, PA 19046
 215-576-5213
parksinfo@abingtonpa.gov

Abington Township is home to over 30 public parks, including a skate park, two swimming pools, a nature center with a museum and bird observatory, a bird reserve, and more. The Department runs programs at its facilities year-round for children, teens, adults, and seniors. Programming information can be found at www.abingtonpa.gov/pr.



TOWNSHIP PARKS

For a full list of Township parks, please visit www.abingtonpa.gov/pr.

ALVERTHORPE
 498 Forrest Ave.

CRESTMONT
 2595 Rubicam Ave.

HALLOWELL
 1900 Kenmore Ave.

NORTH HILLS
 Tennis & Pine Ave.

ARDSLEY
 Tennis & Jefferson Ave.

**EDMUND R. MICCIOLO
 MEMORIAL PARK**
 1001 Old York Rd.

JACKSON
 Sherwood Ave.

PENBRYN
 300 Houston Ave.

ARDSLEY WILDLIFE SANCTUARY
 Maple & Jefferson Ave.

ELK STREET
 419 Elk Ave.

KAREBROOK
 Cox & Valley Rd.

ROCKWELL
 Rockwell & Stratford Ave.

BAEDERWOOD
 Highland Ave.

ETHEL JORDAN
 Jenkintown Rd. & Osceola Ave.

LORIMER (COUNTY PARK)
 183 Moredon Rd.

ROSLYN
 Osbourne & Anzac Ave.

BRIAR BUSH
 1212 Edge Hill Rd.

EVERGREEN MANOR
 Luken & Phipps Ave.

MANOR WOODS
 Forrest & Douglass Ave.

ROYCHESTER
 1837 Harding Ave.

CONWAY
 911 G Ave.

FOX CHASE MANOR
 717 Fox Chase Rd.

**MEADOWBROOK BIRD
 SANCTUARY**
 Meadowbrook Rd. & Washington Ln.

RUBICAM
 Rubicam & Franklin Ave.

ALVERTHORPE PARK offers many amenities including:

- Bike Pike (1.7 miles)
- Fishing
- Wading Pool
- Miniature Golf
- Par-Three Golf
- Pavilion Rentals
- Baseball Fields
- Basketball Courts
- Tennis Courts
- Playgrounds
- Grills
- Nature Areas

Please note: Alverthorpe Park is open to Township residents ONLY. To access the park, a form of identification showing residency is required. Residents are able to bring non-resident guests.



PATRICK KERR MEMORIAL SKATEBOARDING FACILITY
 Located in Roslyn Park, Patrick Kerr Skate Park is open everyday, weather permitting, from 11 AM to dusk. If the gates are locked, the park is closed. All users must wear a helmet at all times while in the skate park. Use of the facility is at your own risk. For more information regarding the park, including skate and bike park rules and its history, please visit www.abingtonpa.gov/skatepark.

ARCATS

Trips, luncheons, and holiday parties are just a few of the ARCATS (Alverthorpe Retired Citizens of Abington Township) activities. Anyone 55 years of age and older interested in ARCATS membership can call the Parks and Recreation office at 215-576-5213.

FACILITY RENTALS

Please call 215-576-5213 for rules and regulations related to the use of each facility.



ARDSLEY COMMUNITY CENTER

2828 Spear Avenue
Ardsley, PA 19038

Contact information for pricing:
215-576-1630

- Available for rent are classrooms, a cafeteria, and a gymnasium.



CRESTMONT CLUBHOUSE

2595 Rubicam Avenue
Willow Grove, PA 19090

Contact information for pricing:
215-576-5213

- Rentals of the clubhouse are exclusive to Abington residents ONLY.



ALVERTHORPE PARK

498 Forrest Avenue
Jenkintown, PA 19046

Contact information for pricing:
215-884-6538

- Rentals include a picnic shelter, mini-golf pavilion, pre-school pavilion, and camp sites.

POOL INFORMATION

Abington Township has two pool facilities:

CRESTMONT POOL

2595 Rubicam Avenue
Willow Grove, PA 19090

PENBRYN POOL

200 Houston Avenue
Glenside, PA 19038

For membership types, registration, pool hours, and pool rules, please visit www.abingtonpa.gov/pools.



DISCOUNT TICKETS

Discounted tickets to various recreational activities including amusement parks, museums, movies, ski resorts, and more are available for purchase at the Parks and Recreation office at 515 Meetinghouse Road. Savings range from \$2 - \$40 per ticket. Availability and prices are subject to change.

PROGRAMS

The Township publishes two program activity guides per year: Fall/Winter edition and a Spring/Summer edition. Please remember to register early, as programs fill quickly. If a program does not have enough participants, it may be cancelled. Registrations can be done online or mailed in. To view the guides and registration instructions, please visit abingtonpa.gov/prguide.



Briar Bush Nature Center

Mark Fallon, Director
1212 Edge Hill Road
Abington, PA 19001
215-887-6603
www.briarbush.org

Briar Bush Nature Center is a rich oasis and a gem of the Abington Township park system. Our doors and grounds are open to all residents and guests.



Welcoming you to a world of wonders!

CONTACT INFORMATION

1212 Edge Hill Road, Abington, PA 19001
215-887-6603
info@briarbush.org
www.briarbush.org

MUSEUM HOURS & ADMISSION

Open Daily: 10 AM - 4 PM
Business Hours: 9 AM - 5 PM
Abington Residents/FOBB Members: FREE
Others: Pay what you can.

BECOME A MEMBER!

Friends of Briar Bush (FOBB) membership is available at many levels. Visit our website for more information.

BENEFITS OF MEMBERSHIP INCLUDE:

- Discounts on programs and summer camps
- Discounts in the Nature Shop
- A subscription to our newsletter
- Invitations to member-only events
- Facility rentals for birthday parties or other celebrations



Come Explore Our:

Dede Long Nature Museum: Includes a variety of animal ambassadors, nature exhibits, and a play area dedicated for our youngest visitors.

Forested Trails: 12 acres of trails lined with thick logs and mulched for easy walking.

Griscom Bird Observatory: A peaceful cabin with a panoramic window that looks out onto a bird habitat. The observatory houses exhibits for all ages that highlight bird identification, migration, and citizen science. The observatory is open during regular museum hours.

Nature Playscape: A natural play-area complete with water play, sandpit, stick tunnel, balance logs and natural benches.

Pond: Explore the life at the pond during every season.

Group and Public Programs: For all ages! Abington Residents receive a 10% program discount. Friends of Briar Bush Members receive a 20% discount.

Wastewater

George Wrigley, Director
1000 Fitzwatertown Road
Roslyn, PA 19001
215-884-8329
abingtonwwud@abingtonpa.gov

The Wastewater Utilities Department is responsible for the continuous safe, environmentally protective and financially stable operation of the sanitary sewer collection system in accordance with PaDEP and U.S EPA permits and regulations.

AVOID CLOGGED PIPES!

Sanitary sewer pipes are sized for water flow. Prevent clogs by placing any foreign object in the trash and not down the drain. These items will easily clog the pipes and cause a backup into your basement or first floor sinks and toilets. Please respect your neighbors by not flushing these objects into the sewers to prevent blockages. Most common sources of clogs include:

- Cleaning or baby wipes
- Paper towels, rags or cloths
- Plastic items
- Garbage from kitchen disposal
- Cooking oils and grease

If you and your neighbors are all experiencing backups or slow draining pipes, the sewer main is most likely blocked. If only your drain is backing up or slow, you will need to hire a plumber to clean the pipes and remove the blockage. If the sewer main is blocked or you see water flowing out of a manhole, call 215-884-8329 to report the problem.

TIPS FOR CONSERVING WATER

Sanitary sewer bills use the water consumption to calculate the fee. Less water means lower sewer fees.

In the Bathroom

- Make sure toilet is an ultra-low flush model (1.6 gallons per flush).
- Check your toilet for leaks. Put dye tablets or food coloring into the tank. If color appears in the bowl without flushing, there's a leak that should be repaired.

In the Kitchen

- If you wash dishes by hand, don't leave the rinse water running, and use the least amount of detergent possible.
- Don't defrost frozen foods with running water.
- Use the garbage disposal less and compost your organic wastes.

Outsides

- Mulch around trees and plants (but not too deeply) to reduce evaporation.
- If you have a pool, use a pool cover.
- Water during the early morning; don't water the lawn on windy days.
- Set lawn mower blades one notch higher. Longer grass means less evaporation.

Engineering Services

Tim Clark, Director
1176 Old York Road
Abington, PA 19001
267-536-1043
engineering@abingtonpa.gov

The Engineering Department provides general engineering services and oversight for capital and non-capital projects and Township infrastructure; coordinates applications for and the administration of grants; effectively addresses stormwater, infrastructure and state mandated MS4 issues, and develops projects to construct and maintain ongoing stormwater issues throughout the Township.

THE DRAIN IS JUST FOR RAIN!

Stormwater runoff is one of the leading causes of water pollution, not only in Abington Township, but across the nation. Many residents in Abington are unaware that storm drains carry runoff directly to the nearest stream instead of connecting to a treatment plant to get cleaned first. Since 2003, the Pennsylvania Department of Environmental Protection has permitted the Township's Stormwater System and has implemented standards and requirements intended to help clean up Abington's impaired streams.

We all can do our part to help with restoring the health of our streams. The most basic way to help is to never dump anything you wouldn't drink or swim in directly or indirectly down a storm drain. Things you can do include:

- Installing Rain Barrels at our homes to cut down on stormwater runoff.
- Don't throw grass, leaves, or trash in the storm inlets or in the street.
- Use less fertilizer on lawns.
- Recycle used oil.
- Pick up pet waste.
- Dispose of household hazardous waste responsibly.

The Abington Township Human Relations Commission (Abington HRC) was established in 2012 following passage of Abington Ordinance 2029, which prohibits discrimination in housing, employment, and public accommodations. The Ordinance expressly prohibits such discrimination based on age, ancestry, color, disability or use or training of guide animals, familial status, gender, national origin, race, religious creed, and sexual orientation, gender identity or gender expression.



The Abington HRC's Mission Statement is:

"Abington Township and the HRC recognize the inherent dignity and worth of all people. Therefore, the HRC strives to ensure, through education, mediation, and community outreach, that all members of the community enjoy equality and equal protection under the law."

While the HRC is prepared to help mediate complaints of discrimination, these have been infrequent. As a result, the HRC has focused its efforts on community education and outreach, in the belief that better understanding community members who are different from you leads to less fear and misunderstanding and greater respect and acceptance. Examples of such programs include one on "Understanding Critical Race Theory" and one on "It's OK to Say Gay...and Queer...and Trans." The HRC also responds to incidents in the community that demonstrate a lack of tolerance of others. For example, following a drop of antisemitic literature in certain neighborhoods, the HRC issued a statement strongly condemning this action and urging residents not to give a voice to the perpetrators by sharing the material more broadly.

The Abington HRC is comprised of seven volunteer Township residents appointed by the Abington Board of Commissioners for three-year terms. It is a non-partisan body and its services are free to the public.

MEETINGS

Meetings are generally held the first Wednesday of each month at 7 pm via webinar and all are invited to attend using the following log in information:

- Join by computer, tablet, or application: <https://us06web.zoom.us/j/84247038479>
- Join by telephone: 1-929-436-2866 and entering the meeting ID number 842-4703-8479 when prompted.
- Meeting ID: 842-4703-8479

CONTACT INFORMATION

Website: www.abingtonpa.gov/HRC

Facebook: www.facebook.com/AbingtonHRC

Instagram: www.instagram.com/abingtontownshiphrc

If you have a particular request or need regarding a community education topic or situation, we want to hear from you! You can reach us via our Facebook page or by directly emailing us at **HRC@AbingtonPA.gov**.

Shade Tree Commission

stc@abingtonpa.gov
www.abingtonpa.gov/stc

We seek to preserve and enhance Abington Township's urban forest and the essential ecosystem services that trees uniquely provide.



*Put down roots in
Abington Township!*

CONTACT INFORMATION

www.abingtonpa.gov/stc
stc@abingtonpa.gov
[@AbingtonTrees](https://www.facebook.com/AbingtonTrees)

MEETINGS

Second Tuesday of each month at 7:30 p.m. online.
Link to meeting: www.abingtonpa.gov/stc

MASTER TREE ACTION PLAN



Scan or look for the link on:
www.abingtonpa.gov/stc

New to Abington Township? Welcome!

Trees are important parts of our properties and bring numerous benefits to our homes and neighborhoods. Mature trees increase property values, save us money on home energy costs, capture storm water which reduces flooding risk, and provide valuable habitat to native wildlife. Trees improve physical and mental health, reduce air pollution, reduce the risk of respiratory disorders such as asthma, and improve children's educational outcomes. Neighborhoods with more trees even have lower rates of crime. Discover the many benefits on our website.

Free trees? Yes, please!

As an Abington Township homeowner, you are entitled to free trees each year during our tree giveaways in the spring and fall. Sign up for the STC Newsletter to receive updates about these giveaways and more.

Tree Care

Like all other parts of your property, maintaining and caring for trees is your responsibility, not the Township's. Always consult with an arborist certified by the International Society of Arboriculture (ISA); an arborist can help you identify and care for your valuable trees to ensure they remain healthy and safe. Visit our website to find local tree care companies with certified arborists.

Join us!

We encourage you to contact the STC, join our online meetings, and to volunteer to make Abington an even more desirable place to live and grow.



Research the best trees for your property, the energy and health benefits of having trees, caring for trees, plus FREE tree giveaways!



WAIT! BEFORE YOU CUT DOWN THAT TREE:

New homeowners can be unfamiliar with trees and sometimes cut down healthy, valuable trees. *Please don't make that mistake.* Trees take decades to mature but mere minutes to destroy. Consider future generations when contemplating tree removal.

Before removing a tree, consult an ISA-certified arborist.

Our website has helpful information about how to find an ISA-certified arborist, as well as tips about tree maintenance and leaf cleanup.

New Resident Check List

NOTIFY POST OFFICE OF ADDRESS CHANGE

- **Abington:** 1925 Keith Rd., Abington, PA 19001
215-887-2395
- **Elkins Park:** 1800 Ashbourne Rd., Elkins Park, PA 19027
215-887-1751
- **Glenside:** 262 S. Easton Rd., Glenside, PA 19038
215-884-3059
- **Jenkintown:** 601 West Ave., Jenkintown, PA 19046
215-887-0936
- **Lower Moreland:** 830 Welsh Rd., Huntingdon Valley, PA 19001
215-947-1828
- **Roslyn:** 1302 Easton Rd., Abington, PA 19001
215-887-4521
- **Rydal:** 1470 Susquehanna Rd., Jenkintown, PA 19046
215-886-7984
- **Willow Grove:** 611 Easton Rd., Willow Grove, PA 19001
215-659-3434

SET UP YOUR UTILITIES

- Aqua:** Abington Township's main public water provider is Aqua America, Inc. Visit their website at <https://bit.ly/3wQt0OD>. Some properties may be on a private water supply. Information about wells can be found at Montgomery County's website at <https://bit.ly/3g1VGxg>. A minimal number of properties are serviced by the Philadelphia Water Department.
- PECO:** Abington Township's electric and gas services are provided by PECO. Learn more by visiting their website at www.peco.com.
- Telecommunications:** Internet, cable, telephone and other services can be provided by several different providers in the Township. The Government Access Channel is provided through Verizon and Comcast.
 - Comcast: <https://www.xfinity.com>
 - Verizon: <https://vz.to/2SSf1sP>

CHANGE YOUR DRIVER'S LICENSE AND CAR REGISTRATION

- To find a PennDOT Driver's License and Photo Center, residents can visit PennDOT's Location Info Center webtool by visiting <https://bit.ly/3ifvHVW>.
- To view PennDOT's Info for New Residents webpage, visit <https://bit.ly/2SSMVhh>.

PUBLIC SCHOOL REGISTRATION

- Abington School District is the public school district serving all of Abington Township. New students must be registered. For more information, please visit the School District's *Procedures for Registering Students Who are New* webpage at <https://bit.ly/3uUkz3y>
- View a map of Attendance Zones at <https://bit.ly/3ceZjyR>

DOG LICENSE APPLICATION

According to the Pennsylvania Department of Agriculture, all dogs three months or older must be licensed. There are two types of licenses:

1. Annual: Must be submitted by January 1st.
 - Visit the Pennsylvania Department of Agriculture's License Your Dog in PA webpage at <https://bit.ly/3g8uKMd>.
2. Lifetime: Dog must be tattooed or micro-chipped.
 - This program is run by the Montgomery County Treasurer's Office. Visit Montgomery County's dog license webpage at <https://bit.ly/3fNdjSE>.

TAX OFFICE INFORMATION

Jay W. Blumenthal, Tax Collector
Abington Township Municipal Building
1176 Old York Road,
Abington, PA 19001
Phone: 267-536-1024
Fax: 215-572-3935
Email: jblumenthal@abingtonpa.gov

TAX OFFICE HOURS

Monday - Thursday, 8 AM to 5 PM
Friday, 8 AM to 4 PM
Saturday - Sunday, Closed

Delinquent Taxes and Fees

Any tax bill not paid by December 31 is turned over to an outside agency for collection. Delinquent taxes/fees are collected by:

Township/County/School Taxes:

- Montgomery County Tax Claim Bureau (610-278-1216) and/or
- Portnoff Law Associates (866-211-9466)

Sewer Rents/Refuse Fees:

- Abington Township Finance Department (267-536-1049)

Stay Connected

Email: Sign-up for notifications and reminders to be sent to your email. Join by emailing jblumenthal@abingtonpa.gov and requesting to join.

Webpage: www.abingtonpa.gov/taxoffice

For more tax information, view the extended online edition of this guide at www.abingtonpa.gov/newresidentguide.

Voter Services

VOTER QUALIFICATIONS

To register in Pennsylvania, you must be:

- A U.S. citizen for at least one month before Election Day.
- A resident of Pennsylvania and your County and Election District for at least 30 days before Election Day.
- Age 18 or older on or before the date of the next Election Day.

REGISTRATION

Register or re-register if you are not currently registered, have not voted at least once during the last two calendar years, wish to change your political party affiliation, or have moved. Residents must register at least 30 days prior to an election. Military personnel may apply at any time. There are three ways to register:

IN PERSON: Apply in person at the Montgomery County Voter Registration Office (Norristown) or at PennDOT photo or Driver License Centers and other select government agencies.

ONLINE: Apply online by visiting www.pavoterservices.pa.gov

BY MAIL: Apply by mail by submitting a completed Pennsylvania Voter Registration Application to the Montgomery County Voter Registration Office.

Montgomery County Voter Services
PO Box 311
Norristown, PA 19404-0311
610-278-3280

ABSENTEE AND MAIL IN VOTING

Residents have two options for mail in ballots in Montgomery County: absentee and mail-in ballots.

ABSENTEE BALLOT: For residents who will be away during the election and are unable to vote in person, or have a disability or illness.

MAIL-IN BALLOT: For all other voters who wish to vote by mail, but are not an absentee voter.

REQUESTING A BALLOT: Residents can apply for an absentee or mail in ballot online, by mail, or at designated locations. For more information and important deadlines, please visit www.votespa.com.

Learn more at VOTESPA.COM

ELECTED OFFICIALS

UNITED STATES SENATE

Bob Casey (D)
200 N. Third St., Suite 14A, Harrisburg, PA 17101
717-231-7540

John Fetterman (D)
200 Chestnut Street, Suite 600, Philadelphia, PA 19106
215-241-1090

UNITED STATES HOUSE OF REPRESENTATIVES

Madeleine Dean (D)
4th Congressional District
115 E. Glenside Ave., Suite 1, Glenside, PA 19038
215-884-4300

PENNSYLVANIA GOVERNOR

Josh Shapiro (D)
508 Main Capitol Building, Harrisburg, PA 17120
717-787-2500

PENNSYLVANIA SENATE

Arthur L. Haywood (D)
Senatorial District 4
1168 Easton Rd., Roslyn, PA 19001
215-517-1434

PENNSYLVANIA HOUSE OF REPRESENTATIVES

Nancy Guent (D)
PA Legislative District 152
19. S. York Rd., Hatboro, PA 19040
215-259-5856

Benjamin V. Sanchez
PA Legislative District 153
1175 Old York Rd., Abington, PA 19001
215-517-6800

MONTGOMERY COUNTY COMMISSIONERS

Jamila Winder (D)
Neil Makhija (D)
Thomas DiBello (R)
Montgomery County Courthouse
Norristown, PA 19404
610-278-3000

DISTRICT JUDGES

John D. Kessler
District 38-1-04
1150 Old York Rd., Abington, PA 19001
215-887-2362

Juanita A. Price
District 38-1-05
117 York Rd., Suite 100 C, Jenkintown, PA 19046
215-885-4120

F.A.Q.

CODE ENFORCEMENT

Q: Am I allowed to grow bamboo on my property?

A: Private property owners are permitted to grow bamboo on their property, under certain conditions. The root structure of bamboo is not permitted to grow within 10 feet of any pavement, sidewalk or public road within the Township. Bamboo is permitted to grow up to the property lines separating private properties, but the bamboo owner is required to contain the bamboo on their property, as outlined in the Township Code.

Q: How high am I allowed to grow my grass?

A: Grass and weeds must be maintained below 10 inches in height at all times.

Q: My neighbor's tree is unkept, who should I contact?

A: The Township doesn't regulate the maintenance of trees on private property. It is an owner's responsibility to provide for the safety of trees on their property. If a tree loses its limbs or falls, it is the responsibility of the property owner where the debris landed to clean-up the debris.

Q: My neighbors property is overgrown. Who do I contact?

A: Please contact 267-536-1000 ext. 4 to make a report or submit one online at www.abingtonpa.gov/servicerequest.

Q: Who is responsible for maintaining the sidewalk?

A: Property owners are responsible for ensuring upkeep and maintenance of curbs and sidewalks.

Q: Who is responsible for street trees?

A: Property owners are responsible for the maintenance of any street trees adjoining their property. Trees and other vegetation should be maintained so that there is a minimum of 8' clearance above the public sidewalk and 14' of clearance above the roadway.

COMMUNITY DEVELOPMENT

Q: What is the Summer Youth Meals Program?

A: The Abington Township Summer Youth Meals Program is a federally-funded program that provides a FREE nutritious lunch to any child 18 years of age or younger. The program typically begins in June and runs through August. More information at www.abingtonpa.gov/cd.

Q: What is the Home Rehabilitation Program?

A: A federally-funded residential rehabilitation (repair) program that aims to help low and moderate income homeowners and qualifying seniors address code standard deficiencies in their Abington residence. For more information and learn if you qualify, visit our website, send us an email, or give us a call.

Q: How do I apply for rent or mortgage assistance?

A: The Township will open rounds of funding, when funds are available for qualifying residents. For more information and to get on our contact list, visit our website, send us an email, or give us a call.

Q: How do I submit my idea/nonprofit organization/project for consideration of Community Development Block Grant (CDBG) funding or other sources of funding?

A: Each year, the Township will conduct various hearings, surveys, and outreach to assess the wants and needs of our community and the various organizations that help to serve our residents. We encourage all Abington residents and organizations that serve the residents of our Township

to participate in these activities to help inform our funding plans.

EMERGENCY MANAGEMENT

Q: How do I report a power outage to PECO?

A: Call the outage hotline at 1-800-841-4141 or visit the PECO website at <https://bit.ly/3z9e54b>.

Q: How do I report a downed power line?

A: Downed power lines should be treated as an EMERGENCY. Call 9-1-1 immediately.

Q: Does Abington Township have an emergency notification system?

A: Yes, the Township uses a system powered by Montgomery County called ReadyMontco. By signing up, residents will receive notifications about emergencies, severe weather, crime alerts, and disasters in Montgomery County. [Sign up today at www.readymontco.org](http://www.readymontco.org).

ENGINEERING

Q: Do I have to register my deed with the Township when I purchase my property?

A: No. Abington Township no longer requires deeds to be registered with the Township. However, a Smoke Detector Affidavit is required. Please contact 267-536-1057 if you have any questions or concerns.

Q: Can I get a copy of the current deed for my property from the Township?

A: To receive a copy of your deed, you may contact the "Right-To-Know" office at 267-536-1002 or righttoknow@abingtonpa.gov.

Q: How can I get a copy of the plot plan for my property?

A: In most cases, the Township will have a copy of a plot plan for your property. If you are having work done on your property and need a copy of your plot plan, contact the Engineering Department and we will be glad to see if we have one and get a copy to you.

Q: If I am building a shed or expanding my driveway, do I also need a Stormwater Permit?

A: Yes. Federal and State regulations state that we must follow strict MS4 guidelines. The Township requires MS4/Stormwater Management for any property owner and project in which the applicant is proposing additional impervious surface. Projects where the applicant is constructing an impervious object or surface like a shed, addition, driveway, pool, walkway, or anything covered by impenetrable materials such as asphalt, concrete or most building materials, are an environmental concern because it eliminates rainwater infiltration and natural groundwater recharge and creates additional stormwater flow onto neighboring properties, streets and/or storm networks. If your project is under 250 s.f., the Township allows homeowners to use rain barrels as a means of stormwater control. Any project over 250 s.f., a more extensive stormwater management system will be required. For more information about any of the MS4 requirements, feel free to contact the Engineering Department.

FINANCE

Q: Where do I find the Township's current budget?

A: Visit www.abingtonpa.gov/budget to view the current budget.

Q: When does the budget process begin?

A: The Township's fiscal year is January 1 to December 31. The budget is evaluated year round by the Township Manager with strategic planning of the Board of Commissioners being conducted in early spring and used as a basis and driver for appropriation decision making, and as a guide for the Administration, and subsequently all departments. The formal adoption of the Fiscal Year Proposed Budget is typically scheduled for a public meeting in November, with final and official adoption no later than December 31 of each calendar year.

Q: What type of financial reporting does the Township undertake?

A: The Township prepares the Annual Comprehensive Finance Report which includes the financial statements and supplementary information under Government Accounting Standards Board (GASB) requirements for municipal governments.

Q: Who do I contact regarding delinquent user fees?

A: In January, the Township's Finance Department notifies property owners of delinquencies on User Fees. At the start of each new year, the Tax Collector forwards the list of unpaid sewer rent and refuse fees (user fees), from the prior year, to the Finance Department for collection. This amount is in addition to any notices received from Montgomery County Tax Claim Bureau. The letters direct delinquent property owners to call and arrange a payment plan. If these requests are ignored, the account will be turned over to an attorney (Portnoff Law Associates) for collection. This action is only taken on property owners not complying with a payment plan and could add significant costs to the bill. If you have received a notice of delinquency from the Finance Department on sewer rents and refuse fees, please call the Finance Department a 267-536-1049 for payment.

FIRE SERVICES

Q: How many smoke alarms should I have in my home and where should they be located?

A: We recommend a minimum of at least one smoke alarm on every level of your home, including one in every bedroom, one in the hallway in front of each bedroom and at the top of any stairway.

Q: How many Carbon Monoxide alarms should I have in my home and where should they be located?

A: We recommend a minimum of at least one carbon monoxide within 40 feet of the sleeping areas of your home.

LIBRARY

Q: How do I apply for a library card? Do I have to pay for it?

A: If you live, work, or attend school in Abington Township or Rockledge Borough, you may get a Library card for free at Abington Free Library, the Roslyn Library, or online. For more information, please visit abingtonfreelibrary.org/get-library-card.

Q: Do you collect overdue fines?

A: As of January 1, 2024, the Abington Township Public Library is no longer collecting fines for overdue materials. As long as you bring our items back, you won't owe us any money. Visit abingtonfreelibrary.org/fine-free for more details.

Q: What programs are available at the library?

A: Abington and Roslyn Libraries offer events for all ages and interests. Programs are offered in-person, on zoom, outside, or out in the community. For more information, please visit abingtonfreelibrary.org/events.

Q: What can I borrow from the library?

A: The Abington Township Public Library has a collection of 130,000 items, including books, graphic novels, DVDs, CDs, magazines, playaways, audiobooks, and more than 50 digital media and streaming services. Some of our most popular include access to the Philadelphia Inquirer and the New York Times, Libby by OverDrive, for ebooks and audiobooks; Kanopy, for on-demand streaming content; and hoopla, with digital media like ebooks, audiobooks, movies, TV shows, and music available instantly. Find a recipe on NYT Cooking, learn a new language with Mango Languages, brush up on a new hobby with Universal Class, repair your car or small engine with Auto Repair Source, or research a big household purchase with Consumer Reports. For all of these and so much more, go to abingtonfreelibrary.org/eresources. You can also borrow non-traditional lending items from our Library of Things!

Q: What's a Library of Things?

A: The Library of Things is a collection of non-traditional items, all available for you to borrow for free. The Library of Things includes museum passes to two dozen local museums and cultural institutions, hot spots and connected Chromebooks, graphing calculators, birding backpacks, blood pressure monitors, puzzles, science kits, and so much more! Check it out at abingtonfreelibrary.org/library-things.

OFFICE OF THE TOWNSHIP MANAGER

Q: How do I find Township meetings?

A: Residents can view the meeting schedule on our website at www.abingtonpa.gov/calendar.

Q: Where are meetings held?

A: Meeting formats vary due. Please visit our Township calendar (www.abingtonpa.gov/calendar) or the meeting agenda (www.abingtonpa.gov/agendas) to confirm the meeting location.

Q: How do I access Township meeting agendas and minutes?

A: To view meeting agendas and minutes, please visit www.abingtonpa.gov/agendas. Both upcoming meeting agendas and past meeting minutes and agendas may be viewed. Residents can also sign up for agendas they're interested in receiving. Submit your email in the "email updates" box located on the agendas webpage.

Q: Does the Township have a YouTube channel?

A: The Township no longer posts videos on Youtube. All Township videos are now posted on Viebit. Please visit www.abingtonpa.viebit.com to access Township videos at any time.

Q: How do I submit a right to know request?

A: Information on how to submit a right to know request

may be found at

<https://www.abingtonpa.gov/departments/office-of-the-township-manager/open-records>.

Q: Does the Township have a local government access channel?

A: Yes. Abington Township offers a government access channel for residents who would like to view Township news, event information and recorded meetings. Information runs 24 hours a day. When a meeting is not playing, information slides will be displayed. Comcast and Verizon each sponsor a government access channel.

- Comcast Cable: Channel 43
- Verizon Fios: Channel 24

Q: Where do I sign up to receive information about Township meetings and news?

A: The Township sends an electric newsletter at the beginning of each month. To sign up for the newsletter, please visit www.abingtonpa.gov/newslettersignup.

Q: How do I notify staff of an issue or submit a request for service?

A: You can report a non-emergency problem or submit a service request online at www.abingtonpa.gov/servicerequest or by calling a department. For emergencies, call 911.

PARKS & RECREATION

Q: What programs does the Township offer?

A: The Township offers a wide variety of programs for children and adults. We publish an activities guide twice a year: Fall/Winter and Spring/Summer. Residents can view our activity guides and registration forms online at www.abingtonpa.gov/prguide.

Q: Where can I find information about Township parks?

A: To find a map, a list of parks and their amenities, visit <https://www.abingtonpa.gov/departments/parks-recreation/parks-facilities/parks-and-facilities>.

Q: Does the Township have any pool facilities?

A: Yes, the Township has two pool facilities: Penbryn Park and Crestmont Park. We also have a wading pool for children at Alverthorpe Park. For membership types, registration, and pool rules, please visit www.abingtonpa.gov/pools.

Q: I'm having a gathering. Does the Township offer any rental facilities?

A: Yes, facility rentals are available at the Ardsley Community Center, Crestmont Clubhouse, and Alverthorpe Park. Please see page 18 of this guide for more information or visit https://apm.activecommunities.com/abingtonparksandrec/Facility_Search to view our current availabilities.

POLICE

Q: There's a dead animal in the middle of my road. Who do I contact?

A: Residents may call or email our Animal Control Officer, Ron Griffith, at 267-536-1100 ext. 1590 or rgriffith@abingtonpa.gov. You may also dial 911 to request Animal Control services. The Animal Control Officer is trained to deal with a wide range of animal-related problems such as road kill, wild animals, stray dogs, or barking dogs.

Q: I received a parking ticket. Can I pay it online?

A: Yes, you may pay your ticket online at <https://www.abingtonpd.org/resources/parking-tickets/>.

Q: I'd like to have a block party. Where do I get a permit?

A: Township residents may apply for permits to hold block parties by contacting the Community Policing Division at 267-536-1080. For approved permits, the Township will supply barricades to shut down motor vehicle traffic. For more information or to view the permit, please visit <https://www.abingtonpd.org/resources/faq/> and select "Block Party Permits".

Q: How do I make a police report?

A: There are several ways that you can make an official police report:

- In an emergency or hazardous situation, call 9-1-1. A police officer will be dispatched to the location you specify.
- For non-emergencies, call 215-884-2700. A police officer will be dispatched to the location you specify.
- You may make a report in person by coming into the Police Station. We are located at 1166 Old York Road.
- You may contact us via our web site at <https://www.abingtonpd.org/contact-us/general-questions/>. An APD representative will contact you to arrange for a report to be taken.

PUBLIC WORKS

Q: My trash/recycling collection day occurs on a holiday. Will it still be picked up?

A: When the Township is closed, there is no trash, recyclable or yard waste collection. Trash and recyclables collections will occur on the next business day. Yard debris will be collected on your next regularly scheduled collection date.

Q: My trash wasn't picked-up, but my neighbors were, who should I contact?

A: Please call the refuse division at 267-536-1038, email trashcollection@abingtonpa.gov, or submit a service request at www.abingtonpa.gov/servicerequest.

Q: My recycling/trash can is damaged. How can I get a replacement?

A: To notify the Public Works Department of a damaged cart, please call 267-536-1038 between 8 AM and 4 PM, Monday through Friday, or submit a service request online at www.abingtonpa.gov/servicerequest.

Q: What materials should be considered trash?

A: Normal household refuse such as food waste. NEVER put any of the following materials in the trash: liquids of any type, medical waste supplies, building and construction debris, hazardous wastes, large tree limbs, appliances, furniture, etc.

Q: I have large items I would like taken. Who do I contact?

A: For more information, please visit our large item pick-up web-page at www.abingtonpa.gov/largeitempickup.

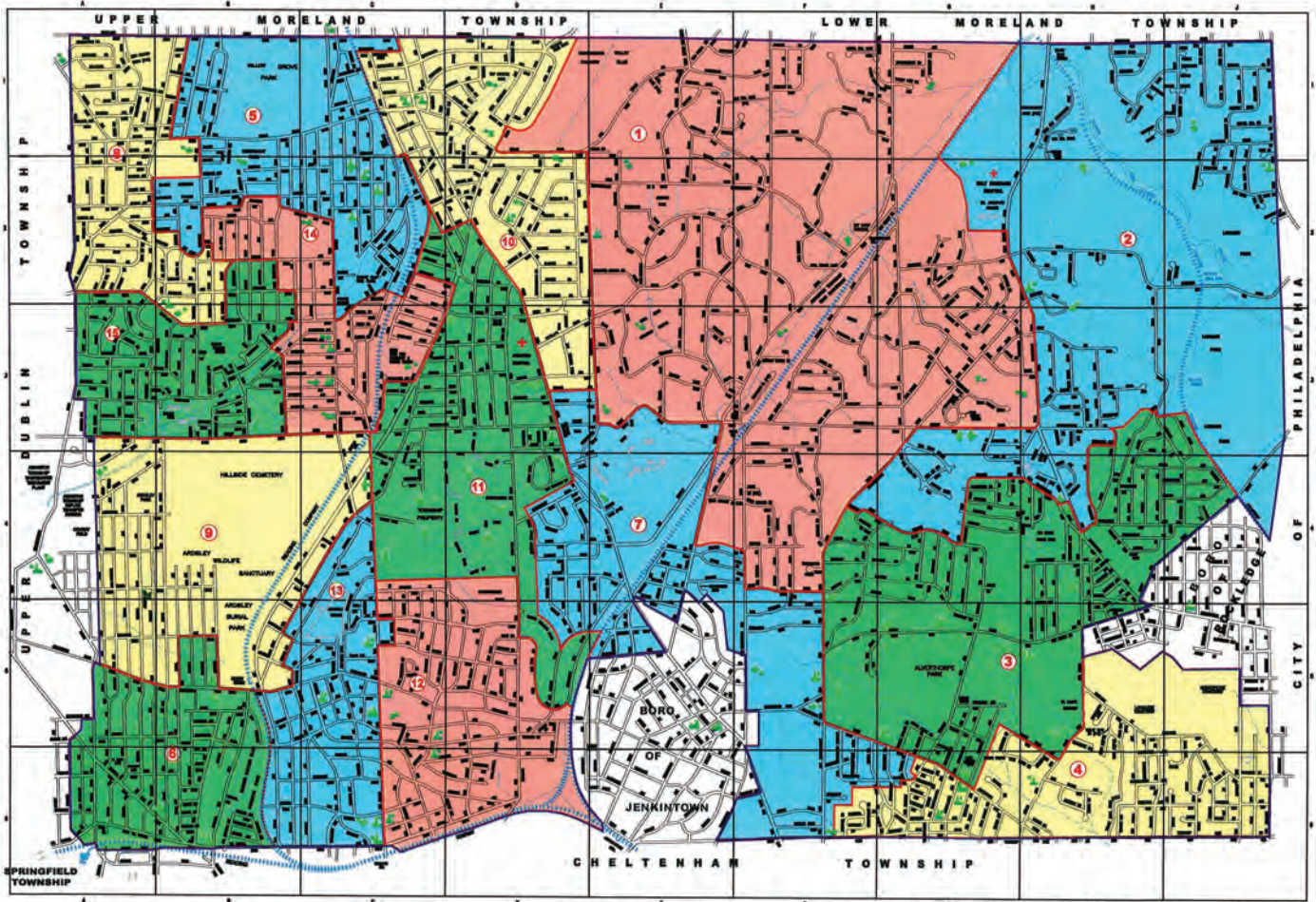
Q: What is yard waste?

A: Yard waste includes leaves, brush, grass clippings, twigs, and small branches only. Do not include stones, rocks, or dirt with the yard waste recycling.

Q: How do you dispose of tree limbs and branches?

A: Brush and tree limbs for disposal must be cut into maximum 3 feet lengths and 3 inches in diameter. It must be bundled, tied and placed curbside on your normal trash day. Brush or tree limbs are not accepted at the highway yard.

WARD MAP



Find your ward and other helpful information by using our online resident lookup map at www.abingtonpa.gov/residentlookup.



**SUBMIT NON-EMERGENCY REQUESTS
OR ISSUES THROUGH OUR ONLINE**

CITIZEN SERVICE REQUEST TOOL

Examples include:

- ✓ Trash not picked up
- ✓ Faded sign
- ✓ Traffic safety concern
- ✓ Playground equipment issue

**TO SUBMIT A REQUEST OR ISSUE, VISIT
WWW.ABINGTONPA.GOV/SERVICEREQUEST**





**For an extended edition of the
New Resident Guide, please visit
www.abingtonpa.gov/newresidentguide.**

**The online guide includes additional
information and will be regularly updated.**



Important Abington Township Tax Information

Tax Office: 267-536-1024

Hours: Monday – Thursday 8 am to 5 pm

Friday 8am -4 pm

Taxes for Abington Township Include:

- The Real Estate Tax
- The Real Estate Transfer Tax (collected by Montgomery County)
- The Local Services Tax
- The Mercantile & Business Privilege Tax (Gross Receipts)
- The Earned Income Tax (collected by Berkheimer Tax Administrator)

Township Taxes for 2024

Real Estate Tax	see below
Real Estate Transfer Tax	1%
Local Services Tax	\$52.00 Annually
Mercantile / Business Privilege Tax	.0015% Retail - .001% Wholesale .004% Service/Rental/Interest & Dividends
Earned Income Tax	1% (.5% to Township / .5% School District)

Real Estate Taxes 2024

Abington Township	5.922 mills
Abington School District (Updated 7/2024)	35.21 mills
Montgomery County / MCCC	5.1780 mills

Example of a House Assessed at 150,000

Township Tax	5.922 mills x 150,000	=	\$ 888.00
School District Tax	35.21 mills x 150,000	=	\$ 5,281.00
County Tax	4.788 mills x 150,000	=	\$ 718.00
MCCC (County)	0.390 mills x 150,000	=	\$ 59.00
Total			<u>\$ 6,946.00</u>

Breakdown of Township Taxes

Township	5.002 mills
Fire Tax (to support Abington Volunteer Co's)	<u>.92 mills</u>
Total	5.922 mills

TAX PAYMENTS FROM DECEMBER 15th TO DECEMBER 31st

ONLY BANK CHECKS WILL BE ACCEPTED - NO PERSONAL OR BUSINESS CHECKS - NO CASH

Important Tax Facts That You Should Know

- Tax bills are mailed to the homeowner. It is the responsibility of the homeowner to forward the tax bill to their mortgage company if required. The Tax Office should be updated immediately with any mailing address change.
- The Township/County bill is mailed the first week in February each year. The tax is for the period of January 1 to December 31. This bill includes the following:
 - * Township real estate tax includes the fire tax, sewer usage and refuse fee. The sewer fee is based on the meter size and volume of water that is used each year. The refuse fee is based on the size and number of trash containers you use.
 - * Montgomery County and MCCC real estate taxes.

- The Abington School District tax bill is mailed the first week in July each year. The tax is for the period of July 1 to June 30.

Property Tax Relief - Abington Township residents receive a homestead tax reduction on their primary residence. All applications for the homestead exclusion must be received by the Board of Assessments on or before March 1 to be eligible for the reduction on the school real estate tax bill.

You are not required to file each year once you have been approved for the homestead exclusion. You would need to re-apply if you move or the title of the property changes name. Forms can be obtained on the Montgomery County website (montcopa.org) or contact the Tax Office at 267-536-1024.

- **Assessment**

Abington Township does not assess your property. This is done by the Montgomery County Board of Assessments. The last time a county-wide reassessment was done was 1998. A property's assessment can change up or down for various reasons. Increases to a property assessment might include: in-ground swimming pool, addition, central air-conditioning, decks, etc. Decreases to a property assessment might include: removal of in-ground pool, demolition of deck or garage, etc.

Interim tax bills will be prepared and mailed to the homeowner based on all increases or decreases to the assessed value of your home.

- **Local Services Tax**

The Local Services Tax is a \$52.00 annual tax for anyone employed or self-employed in Abington Township who earns over \$12,000 or more. Payment of this tax is due quarterly.

As of January 1st, 2024, Berkheimer has been appointed Local Services Tax Collector. To register, ask questions or obtain forms, contact:

Berkheimer
PO Box 25156
Lehigh Valley, PA 18002-5156
800-360-8989 ext. 3 - then option #2
Email: eLST@goberk.com
Website: www.hab-inc.com

- **Mercantile/Business Privilege Tax**

All businesses are required to submit a Business License Application prior to operating a business in the township. An estimate tax must be paid within 40 days after opening date.

The Mercantile/Business Privilege Tax return is to be filed by April 15th of each year. This tax is based on the gross revenue as reported to the Federal Government on the applicable federal schedule(s) shown on the federal income tax return of all business income. Business income consists of all services, retail and wholesale sales, and rentals. Corporations and partnerships are required to report interest/dividends/capital gains. Businesses (including rental) are entitled to an annual exclusion of \$2,500 to be deducted from their gross receipts.

- **Earned Income Tax**

The Earned Income Tax is withheld by all employers in the township at the rate of 1% and is collected by H.A.Berkheimer Associates (610-599-3139) (hab-inc.com). If you are self-employed you must submit quarterly estimates to Berkheimer. This tax is split 50/50 between the township and the school district.

- **E-Mail**

The tax office has an e-mail notification service to advise residents of the mailing of the real estate/school tax bills, reminders of tax due dates and other township information. If you have not signed up for this notification and would like to receive it, please e-mail Dwallace@abingtonpa.gov Please contact us if you have any

questions.

Jay W. Blumenthal, Treasurer/Tax Collector	-	267-536-1024
Carol Thrasher, Deputy Tax Collector - Business	-	267-536-1025
Maggie Tyler, Deputy Tax Collector - Real Estate	-	267-536-1026
Joan Lee, Business	-	267-536-1027
Donna Wallace, R/E Taxes	-	267-536-1028
Jeanne Jasionowski, LST	-	267-536-1023

2024 REAL ESTATE/SCHOOL TAX DUE DATES

County/Township- Sewer-Refuse

Discount Due Date – Monday, April 8, 2024

Face Due Date – Friday, June 7, 2024

10% Penalty After – June 7, 2024

School Tax

Discount Due Date – Wednesday, September 4, 2024

Face Due Date – Monday, November 4, 2024

10% Penalty After – November 4, 2024

1st Installment due Thursday, August 15, 2024

2nd Installment due Monday, September 16, 2024

3rd Installment due Friday, November 15, 2024 - before 10% Penalty

**AFTER DECEMBER 15 through DECEMBER 31,
PERSONAL CHECKS WILL NOT BE ACCEPTED FOR PAYMENT OF REAL
ESTATE AND SCHOOL TAXES – PERSONAL CHECKS WILL BE RETURNED
BANK CHECKS OR MONEY ORDERS ONLY – NO CASH**

2023 MERCANTILE/BUSINESS PRIVILEGE TAX RETURN

The completed form is due by April 15, 2024 with payment and a copy of your Federal Tax Return. If you are filing an extension with the IRS it is necessary to also file an extension with the Tax Office and submit an estimate tax payment (this form is available on our webpage). All extension requests must be submitted by April 15, 2024.



Pennsylvania Voter Registration Application

Register to vote

With this form, you can register to vote in elections in Pennsylvania.

You can also use this form to:

- **Change the information on your Pennsylvania voter registration.**
- **Register with a political party or change the party you have selected.**

If you are currently registered to vote in Pennsylvania, you do not have to use this form unless you have moved or changed your name.

To register you must:

- Be a United States citizen for at least 30 days before the next election.
- Be a resident of Pennsylvania and your election district for at least 30 days before the next election.
- Be at least 18 years of age on the day of the next election.

Register online

You can also register to vote on the web.

Go to register.votesPA.com.

Send or deliver this form

To be registered in the next election, mail or deliver your application form to your county voter registration office at least 15 days before the next election.

Addresses for all Pennsylvania counties are listed on page 2.

If your registration is accepted, you will receive a Voter Registration Card from your county by nonforwardable mail.

Your registration is not complete until processed and accepted by your county voter registration office.

If you do not receive your Voter Registration Card within 7-10 days, contact your county voter registration office.

Verifying your identity

When you vote for the first time in your election district, you must show a form of identification.

For a complete list of acceptable forms of photo and non-photo identification, visit www.votesPA.com/ID or call your County Board of Elections or **1-877-VOTESPA (1-877-868-3772)**.

In the military?

If you are on active duty or you are a hospitalized or bedridden veteran, you can register at any time. See www.fvap.gov for more information.

College student in Pennsylvania?

If you are a college student who attends college in Pennsylvania, you can register where you live while attending school.

For more information, see www.votesPA.com.

You may only register and vote in one place.

In prison or convicted of a felony?

If you meet all other requirements, you may register and vote if:

- You are in prison awaiting trial but have not been convicted.
- You are in prison after being convicted of a misdemeanor only.
- You have been released from prison or a halfway house after completing your term of incarceration.
- You are on probation or released on parole.
- You are under house arrest.

You should register at the address where you live, except that you cannot use a prison or half-way house address for your registration. See www.votesPA.com for more information.

Questions?

Call your County Voter Registration Office or call 1-877-VOTESPA (1-877-868-3772).

For more information about voting, visit our website: www.votesPA.com.

Información en español:

Si le interesa obtener este formulario en español, llame al **1-877-868-3772**.

PENALTY FOR FALSIFYING DECLARATION

Warning: If a person signs an official registration application knowing a statement declared in the application to be false, makes a false registration, or furnishes false information, the person commits perjury.

Perjury is punishable, upon conviction, by a term of imprisonment not exceeding seven years, or a fine not exceeding \$15,000, or both, at the discretion of the court.

Submitting an application containing false information may also subject a person to other penalties, including loss of the right of suffrage, under state or federal law.

Confidentiality

If you decline to register to vote, the fact that you declined will remain confidential, and will be used for voter registration purposes only.

If you register to vote, the office at which you register will remain confidential and will be used for voter registration purposes only.

Pennsylvania County Voter Registration Office addresses

Adams

117 Baltimore St
Rm 106
Gettysburg PA 17325
(717) 337-9832

Allegheny

542 Forbes Ave
Ste 609
Pittsburgh PA 15219-2913
(412) 350-4500

Armstrong

Administration Bldg
450 E Market St
Ste 207
Kittanning PA 16201
(724) 548-3222

Beaver

810 Third St
Beaver PA 15009
(724) 770-4440

Bedford

200 S Juliana St
3rd Fl
Ste 301
Bedford PA 15522
(814) 623-4807

Berks

633 Court St
1st Fl
Reading PA 19601
(610) 478-6490

Blair

279A Loop Road
Hollidaysburg PA 16648
(814) 693-3287

Bradford

6 Court St
Ste 2
Towanda PA 18848
(570) 265-1717

Bucks

55 E Court St
Doylestown PA 18901-4318
(215) 348-6163

Butler

PO Box 1208
Butler PA 16003
(724) 284-5308

Cambria

200 S Center St
Ebensburg PA 15931
(814) 472-1464

Cameron

20 E Fifth St
Emporium PA 15834-1469
(814) 486-9321

Carbon

410 Center Ave
Jim Thorpe PA 18229-0170
(570) 325-4801

Centre

420 Holmes St
Willowbank Office Bldg
Bellefonte PA 16823-1486
(814) 355-6703

Chester

601 Westtown Rd
Ste 150
PO Box 2747
West Chester PA 19380-0990
(610) 344-6410

Clarion

Administrative Building
330 Main St
Rm 104
Clarion PA 16214
(814) 226-4000 Ext 2006

Clearfield

212 E Locust St
Ste 106
Clearfield PA 16830
(814) 765-2642 ext 5053

Clinton

2 Piper Way
Ste 309
Lock Haven PA 17745
(570) 893-4019

Columbia

PO Box 380
Bloomsburg PA 17815-0380
(570) 389-5640

Crawford

903 Diamond Park
Meadville PA 16335
(814) 333-7307

Cumberland

1601 Ritner Highway
Ste 201
Carlisle PA 17013
(717) 240-6385

Dauphin

PO Box 1295
Harrisburg PA 17108-1295
(717) 780-6360

Delaware

Govt Center Bldg
201 W Front St
Media PA 19063-2728
(610) 891-4659

Elk

300 Center St
PO Box 448
Ridgway PA 15853-0448
(814) 776-5337

Erie

140 W 6th St
Rm 112
Erie PA 16501
(814) 451-6276

Fayette

22 E Main St
Public Service Bldg
Uniontown PA 15401
(724) 430-1289

Forest

526 Elm St
Box 3
Tionesta PA 16353
(814) 755-3537

Franklin

157 Lincoln Way East
Chambersburg PA 17201-2211
(717) 261-3886

Fulton

116 W Market St
Ste 205
McConnellsburg PA 17233
(717) 485-6872

Greene

93 E High St
Rm 102
Waynesburg PA 15370
(724) 852-5230

Huntingdon

Bailey Building
233 Penn St
Huntingdon PA 16652-1486
(814) 643-3091 Ext 205

Indiana

825 Philadelphia St
Indiana PA 15701-3934
(724) 465-3852

Jefferson

155 Main St
Jefferson Place
Brookville PA 15825-1269
(814) 849-1693

Juniata

1 N Main St
PO Box 68
Mifflintown PA 17059
(717) 436-7706

Lackawanna

123 Wyoming Ave
2nd Floor
Scranton PA 18503
(570) 963-6737

Lancaster

PO Box 2139
Lancaster PA 17608
(717) 299-8293

Lawrence

430 Court St
New Castle PA 16101
(724) 656-2161

Lebanon

400 S 8th St
Municipal Bldg
Rm 209
Lebanon PA 17042
(717) 228-4428

Lehigh

17 S 7th St
Allentown PA 18101-2401
(610) 782-3194

Luzerne

20 N Pennsylvania Ave
Ste 207
Wilkes-Barre PA 18701
(570) 825-1715

Lycoming

48 W Third St
Williamsport PA 17701-9536
(570) 327-2267

McKean

500 W Main St
Smethport PA 16749
(814) 887-3203

Mercer

5 Courthouse
Mercer PA 16137-1227
(724) 662-7542

Mifflin

20 N Wayne St
Lewistown PA 17044
(717) 248-6571

Monroe

One Quaker Plaza
Rm 105
Stroudsburg PA 18360
(570) 517-3165

Montgomery

Voter Services
PO Box 311
Norristown PA 19404-0311
(610) 278-3280

Montour

253 Mill St
Danville PA 17821
(570) 271-3002

Northampton

Elections Division
669 Washington St
Easton PA 18042
(610) 829-6260

Northumberland

320 N 2nd St
Ste 1
Sunbury PA 17801
(570) 988-4208

Perry

PO Box 37
New Bloomfield PA 17068
(717) 582-2131 ext 4110

Philadelphia

520 N Columbus Blvd
Philadelphia PA
19123-4295
(215) 686-1590

Pike

506 Broad St
Milford PA 18337
(570) 296-3427

Potter

1 N Main St
Ste 204
Coudersport PA 16915
(814) 274-8467

Schuylkill

420 N Centre St
Pottsville PA 17901
(570) 628-1467

Snyder

PO Box 217
Middleburg PA 17842-0217
(570) 837-4207

Somerset

300 N Center Ave
Ste 340
Somerset PA 15501
(814) 445-1549

Sullivan

245 Muncy St
PO Box 157
Laporte PA 18626
(570) 946-5201 ext 7

Susquehanna

PO Box 218
31 Lake Ave
Montrose PA 18801
(570) 278-6697

Tioga

118 Main St
Wellsboro PA 16901
(570) 723-8230

Union

155 N 15th St
Lewisburg PA 17837-8822
(570) 524-8681

Venango

1174 Elk St
PO Box 831
Franklin PA 16323-0831
(814) 432-9514

Warren

204 4th Ave
Warren PA 16365
(814) 728-3406

Washington

100 W Beau St
Rm 206
Washington PA 15301
(724) 228-6750

Wayne

925 Court St
Honesdale PA 18431
(570) 253-5978

Westmoreland

2 N Main St
Ste 109
Greensburg PA 15601
(724) 830-3150

Wyoming

1 Courthouse Sq
Tunkhannock PA 18657
(570) 996-2226

York

28 E Market St
York PA 17401-1579
(717) 771-9604

For a listing of available
email addresses, go to
www.votesPA.com/county.

Pennsylvania Voter Registration Application

<p>Print your name</p>		<p>Last name _____ First name _____</p>	<p><input type="checkbox"/> Jr <input type="checkbox"/> Sr <input type="checkbox"/> II <input type="checkbox"/> III <input type="checkbox"/> IV Middle name or initial _____</p>
<p>Eligibility If you answer "No" to either question, you cannot register to vote.</p>	2	<p>Are you a citizen of the U.S.? <input type="checkbox"/> Yes <input type="checkbox"/> No Will you be 18 years or older on or before election day? <input type="checkbox"/> Yes <input type="checkbox"/> No</p>	<div style="border: 1px solid black; width: 100%; height: 40px;"></div>
<p>Reason</p>	3	<p><input type="checkbox"/> New registration <input type="checkbox"/> Change of name <input type="checkbox"/> Change of address <input type="checkbox"/> Change of party <input type="checkbox"/> Federal or State employee registering in county of last residence</p>	
<p>About you Phone and email are optional and used if information is missing on this form.</p>	4	<p>Birth date _____ Phone _____</p>	<p>Sex <input type="checkbox"/> M <input type="checkbox"/> F Race (optional) _____ Email _____</p>
<p>Your address If you do not have a street address or a permanent residence, or are a student, see the instructions.</p>	5	<p>Address (not P.O. Box) _____ Apt. number _____ City/Town _____ State PA Zip Code _____ Municipality _____ County _____ <input type="checkbox"/> I do not have a street address or permanent residence (use map on back)</p>	
<p>The address where you receive mail</p>	6	<p><input type="checkbox"/> Same as above Address or P.O. Box _____ City/Town _____ State Zip Code _____</p>	
<p>Identification If you have a Penn DOT number, you must use it. If not, please provide the last four digits of your Social Security number. See Verifying your identity.</p>	7	<p>PA driver's license or PennDOT ID card number _____ Last four digits of your Social Security number X X X - X X - _____ <input type="checkbox"/> I do not have a PA driver's license or a PennDOT ID card or a Social Security number.</p>	
<p>Political party To vote in a primary, you must register with either the Democratic or Republican party.</p>	8	<p><input type="checkbox"/> Democratic <input type="checkbox"/> Republican <input type="checkbox"/> Green <input type="checkbox"/> Libertarian <input type="checkbox"/> None (No Affiliation) <input type="checkbox"/> Other _____</p>	
<p>Voting assistance</p>	9	<p><input type="checkbox"/> I require help to vote. I need this kind of assistance: _____ <input type="checkbox"/> I require language help. My preferred language is: _____</p>	
<p>If your name or address has changed Skip if this is the first time you are registering to vote.</p>	10	<p>Name on previous registration _____ Full previous address and county _____ PA Voter No. (if available) _____ Year _____ Transfer Permanent Ballot Request <input type="checkbox"/> By checking the box, you are requesting that you continue to maintain your annual ballot request status when updating your address.</p>	
<p>Declaration</p>	11	<p>I declare that:</p> <ul style="list-style-type: none"> I am a United States citizen and will have been a citizen for at least 30 days on the day of the next election. I will be at least 18 years old on the day of the next election. I will have lived at the same address in Section 5 for at least 30 days before the election. I am legally qualified to vote. <p>I affirm that this information is true. I understand that this declaration is the same as an affidavit, and, if this information is not true, I can be convicted of perjury, and fined up to \$15,000, jailed for up to seven years, or both.</p>	<p>Signature or mark</p> <div style="border: 1px solid black; width: 100%; height: 60px;"></div> <p>Print name _____ Today's date _____</p>
<p>Help with this form Fill in if someone helped you with this form or witnessed you make a mark for your signature.</p>	12	<p>Name of assistant _____ Address _____ Phone _____ Signature of assistant _____</p>	

Be a poll worker

If you check either of these boxes, your county voter registration office will contact you.

13

I would like to be a poll worker on Election Day.

I would like to be a bilingual interpreter on Election Day. I speak this language: _____

Instructions for Section 5:

How to show your address on a map

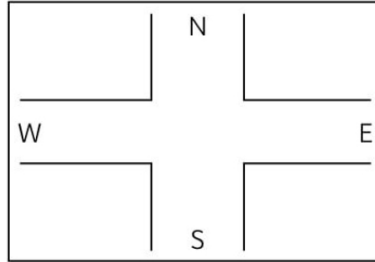
If you live in a rural area and do not have a street address, use the map to the right to show where you live, with landmarks and road names.

If you are homeless, use the map to the right to show where you spend most of your time.

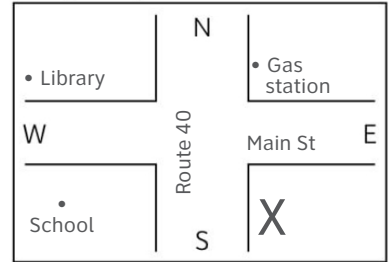
How to fill in the map:

- Write the names of the roads or streets nearest to where you live.
- Draw an X to show where you live.
- Use a dot to show the location of landmarks, such as schools, churches, or stores, and identify them by name.

Draw your map here.



Example map. Do not use this map.



Fold here



Your address



Place
First-class
stamp
here

Your County Voter Registration Office address:

Fold here



Fold, tape shut, and mail to your County Voter Registration Office.

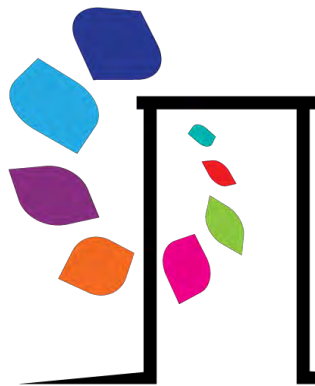
Do not use staples.

County Voter Registration Office addresses are listed on page 2.

Tape here

Tape here

Tape here



Montgomery County
Department of
Health and Human Services

Office of Public Health

Parent and Infant Resource Guide

A reference guide of services to help families
and agencies in Montgomery County

Montgomery County Office Community Connections

Community Connection Navigates are skilled human service professionals who are knowledgeable about local, county, and state resources. They can provide quick information for simple questions. They can also work with residents on complex issues. Residents can work with the same Navicate during their interaction with Community Connections allowing the Navicate to serve as both a navigator of the system and as an advocate for the individual throughout the process. This service is FREE of charge to ANY MONTGOMERY COUNTY RESIDENT.

Language line services are readily available.
Servicios de línea de idiomas están disponibles.

www.montcopa.org/ContactANavigate

610-278-3522

EMERGENCY SERVICES

General Emergency (Ambulance, Fire, Police) **911**
Poison Control Center **800-222-1222**
Montgomery County Mobile Crisis Support
855-634-4673
Child Abuse 24-hour Hotline **800-932-0313**

Need Resources? ... Don't know who to call?

Dial 2-1-1



Abuse

Child

Child Abuse 24-hour Helpline (Childline) 800-932-0313
Montgomery County Children & Youth 610-278-5800
After 4:15 PM and Weekends 610-275-1222
Children's Crisis Treatment Center 215-496-0707
Trauma Assistance Program 215-496-0707
Sexual Trauma Treatment Program 215-496-0707
Mission Kids – Child Advocacy Center 484-687-2990
Montgomery County Child Advocacy Project 610-279-1219

Domestic Violence

Bilingual Hotline (English & Spanish) 866-723-3014
Domestic Abuse Response Team (DART) 24/7 215-852-9826
Laurel House 24-hour Helpline 800-642-3150
MENERGY – Counseling for Perpetrators 215-242-2235
Montgomery Co. Aging/Adult Elder Abuse 800-734-2020
National Teen Dating Abuse Hotline 866-331-9474
PA Coalition against Violence (se habla español) 800-799-SAFE
TTY: 800-787-3224
Police Notification Program (SAVIN)
for victims 800-322-4472
for non-victims 866-727-2846
S.A.F.E. Project of Creative Health 610-326-9250
(prevention & intervention for children)
The Open Link (not 24 Hours) 215-679-4112
Victim Services Center of Montgomery County 610-277-0932
24-hour Crisis Helpline 888-521-0983
Women Organized Against Rape (WOAR) Hotline 215-985-3333
Women's Center of Montgomery Co 24/7 Hotline 800-773-2424
Bryn Mawr Office 610-525-1427
Colmar Office 215-996-0721
Elkins Park Office 215-635-7344
Holy Redeemer Hospital 215-938-3711
Lansdale Hospital/Abington Health 215-853-8060
Norristown Office 610-279-1548
Pottstown Office 610-970-7363

Adoption and Foster Care

Adoptions from the Heart 800-355-5500
Bethany Christian Services 215-376-6200
Catholic Social Services 610-279-7372
Carson Valley Children's Aid 215-233-1960
Concern Willow Grove 800-562-1427
Delta Community Supports 215-887-6300
Haven Adoptions 800-716-8220
Montgomery County Office of Children & Youth 610-278-5800
National Adoption Center 215-735-9988
Open Arms Adoption Network 267-256-2229
PA Statewide Adoption Network 800-585-SWAN
PA State Foster Care Resource Family Association 800-851-5151

Advocacy/Legal Services

AIDS Law Project of PA 215-587-9377
Attorney General Consumer Protection Bureau 800-441-2555
Better Business Bureau 202-393-8000
CLARIFI Consumer Credit Counseling 215-563-5665
Disability Rights PA Toll Free 800-692-7443
TDD 877-375-7139
Philadelphia 215-238-8070
Education Law Center 215-238-6970
Housing Discrimination Advocacy
Housing Equality Center 866-540-3247
HUD 888-799-2085
HUD TDD 800-877-8339
Laurel House 24-hour Helpline 800-642-3150
Legal Aid of SEPA Helpline 877-429-5994
Legal Aid of Southeastern PA
Norristown 610-275-5400
Pottstown 610-326-8280
Legal Clinic for the Disabled (free for low-income) 215-587-3350
Montgomery County Bar Association
Lawyer Referral Service – option 3: 610-279-9660
Montgomery County Child Advocacy Project 610-279-1219
Montgomery County Domestic Relations 610-278-3646
Montgomery County Juvenile Probation 610-630-2252
Office of Vocational Rehab Client Assist. Program 888-745-2357
Pennsylvania Health Law Project 800-274-3258
Pennsylvania Human Relations Commission 215-560-2496
TTY 215-560-3599
Pennsylvania Legal Aid 800-322-7572
Pennsylvania Utility Law Project 844-645-2500
utilityhotline@palegalaid.net
Senior LAW Center 877-727-7529
Victim Services Center Helpline 888-521-0983
Women's Center of Montgomery County 800-773-2424

Basic Needs

Cribs for Kids: 484-622-ENFP (3637)
(Agency referral required)

SAFE TO SLEEP

Help reduce the risk of SIDS (Sudden Infant Death Syndrome):

- Place baby on his/her back in an empty crib with a firm mattress and fitted sheets
- Do not over bundle clothing
- Keep your home smoke-free
- Practice room-sharing without bed-sharing

Pregnancy/Baby

A Baby's Breath Collegetown 610-489-0083
24-Hour Call Line: English 484-571-5540
Spanish 267-275-4966
Birthright of Pottstown 610-327-2626
Cradle of Hope 215-572-5937
Genesis Pregnancy Care Center Pottstown 610-970-8089
Norristown Catholic Social Services
Diaper Bank (every 3rd Tuesday & Thursday) 610-279-7372
Philly Baby Bump – Local Resource www.Phillybabybump.com
Pregnancy Resource Clinic (Hotline: 24 hours/day) 215-855-2424

Clothing

Goodwill Store East Norriton 484-680-7631
Montgomeryville 267-645-4180

Liberty Thrift Stores	Collegeville	610-831-9856
	Pottstown	610-970-6306
	Montgomeryville	215-699-1203
Little Liberty (children & maternity)		610-831-2170
St. Peter's Lutheran Church	Pottstown	215-699-4604

Montgomery County Office of Public Health	Norristown	610-278-5117
	Pottstown	610-970-5040
	Willow Grove	215-784-5415

Financial

American Red Cross (Emergency Assistance)		215-299-4000
Dept. Human Services Benefits Hotline		800-692-7462
Internal Revenue Service (IRS)		800-829-1040
Low Income Energy Assistance (LIHEAP) Toll-free		
	Norristown	877-398-5571
	Pottstown	800-641-3940
PECO MEAF (Matching Energy Assistance Fund)		610-277-6363
Project Outreach		610-948-5111
(Housing and rent assistance in Royersford area)		
Social Security (SSDI/SSI disabilities)		
	Norristown	800-772-1213
	Limerick	866-964-7415

Food

Find food near you:

<https://www.philabundance.org/find-food/food-map/>

Advocates against Hunger		610-630-9637
Catholic Social Services	Norristown	610-279-7372
Coventry Food Pantry	Pottstown	610-326-5659
Inter-faith Food Cupboard	Abington	267-318-0607
Keystone Opportunity Center	Souderton	215-723-5430
Mattie N. Dixon Community Cupboard		
	Ambler	215-628-3002
Manna on Main Street	North Penn	215-855-5454
Meals on Wheels (subsidized meals)		610-278-3522
Meals on Wheels (private pay)		
	Boyertown	610-367-6957
	Gladwyn	610-688-8170
	Pottstown	610-326-1610
	Ambler	215-619-8863
	Glenside	215-619-8863
	Souderton	215-723-8555
	Norristown	610-275-1960
	East Greenville	215-679-6550
New Life Church Food Cupboard	Glenside	215-576-0892
Norristown Hospitality Center		610-277-1321
Patrician Society of Central Norristown		610-272-6316
Share Food Program		215-223-2220
Women, Infants and Children (WIC)		
	Norristown	610-272-4042
	Abington	215-877-8006
	Lansdale	215-368-9826
	Pottstown	610-323-8160

Housing

If you are homeless or in imminent risk of becoming homeless, please contact the Your Way Home Call Center.

Visit www.211SEPA.org
Dial 2-1-1 or 866-964-7925
Text 898-211

Genesis Housing Corporation		610-275-4357
HUD Public Housing Info & Resource Center		800-955-2232
Montgomery County Housing Authority (MCHA)		
(Public Housing and Housing Voucher Program)		610-275-5720

Unsafe Living Conditions

Contact Your Municipality's Building & Code Enforcement Dept.
Norristown Building & Code Enforcement Dept. 610-270-0441
The Housing Equity Center of PA 866-540-FAIR
www.equalhousing.org 267-419-8918

The Pennsylvania Supreme Court has ensured that tenants have the right to a decent place to live. This guarantee to decent rental housing is called the **Implied Warranty of Habitability.**

Multiple Types of Resources

ACLAMO	Norristown	610-277-2570
	Pottstown	610-970-2134
Adventist Community Service CTR (food/clothing)		610-489-6671
Boyertown Area Multi-Service, Inc. (food, financial)		610-367-6957
CADCOM (food, financial.)		610-277-6363
Carson Valley Children's Aid		215-233-1960
Catholic Social Services		610-279-7372
Colonial Neighborhood Council (food, clothing)		610-828-6595
Cradles to Crayons		215-836-0958
		www.cradlestocrayons.org/philadelphia
Family Services of Montgomery County		
	Eagleville	610-630-2111
	Pottstown	610-326-1610
Keystone Opportunity CTR (food, housing, educ.)		215-723-5430
Mitzvah Circle Foundation		215-828-6647
(Diapers, clothing, personal care items, period supplies)		
Manna on Main Street (food, financial) - Lansdale		215-855-5454
Montgomery County Assistance Office		
	Norristown	610-278-3601
	Pottstown	800-641-3940
Norristown Hospitality Center		610-277-1321
Open Door Ministry	Royersford	610-948-4818
Phoenixville Area Community Services		610-933-1105
Pottstown Cluster (food, furniture, clothing)		610-970-5995
Salvation Army (food, housing)		
	Pottstown	610-326-1621
	Norristown	610-275-4183
The Open Link (food, education, financial)		215-679-4112
The Women's Center of Mont.Co. (DV, financial)		800-773-2424
VNA Personal Navigator Program		
Abington, Colmar, Norristown, Pottstown		800-591-8234
Women's Bridge Resource Center - Eagleville		610-761-1707
(housing, food, D.V., financial, employment)		
		www.womensbridgecenter.org

Visit <https://www.montcopa.org/carseatcheck> to schedule an appointment for a **FREE** car seat check by a certified car seat technician!

Immigration Legal Services

African Cultural Alliance of North America		215-729-8225
Catholic Charities	Allentown	610-435-1541
	Philadelphia	267-331-2490
Equal Access Legal Services		267-888-6703
Esperanza Immigration Legal Services		215-324-0746 ext.308
HIAS Pennsylvania		215-832-0900
Keystone Opportunity Center – Citizenship classes		267-663-1001
Nationalities Service Center		215-893-8400
Villanova University School of Law – Legal Clinic		610-519-6839

US Citizenship and Immigration Legal Services Website:
www.uscis.gov

Maternal/Child Health Home Visiting

In Montgomery County, families can benefit from home visiting programs targeted at improving maternal and child health.

Maternity Care Coalition	215-972-0700
Early Head Start	610-819-6200
Maternal and Child Health Consortium of Chester County	
Healthy Start - Parents as Teachers	610-344-5370
Montgomery County Nurse Home Visiting Program	610-278-6724
Nurse Family Partnership (Einstein)	484-622-ENFP (3637)
	Email: NFPp@einstein.edu
Pottstown Family Center Parents as Teachers	610-326-1610

Call 1-888-404-0620 or Email

MontcoHomeVisiting@montcopa.org to be connected to one of the free home visiting services that best matches your needs.

Pregnancy/Childbirth/Breastfeeding

Pregnancy/Baby Health Providers

A Baby's Breath	Collegeville	610-489-0083
24-Hour Call Line:	English	484-571-5540
	Spanish	267-275-4966

Text "BABY" (para español: "BEBE") to 511411 or download the Text4baby app to receive FREE personalized health information throughout pregnancy and up until your child's 1st birthday.

Abington-Jefferson Health Maternal Health Services	
Physician Referral	215-481-6334
Maternity Education Classes	215-481-6800
Expectant Parents Orientation	215-481-2110
Pregnancy Exercise	215-481-4360
Maternity & Parenting Info	215-481-6800
OB/GYN Clinic	215-481-6784
Prenatal Testing Center	215-481-2108
Fetal Diagnostic Center	215-481-4944
Bethany Christian Svs Pregnancy Testing/Support	215-376-6200

Breastfeeding Support

Abington Memorial Hospital OB/GYN Center (Abington, Horsham, Warrington)	215-481-6784
Breastfeeding Resource Center Abington	215-886-2433
	King of Prussia 484-582-6682
Bryn Mawr Hospital	484-337-3000
Einstein Women's Resource Center	484-362-6133
Early Head Start	Pottstown 610-819-6200
	Norristown 610-277-1505
Grand View Hospital Lactation Consultant	215-453-4594
Holy Redeemer Hospital and Medical Center	800-818-4747
La Leche League of Central Montgomery Co	610-666-0359
La Leche League HELPLINE	800-525-3243
Lankenau Medical Center Wynnewood	484-476-2000
Maternity Care Coalition	215-972-0700
Nursing Mothers Alliance	610-251-9405
Pottstown Hospital	610-327-7145
Visiting Nurses Association Community Services	610-272-3373
WIC Breastfeeding Warmline	855-427-5666

WIC Local Offices

Abington	215-887-8006
Norristown	610-272-4042
Pottstown	610-323-8160
Lansdale	215-368-9826

Childbirth Classes

Abington Memorial Hospital OB/GYN Center (Abington, Horsham, Warrington)	215-481-6784
Bryn Mawr Hospital	484-337-3000
Community Health & Dental Care (Pottstown)	888-215-9770
Einstein Women's Resource Center Plymouth Mtg	484-622-2226
Holy Redeemer Hospital and Medical Center	800-818-4747
Lankenau Medical Center Wynnewood	484-476-2000
Lifecycle WomanCare (formerly The Birth Center)	610-525-6086
Maternity Care Coalition	215-348-9770
Doylestown	
Grand View Hospital	
Lower Bucks	
Pottstown	
Pottstown Hospital	610-327-7145

Caregiver Resources

To obtain a birth certificate: <http://www.health.pa.gov/>
Philadelphia Public Office 1-844-228-3516 or 215-560-3054
To locate a Social Security office: 1-800-772-1213
Statewide Adoption Network 1-800-585-SWAN (7926)

Are you over the age of 55 and caring for a child 18 years or younger?

CALL: 610-278-3522 to learn about Montgomery County Office of Aging & Adult Services' Grandparent Program

Childcare

Early Learning Resource Center Region 17 610-278-3707

Administers the Child Care Works subsidized child care program to qualifying families in Montgomery County, assists families in locating and selecting high quality child care and manages the Keystone STARS quality rating improvement system for childcare providers in Montgomery County.

Print an application and supporting documentation: montcopa.org/elrc
Apply for subsidized child care online: compass.state.pa.us
Search for a child care provider: findchildcare.pa.gov

Pennsylvania Department of Human Services 800-346-2929
Child care certification, inspections & complaints 215-560-2541

The Pennsylvania Key (for parents and providers) pakeys.org

Early Head Start (birth to age 3)

Chester County Intermediate Unit (CCIU)	610-383-6800
Maternity Care Coalition	
	Pottstown 610-819-6200
	Norristown 610-277-1505

Pre-K Counts (ages 3 & 4)

Montgomery County Intermediate Unit	484-868-9550
Pottstown Early Action for Kindergarten Readiness	610-970-6655

Head Start (ages 3 to 5)

Montgomery County Intermediate Unit	484-868-9800
-------------------------------------	--------------

Child Support & Paternity

Bucks County Domestic Relations	215-340-8068
Montgomery County Domestic Relations	610-278-3646

Children with Special Needs

Early Intervention in PA Statewide CONNECT Line: 800-692-7288

Montgomery County Office of Early Intervention
 Assessment and Intake (children under 3) 610-277-7176
 Montgomery County Intermediate Unit 610-755-9400
 (Early Intervention services for children 3 years and older)

Pre-school Intervention Program Norristown 610-272-4110
 Quinn Developmental Services 215-654-7577
 Special Kids Network, Inc. 800-986-4550
 Speech Success Academy Willow Grove 267-818-4200
 The ARC Alliance Children's Services 610-265-4700
 Variety Club Camp & Developmental Center 610-584-4366
 (respite, socialization groups, camp)

Talk Support in Non-Emergencies

TEEN Talk Line:
 Call 886-825-5856 or Text 215-703-8411 or email:
 teentalkline@accessservices.org

Peer Support Talk Line (open daily 1:00pm to 9:00pm):
 Call 855-715-8255 or Text 267-225-7785

Mental Health Services

Community Behavioral Health Centers

Montgomery County Mobile Crisis Hotline

855-634-HOPE (4673)

Central Behavioral Health - Norristown 610-277-4600
 Central Behavioral Health - Abington (*Adults*) 267-818-2220
 Child and Family Focus - Abington Region 267-818-6190
 Creative Health Services - Pottstown 610-326-2767
 Lower Merion Counseling and Mobile Services 610-520-1510
 Merakey/NHS - Lansdale 215-368-2022
 Penn Foundation - Franconia/Salford Region 215-257-6551

Suicide Crisis and Prevention

ACCESS Services (Mobile Crisis Support) 855-634-4673
 National Suicide Prevention Helpline 800-273-8255
 Veterans Press 1 Para español: 888-628-9454
 National Crisis Text Line 741741
 National Trans Lifeline 877-565-8860
 Prevent Suicide PA 717-885-9161
 Suicide Prevention Taskforce Training Coordinator 610-278-1238
 The Trevor Lifeline (For LGBTQIA Youth) 866-488-7386
 Or Text "START" to: 678678

Support Groups

New Directions (depression/bipolar) 215-659-2366
 Hearing Voices 484-681-9432 x 203
 Wrap 484-681-9432 x 204

Veterans

Montgomery County Vet Center 215-823-5245
 Veterans Resource Center, Montco Comm College 215-619-7307

Victims of Crime

Lincoln Center Victims of Crime Act Program 610-277-3715

Drug and Alcohol Services

Case Management

Central Montgomery County (Gaudenzia) 610-279-4262
 Eastern Montgomery County (Gaudenzia-Dresher) 215-433-1634
 Northeastern Montgomery County 267-452-1913
 Western Montgomery County (Creative Health Svc) 610-327-1503

Preference given to pregnant users, veterans, overdose survivors, and injection drug users

Prevention/ Intervention

Aldersgate Youth Service Bureau Willow Grove 215-657-4545
 Carson Valley Women's Voices Program Norristown 610-279-2755
 Creative Health Services Outpatient 610-327-1503
 Northwestern Human Svcs (Now Merakey) 215-716-9001

Outpatient Services

Creative Health Services Outpatient 610-327-1503
 Gaudenzia-Dresher/ Willow Grove Outpatient 215-433-1634
 Gaudenzia Norristown Outpatient 610-279-4262
 Key Recovery Outpatient Ambler 215-542-4825
 Malvern Institute Outpatient Program Pottstown 610-647-0330

Autism Support

Montgomery County Office of Developmental Disabilities/Early Intervention 610-278-5666
 The Autism Society www.autism-society.org 800-3-AUTISM
 The Center for Autism 215-878-3400
 The PA Bureau of Autism Services 877-231-4244

Developmental Disabilities

The Arc of PA 877-337-1970
 Disability Rights PA Toll Free 800-692-7443
 TDD 877-375-7139
 Philadelphia 215-238-8070
 Montgomery County Office of Developmental Disabilities 610-278-5666
 National Down Syndrome Society
 Montgomery County Interest Group 610-754-1483
 Office of Vocational Rehabilitation (OVR) 484-250-4340
 Suburban Transnet Services 215-542-7433

Early Intervention (EI)

Montgomery County Early Intervention (for children ages birth to 3) 610-277-7176
 Montgomery County Intermediate Unit (for children ages 3 to 5) 610-755-9400

Advocacy

Mission Empower 814-825-0788

Assistive Technology (AT)

Bridging Apps bridgingapps.org
 Technology for Our Whole Lives <https://techowlpa.org>
 PA Assistive Technology Foundation 888-744-1938
 PA's Initiative on AT Lending Library 800-204-7428
 PA's Initiative on AT at Temple University 215-204-1356
 TTY: 215-204-1805
 Temple University Institute on Disabilities 215-204-1356

Support for Siblings

The Sibling Support Project <http://www.siblingsupport.org>
 Sibshop (ages 6-12) and Sibteen (ages 13-17)
 Pottstown – Creative Health Services 610-326-9250
 Kulpsville – Easterseals of Southeastern PA 215-368-7000

Additional Resources

Children/Adults with Attention Deficit/Hyperactivity Disorder (CHADD) 800-233-4050
 Easterseals of Southeastern PA Kulpsville 215-368-7000
 EdBeCo, Inc. 267-465-7515
 Exceptional Connections (Applied Behavior Analy) 267-495-8589
 Indian Creek Foundation Family Services 267-203-1500
 Montgomery County Intermediate Unit 610-755-9400
 PA Families, Inc. (Statewide Families Network) 866-947-4941
 Parent Education & Advocacy Leadership (PEAL) 866-950-1040
 PA Tourette Syndrome Association 800-990-3300
 Parents Exchange 610-962-0337

Penn Foundation Outpatient 215-257-9999
 RHD Rise Above Outpatient Program KOP 484-681-4040

Maternity Care Coalition MOMobile 610-713-0570
 Norristown Family Center 610-279-2755
 Pottstown Family Center 610-326-1610

Other

Alcoholics Anonymous – Find a Group - www.aasepia.org
 South Eastern Penn Intergroup Assoc. 215-923-7900
 Intergrupal Hispana de PA 215-226-3049
 Al-Anon 800-344-2666
 Council of SE PA Drug & Alcohol Helpline 800-221-6333
 Eagleville Hospital (Substance Use) 800-255-2019
 Harwood House – Male Only Halfway House 610-853-3440
 Libertae Halfway House &
 Family House Rehab (Women & Children) 215-639-8681
 Malvern Institute Inpatient Program - Willow Grove 610-647-0330
 Narcotics Anonymous 610-534-9510
 Nar-Anon 800-477-6291
 Norristown Recovery & Education Center 267-507-3525
 PA Division of D & A Program Licensure (DDAP) 717-783-8675
 Penn Foundation Rehab & Mobile 215-257-9999
 Pottstown Recovery & Education Center 267-507-3525
 PRO-ACT Hotline (Support for Families) 800-221-6333
 Resource for Human Development (RHD)
 Family House-Residential for Women & Children 610-278-0700
 Lower Merion Counseling and Mobile Services 610-520-1510
 Womanspace - homelessness addiction recovery 215-844-2400
 Valley Forge Medical Center (Substance use only) 610-539-8500

Colleges

Arcadia University 215-572-2900
 Bryn Mawr College 610-526-5000
 Cabrini University 610-902-8100
 Eastern University 610-341-5800
 Gwynedd Mercy University 215-646-7300
 Harcum College 610-525-4100
 Haverford College 610-896-1000
 Immaculata University 610-647-4400
 Manor College 215-855-2360
 Montgomery County Community College
 Norristown 215-641-6300
 Pottstown 610-718-1800
 Culinary Institute
 KEYS Program
 (TANF & SNAP eligible assistance) 215-643-6330
 Penn State University – Abington Campus 215-881-7300
 Rosemont College 610-527-0200
 Saint Joseph’s University 610-660-1000
 Temple University – Ambler Campus 267-468-8000
 Ursinus College 610-409-3000
 Villanova University 610-519-4500
 West Chester University 610-436-1000

Education

English as a Second Language

Abington Free Library - Adult Literacy Classes 215-885-5183
 ACLAMO Family Center 610-277-2570
 Keystone Opportunity Center Souderton 267-663-1001
 Lansdale
 Norristown
 Montgomery County Community College 215-619-7396
 Montgomery County Literacy Network 877-225-4484
 Montgomery County OIC Norristown 610-279-9700
 Won Community Center Glenside 215-884-8443
 YWCA Tri-County Pottstown 610-326-7323

Family Services

The Norristown Family Center of Carson Valley Children’s Aid and the Pottstown Family Center of Family Services strengthen and empower parents and children. All services are free.
Norristown 610-279-2755 • Pottstown 610-326-1610

High School Equivalency (GED & HiSET)

Montgomery County Community College 215-641-6300
 Keystone Opportunity Center Souderton 267-663-1001
 Literacy Council of Norristown (GED/ESL) 610-292-8515
 Montgomery County Literacy Network 877-225-4484
 Montgomery County OIC Norristown 610-279-9700
 PA Career Link Montgomery County 610-270-3429
 The Open Link 215-679-4112
 YWCA Tri-County Pottstown 610-326-7323

ACLAMO Norristown 610-277-2570
 Pottstown 610-970-2134
 Big Brothers Big Sisters 610-277-2200

Health Services – Insurance and Access

Determining Eligibility

VNA Personal Navigator Program
 Abington, Colmar, Norristown, Pottstown 800-591-8234
 PA Health Law Project Helpline: 800-274-3258
 (Determining eligibility for Medicaid, etc.) www.phlp.org

Connecting to Health Insurance

VNA Personal Navigator Program 800-591-8234
 PA Health Access Network (ACA Enrollment) 877-570-3642

Enrolling in Benefits

VNA Personal Navigator Program 800-591-8234
 COMPASS www.compass.state.pa.us 800-692-7462
 Hearing Impaired TTX/TTD 800-451-5886
 Online application to apply for many health & human service benefits, including: Medical Assistance, CHIP/Adult Basic; Cash Assistance, Child Care Works Program (CCIS); Food Stamps; Energy Assistance (LIHEAP); School Meals; SelectPlan for Women; Home and Community-Based Services.
 CHIP Press prompt #2; then Prompt #1 800-986-5437
 Medicare 800-633-4227
 Montgomery County Assistance Office 877-398-5571
 Norristown 610-270-3500
 Norristown LIHEAP 610-272-1752
 Pottstown 610-327-4280
 Pottstown LIHEAP 610-272-1752
 Social Security 800-772-1213

Job Training/Career Services

Pennsylvania Career Link in Montgomery County 610-270-3429
 or cwds.pa.gov
 CADCOM’s Fatherhood Empowerment Center 610-277-6363
 Developmental Enterprises Corporation (DEC) 610-277-3122
 Goodwill Employment Services Keystone Area 717-394-0647
 Hedwig House 610-787-1982
 Job Corps 800-733-5627
 Keystone Opportunity Center 267-663-1001
 Lakeside Mobile Support Program 215-518-9312
 Montgomery County Assistance Office
 Norristown 610-270-3500
 Pottstown 610-327-4280
 Montgomery County EARN Center 610-292-5026
 (Employment Advancement & Retention Network)
 Montgomery County OIC 610-279-9700
 (Opportunities Industrialization Center)
 National Alliance on Mental Illness (NAMI) 215-361-7784
 Norristown Hospitality Center 610-277-1321
 Pottstown Public Library 610-970-6551

Parenting Education

Maternity Care Coalition 215-972-0700

Social Security TTY 800-325-0778

Prescription Assistance

Partnership for Prescription Assistance 888-477-2669
www.pparx.org

Health Services – Providers

Montgomery County Office of Public Health

Health Centers

All County Health Centers provide the following services:

Immunization Clinics
HIV Testing and Counseling
STD Screening and Treatment

Pottstown Public Health Center 610-970-5040
Norristown Public Health Center 610-278-5145
Willow Grove Public Health Center 215-784-5415

For TB Screening and Treatment call: 610-970-5040

Child Health Care

Abington Health Children’s Clinic Lansdale 1-800-533-3669
Abington Health- Maternal Child Home Health 215-481-5800
Bryn Mawr Family Practice 610-325-1390
CHOP Newborn Care Holy Redeemer Hospital 215-938-2903
CHOP Primary Care

Indian Valley 215-723-7177
Flourtown 215-836-1700
Norristown 610-272-4550
Chalfont 215-822-7700
Abington Memorial 215-481-4320

CHOP Specialty Care

Exton 610-594-9008
King of Prussia 610-337-3232
Abington 215-885-2790

Community Health and Dental Care Pottstown 800-589-6212
Children’s Health Center of VNA Abington 215-572-7880
Montgomery Family Practice Norristown 484-622-7510
North Hills Health Center 215-572-0302
Pottstown Hospital-Tower Health

Tower Health at Home (home healthcare) 855-843-8627
Coventry Pediatrics 610-326-8660

Trappe Pediatric Care- Einstein 484-622-6340
VNA Health Norristown 610-272-3373
Children’s Clinic Press “2”
Navigates Press “3”

Dental

Community Health and Dental Care Pottstown 800-589-6212
Community Medical and Dental Collegeville 610-489-1313
Norristown Regional Health Center 610-278-7787

Immunizations

Abington Health Maternal Child Home Health 215-481-5800
Community Health & Dental Care Pottstown 610-323-9460
Children’s Health Center of VNA Abington 215-572-7880
Montgomery County Office of Public Health

Norristown 610-278-5145
Pottstown 610-970-5040
Willow Grove 215-784-5415

Montgomery Family Practice Norristown 484-622-7510
Norristown Regional Health Center 610-278-7787
North Hills Health Center Glenside 215-572-0302
The Clinic (under and uninsured) Phoenixville 610-935-1134

Pregnancy Testing

A Baby’s Breath Collegeville 610-489-0083
24-Hour Call Line: English 484-571-5540
Spanish 267-275-4966
Birthright of Pottstown 610-327-2626

Catholic Social Services 610-279-7372
Choice One 800-497-8378
Genesis Pregnancy Center 610-970-8089
Genuardi Family Maternal Health Norristown 484-622-7300
North Care Women’s Clinic Lansdale 215-855-2424
Text: 215-720-1579
Planned Parenthood Norristown 610-279-6095
Pottstown 610-326-8080
All 800-230-7526

Obstetrics/Gynecological

Abington Memorial OB/GYBN Center 215-481-6784
Bryn Mawr Hospital 484-337-3000
Genuardi Family Maternal Health Norristown 484-622-7300
Lankenau Medical Center Wynnewood 484-476-2000
Lifecycle WomanCare (formerly The Birth Center) 610-525-6086

North Hills Health Center Glenside 215-572-0302
Planned Parenthood Norristown 610-279-6095
Pottstown 610-326-8080
All 800-230-7526
Pottstown Hospital Maternity Services 610-327-7142
The Clinic (under and uninsured) Phoenixville 610-935-1134

HIV/STDs/AIDS Services

AIDS Fact Line 800-662-6080
Action Wellness Philadelphia 215-981-0088
CDC National STD Hotline English/Spanish 800-232-4636
Choice One 800-497-8378
Find an STD/HIV Testing Site <https://gettested.cdc.gov/>
Mazzoni Center (LGTBQ) Philadelphia 215-563-0658

Montgomery County Office of Public Health
Pottstown Public Health Center 610-970-5040
Norristown Public Health Center 610-278-5117
Willow Grove Public Health Center 215-784-5415
Montgomery Co. HIV/STD Program 215-278-5145
North Care Women’s Clinic Lansdale 215-855-2424
Text: 215-720-1579
Norristown Regional Health Center 610-278-7787
Perinatal HIV/AIDS Hotline 888-448-8765
Philadelphia FIGHT (Jonathan Lax Center, Etc.) 215-790-1788
Planned Parenthood Norristown 610-279-6095
Pottstown 610-326-8080
All 800-230-7526
Project Hope Case Management Family Services (se habla español) 610-630-2111

Teen Pregnancy

Abington Jefferson Hospital 1-800-533-3669
Birthright of Pottstown 610-327-2626
Carson Valley Norristown Family Center 610-279-2755
Child, Home and Community (CHC) 215-348-9770
Maternity Care Coalition
Childbirth & Newborn Care Classes 215-348-9770
Montgomery County Teen Parent Task Force (link) [Facebook](#)
Montgomery County Office of Public Health
MCH Nurse Home Visiting 610-278-6763
Morningstar Ministries (Pregnant Teen Housing) 215-723-8103
North Care Pregnancy Resource Clinic (24 hrs/day) 215-855-2424
Text: 215-720-1579
Nurse Family Partnership 484-622-3637
Pottstown Family Center 610-326-1610
SafeTeens 866-SAFE-TEENS
Or text “SAFE” to 57890

Do you need a free smoke detector?
Call the Norristown Fire Department FREE Smoke
Detector Hotline:
610-270-2878

Hospitals

Abington Health/Lansdale Hospital 215-368-2100
Abington Jefferson Hospital 800-533-3669

Bryn Mawr Hospital	484-337-3000
Chestnut Hill Hospital	215-248-8200
Children's Hospital of Philadelphia	800-879-2467
Einstein Medical Center Montgomery	484-622-1000
Einstein Medical Center Elkins Park	215-663-6000
Grand View Hospital	215-453-4000
Holy Redeemer Hospital	800-818-4747
Lankenau Medical Center	484-476-2000
Mainline Health	866-225-5654
Montgomery County Emergency Services, Inc.	
Crisis Intervention	610-279-6100
Norristown State Hospital (Psychiatric)	
Referrals	610-278-3642
Social Work	610-313-1000
Paoli Hospital	484-565-1000
Phoenixville Hospital/Tower Health	610-983-1000
Pottstown Hospital/Tower Health	610-327-7000
Suburban Community Hospital	610-278-2000
St. Christopher's Children's Hospital	855-393-3780

Support Groups

Crisis

Crisis TEXT LINE	Text "HOME" to:	741741
NOVA (Network of Victims Assistance)		800-675-6900

Domestic Violence

Laurel House Individual & Support Group Counseling	
East Norriton	610-405-7080
North Wales	610-983-8722
Nicole's Place	
Huntingdon Valley	215-402-7804
Bryn Mawr	610-405-7080
Pottstown	215-915-5125
Victim Services of Montgomery County (Hotline)	888-521-0983
The Women's Center of Montgomery County	800-773-2424

Drug & Alcohol

Alcoholics Anonymous	215-923-7900
Al-Anon Family Group Headquarters	800-344-2666
Narcotics Anonymous	844-624-3575

Father Friendly

CADCOM Fatherhood Empowerment Center	610-277-6363
Carson Valley Children's Aid	
Fatherhood Meetings	610-996-8945
CHCs School-based ELECT Program	
Fatherhood program for teenage fathers	215-348-9770
Dad Lab - Abington Health Center (Willow Grove)	215-481-3233
Fathers Matter Initiative	fathersmatter2.org
I CAN DADS Coaching	icandads.com
More resources:	
Better Dads - betterdads.net	
National Center for Fathering - fathers.com	
National Fatherhood Initiative - fatherhood.org	

Lead poisoning is 100% preventable.

Talk to your child's doctor about getting a blood lead test. Pediatricians recommend that children get a blood lead test at around the age of one, and again around the age of two. Children should be tested at their doctor's office or a laboratory. Medicaid, CHIP and private insurance covers blood lead testing for children.

You can do a lot to reduce your child's risk of being lead poisoned:

- Keep children away from peeling paint.
- "Wet wipe" hard surfaces like floors and windowsills at least once a week.
- Foods high in calcium, iron, and Vitamin C can help keep your child healthy and lead free.
- Use caution when using children's toys and jewelry made in other countries. These items may contain lead.

Parents, guardians and health care professionals can contact the Office of Public Health for more information:

Norristown area (610) 278-5145
Pottstown area (610) 970-5040
Willow Grove area (215) 784-5415

Grief Support

Bereavement Support – Abington Hospital	215-441-6842
Compassionate Friends (loss of child)	
Abington Chapter	267-265-6744
Valley Forge Chapter (KOP)	484-919-0820
Grief Recovery after a Substance Passing (GRASP)	215-884-3916
Perinatal Loss Support, Abington Hospital	215-481-4814
Safe Harbor, Abington Hospital	
(grieving children and teens)	215-481-5983
Unite Inc. Grief Support for Infant Loss	888-488-6483

LGBTQ

LGBT Peer Counseling- William Way	215-732-8255
Mazzoni Center	Philadelphia 215-563-0658

Mental Health

Montgomery County Peer Support Talk Line	855-715-8255
National Alliance of Mental Health (NAMI) Montgomery County	215-361-7784
Survivors of Suicide Support Group	215-545-2242

Parenting

Center for Parenting Education Abington	
https://centerforparentingeducation.org/	
Centering Parenting Program & New Parent Classes	800-346-7834
Norristown Catholic Social Services	
English/Spanish Parenting Support	610-279-7372
Norristown Hospitality Center	610-277-1321
Pottstown Family Center	610-326-1610
Teen Parent Support Group (CHC)	215-348-9770
Young Lives - Support for Teen Parents	484-947-1429

Pregnancy/Childbirth

A Baby's Breath	Collegeville	610-489-0083
24-Hour Call Line:	English	484-571-5540
	Spanish	267-275-4966
Birthright of Pottstown		610-327-2626
Genuardi Family Maternal Health Center		
Centering Pregnancy Group		484-622-7300
Norristown Catholic Social Services		
English/Spanish Pregnancy Support		610-279-7372
Nursing Mothers Alliance Helpline		610-251-9405
Pottstown Family Center		610-326-1610
The Postpartum Stress Center		610-525-7527
The Center for Postpartum Depression Phila.		215-247-2114

Other

Crohn's/Colitis Support	Lansdale Hospital	215-343-0548
Epilepsy Foundation of Eastern Pennsylvania		215-629-5003
Multiple Sclerosis Association-		215-271-1500
	Greater Delaware Valley	
PA Mentor		215-612-8200

Taxes

Earned Income Tax Credit (EITC)	Call IRS	800-829-1040
		Or www.irs.gov/eitc
PA Tax Forgiveness	PA Department of Revenue	717-787-8201
		Or https://www.revenue.pa.gov

Transportation

American Cancer Society Road to Recovery		800-277-2345
Mobility Hotline		866-507-4857
Boyertown Area Multi-Service (Medical Transport)		610-367-6957
Pottstown Area Rapid Transit (PART)		610-326-5413
Penn DOT Customer Service Call Center		800-932-4600
SEPTA CCT Connect (disabilities & seniors)		215-580-7145
The Open Link (Pennsburg Area Medical Transport)		215-679-4112
Transnet Suburban	www.suburbantransit.org	215-542-7433
Persons with Disabilities Transportation Program		
Medical Assistance Program		
School/Camp Transportation (set up by school/camp)		
Shared Ride Program 65+		
Shuttle Service for collages/corporate centers		



LOCATIONS

Norristown
1430 DeKalb Street
Norristown, PA 19404
610-278-5145

Pottstown
364 King Street
Pottstown, PA 19464
610-970-5040

Willow Grove
Eastern Courthouse Annex
102 York Road, Suite 401
215-784-5415

CHILDREN AND ADULT HEALTH

Vaccinations for children and adults, including flu, for those with no insurance covering vaccinations and for Vaccines for Children (VFC) eligible clients. Tuberculosis Testing and Treatment – Sexually Transmitted Disease Screening and Treatment - HIV/AIDS Testing and Counseling – Healthy Homes Program.

FAMILY SUPPORT HOME VISITING PROGRAM

The Maternal-Child Health Home Visiting Program is free for pregnant women, new mothers, new fathers, and their babies. A public health nurse will visit the family in the home, help with health care needs and discuss how mom, dad and baby are doing. The public health nurse can assist parents and children with a variety of needs including, but not limited to infant care, parenting tips, breastfeeding tips, home safety tips, smoking cessation, family planning, immunizations, education, and more.

HEALTH PROMOTION AND EDUCATION

Montgomery County Office of Public Health offers a variety of programs that are FREE for worksites, schools, senior centers and Montgomery County residents. Staff can host a display table at your community's health fair to distribute literature and answer questions. Program topics include:

Chronic Disease • Communicable Disease • Environmental Health • Healthy Lifestyles • Immunizations • Injury Prevention • Nutrition • Opiate Epidemic • Physical Activity

To request a health educator program, call (610) 278-5117 or fill out the on-line request form at:

<https://www.montcopa.org/EducationalPrograms>

SAFE SLEEP TRAINING AND CRIBS FOR KIDS

Agencies may refer women who are pregnant and in need of a safe sleep space for their baby by calling (484) 622-ENFP (3637) American Heart Association Infant CPR (non-certified) training is also available for groups.

Toll-Free Helplines for Pennsylvania Families

1-800-932-0313	Child Abuse 24-hour Helpline (Childline)
1-800-4-A-CHILD (1-800-422-4453)	24-hour national crisis intervention hotline to offer support, information and referrals for preventing child abuse
1-800-986-BABY(2229)	Healthy Baby Line for information about finding a doctor, immunizations and tests for your baby, and resources to support breastfeeding
1-855-4-A-PARENT (1-855-427-2736)	24-hour National Parent Helpline to provide emotional support to parents
866-243-BABY(2229)	24-hour crying baby helpline
1-866-626-6847 or text 855-999-3525	MotherToBaby Hotline to talk to an expert about information on the safety of medications and other exposures during pregnancy and while breastfeeding
1-800-986-4550	Special Kids Network - Information on services available for children with special health care needs and disabilities
1-800-692-7288	Early Intervention in PA Statewide CONNECT Line for Birth to Age Five – to provide resources and information if you have concerns about your child’s development
1-800-753-8827	PA LINK to Aging and Disability Resource Center
1-855-634-HOPE (4673)	Montgomery County’s Crisis Response, available 24/7.
1-800-642-3150	Laurel House Women’s Shelter 24-hour Helpline
1-800-WIC-WINS	Information on obtaining supplemental foods, breast feeding and nutrition education
1-800-424-LEAD(5323)	The Lead Information Helpline provides information for parents, homeowners, contractors and healthcare professionals.
1-866-412-4755	The Head Injury Information Helpline
1-800-QUIT-NOW (1-800-784-8669)	24-hour Tobacco Quit line for Pennsylvania residents
1-800-662-HELP (4357)	SAMHSA’s National helpline for persons who need assistance finding a treatment provider or funding for mental and/or substance use disorders (in English and Spanish)
Dial 2-1-1 or 866-964-7925 or Text 898-211	Your Way Home Call Center - for persons who are homeless or are in imminent risk of becoming homeless
1-800-232-4636	CDC National STD Hotline English/Spanish

Thank you to Sarah Evenosky and Emma DeWyse, Arcadia University, who have updated the 2019 Parent and Infant Resource Guide.

Emma and Sarah are graduate students in the dual degree Master of Public Health (MPH) and Master of Medical Science (MMS) program at Arcadia University. After completing the MPH program in May 2019, they will begin their MMS degree and training to become Physician Assistants. They hope to apply the knowledge and experience they gained through the MPH program and their internship with the Office of Public Health in their future careers as clinical healthcare professionals. Both Emma and Sarah have interests in maternal and child health issues and hope to pursue work as licensed PAs in the field of pediatrics.

Montgomery County Oral Health Task Force

The task force is dedicated to improving access to oral health services.

Everyone should have a dental home. Regular dental care is essential to improving and maintaining both your oral and physical health.

Please be sure that you are talking with the dentist about your fluoride needs, particularly for children. There are various sources of fluoride and it is important to know that everyone is getting the optimal amount.

Use this guide to find a dental home and please comply with all the recommendations of your dentist and dental hygienist to ensure your oral health.



For additional information:

American Academy of Pediatric Dentistry
www.aapd.org

American Association of Public Health Dentistry
www.aaphd.org

American Dental Association
www.ada.org

American Public Health Association
www.apha.org

Centers for Disease Control and Prevention
www.cdc.gov

Montgomery Bucks Dental Society
www.mbds.org

Montgomery County Health Department
www.health.montcopa.org

National Foundation of Dentistry
for the Handicapped
www.nfdh.org

National Institutes of Health
www.nih.gov

PA Dental Association
www.padental.org

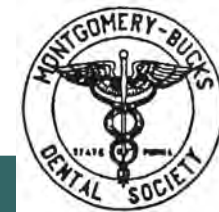
PA Department of Health
www.health.state.pa.us

**For additional copies of this guide, please contact
the Montgomery County Health Department at
610-278-5117.**

Montgomery County Dental Resource Guide



**Funded by the
Montgomery~Bucks
Dental Society
www.mbds.org**



CLINICS AND LOW-COST DENTAL PROVIDERS

Many private practice dental professionals provide services at reduced or no cost.

This is a listing of providers who supplement that effort to meet the oral health needs of our community.

Community Health and Dental Care

11 Robinson Street, Suite 100

Pottstown, PA 19464

Phone: 610-326-7405

-Private and public insurance

-Sliding fee scale for uninsured

Community Medical and Dental

309 Gravel Pike

Rahns, PA 19426

Phone: 610-489-1313

-Children & adults

-Medical Assistance, reduced fee

Greater North Penn Dental

Initiative at North Penn VNA

North Penn VNA

51 Medical Campus Drive

Lansdale, PA 19446

Phone: 1-877 GONPSMILES

(1-877-466-7764)

-Children & adults

-Medical Assistance, sliding fee scale

Harcum College

Cohen Dental Center

750 Montgomery Avenue

Bryn Mawr, PA 19010

Phone: 610-526-6015

-Preventive care only, children & adults

-Low cost clinic

HealthLink Medical Center

1775 Street Road

Southampton, PA 18996

Phone: 215-364-4247

-Working adults

-No-cost clinic, based on income level

Manor College

700 Fox Chase Road

Jenkintown, PA 19046

Phone: 215-887-7617

-Children & adults

-Low cost clinic

Montgomery County

Community College

Dental Hygiene Clinic

211 Science Center

340 DeKalb Pike

Blue Bell, PA 19422

Phone: 215-641-6483

-Preventive care only, children & adults

-Low cost clinic

Phoenixville Health Care Access

723 Wheatland Street

Suite 2C

Phoenixville, PA 19460

Phone: 610-935-3165

-Uninsured adults and children

-Must live in service area

Prime Time Dental

1548 DeKalb Street

Norristown, PA 19401

Phone: 610-277-7645

-Children & Adults

-Medical Assistance, other insurances

Get on the road and on your way, without the hassle of driving.

Thanks to Pennsylvania State Lottery proceeds, adults age 65 and older have an economical, safe, efficient, curb-to-curb transportation option in Montgomery County. With one call at least one day before transportation is needed, you can arrange to share a discounted fare ride with others in a sedan, van or minibus within multiple service areas in Montgomery County. Simply pay as you ride. Fares range up to \$7.50, depending on distance.

This reduced fare service is available once you register yourself or a family member. Receive your personalized ID card by completing the form in this brochure or by calling 215-542-RIDE.

**Your ride to
the grocery store, pharmacy,
hairdresser, doctor, or work.
Wherever life takes you –
Shared Ride can get you there.**

For more information and additional registration forms visit our website at www.suburbantransit.org or call 215-542-RIDE (7433) to speak to a representative.

“Your drivers are excellent. They are very concerned for my safety, courteous and thoughtful. I appreciate what you are offering seniors. Very Thankful, Thelma”



Union Meeting Corporate Center
980 Harvest Drive, Suite 100
Blue Bell, PA 19422-1955



**Enroll Free With No Obligation
No Income Eligibility Required**

**Call 215-542-RIDE (7433)
www.suburbantransit.org**



Are you or a family member
65 or older?

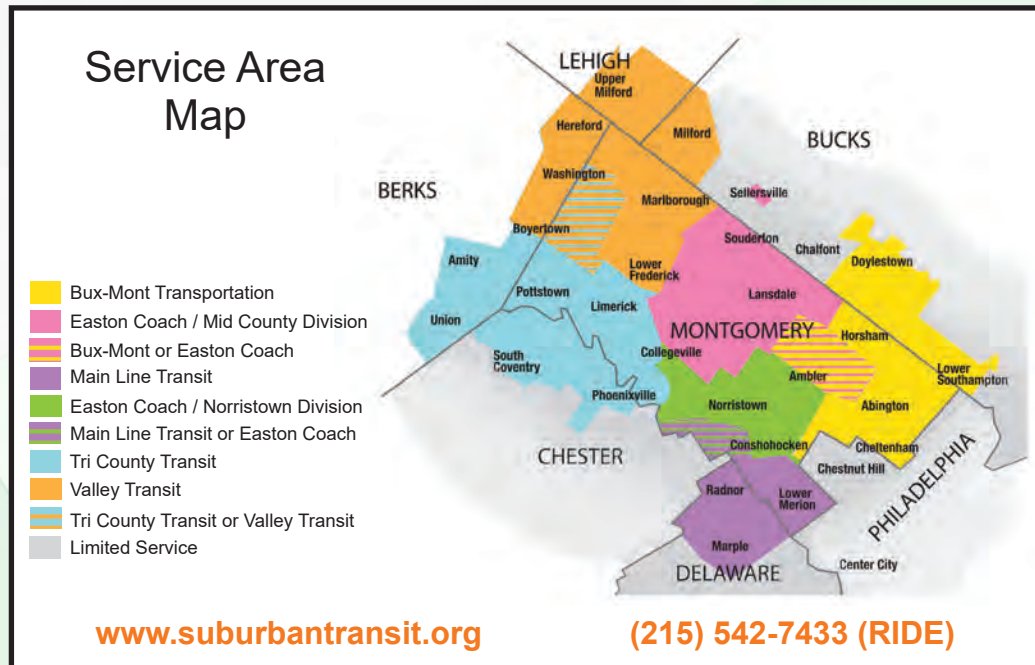
**215-542-RIDE (7433)
www.suburbantransit.org**

What is the Shared Ride Program?

The Shared Ride Program is a reduced fare transportation program for residents of Montgomery County who are age 65 or older. Rides are provided in sedans, vans or minibuses operated by local transportation companies. You may request pick-up and drop-off at locations of your choice. Reduced fares are available to riders who are willing to share their trip with other passengers. Persons 65 years of age or older are entitled to receive these trips and pay a significantly discounted fare. **Funds from the Pennsylvania State Lottery pay 85% of the fare through a grant from the Pennsylvania Department of Transportation.** For coverage areas, please see the map below.

What if I am under 65?

There is also a more limited program available for persons 60-64. You may receive eight one-way local trips per month at a discount. For more information, call 215-542-RIDE (7433).



How do I arrange for my trips?

Call one of the telephone numbers listed on the back of your ID card at least one day or up to 2 weeks in advance. Next day service is available if reservations are made before 3:30 p.m. the prior day. Shared Ride service may be limited to specific days and times.

Please allow plenty of time. The vehicle is allowed to come for you 15 minutes earlier or later than your requested pick up time.

As an option, TransNet can call you the day before and/or day of your trip. To opt into this feature, check the appropriate box(es) on the registration form.

How do I pay for my trip?

Remember to bring your rider ID card and a second form of identification with you when you ride. The driver will ask to see it when you get into the vehicle. Payment of the fare is due when you board the vehicle. Exact change is required.

Is passenger assistance available?

Basic service is curb-to-curb. Door-to-door service may be provided if necessary and it is requested in advance.

Special provisions can be made for persons needing a wheelchair or an escort. Please check the appropriate space.

Note: If an escort is checked off, you will be required to travel with your own personal escort each time you ride.



How do I register for the program?

Please clearly print your information on the form below. Mail this completed form, along with **proof of age** to:

Suburban Transit Network, Inc.
 Union Meeting Corporate Center
 980 Harvest Drive, Suite 100
 Blue Bell, PA 19422-1955

Acceptable forms of ID include a copy of a birth or baptismal certificate, driver's license or other government issued ID. *We cannot accept your Medicare Card as proof of age.*

You will receive a personalized rider ID card by mail. It must be presented to the driver each time you ride.



(215) 542-RIDE (7433) Fax: 215-542-8877
 e-mail: ride@suburbantransit.org
www.suburbantransit.org

NAME _____ FIRST _____ M.I. _____ LAST _____

ADDRESS _____

TOWN _____ ZIP CODE _____

PHONE # _____ EMAIL: _____

SSN# (LAST 4 DIGITS ONLY) _____ D.O.B. _____

I WILL NEED TO TRAVEL: With an Escort In a Wheelchair

To receive a trip reminder call, check box(es) below:

Day Before Same Day Opt Out of Feature

Signature _____ Date _____